

Date	Prepared by	Approved by	Document nos	Revision
6 May 2019	Ray Ling	Patrick Yeo	MS-MBA-3-H4-IM-001	0

## INSTRUCTION MANUAL MS-MBA-3-H4

### TABLE OF CONTENTS:

#### 1.00 BEAMS & CONNECTORS:

- 1.10 Resultant Beam Layout-Plan View
- 1.20 HB Connector
- 1.30 Connector Layout
- 1.40 Connector Ports Table

#### 2.00 PATTERN DIAGRAM

- 2.10 High Band

#### 3.00 MANUAL TILT ADJUSTMENT

#### 4.00 BRACKET, BOLT & NUTS REQUIREMENT

- 4.10 Bolts & Nuts
- 4.20 Bracket
- 4.30 Installation Sample (MBA Model's mostly identical installation)

#### 5.00 TOOLS

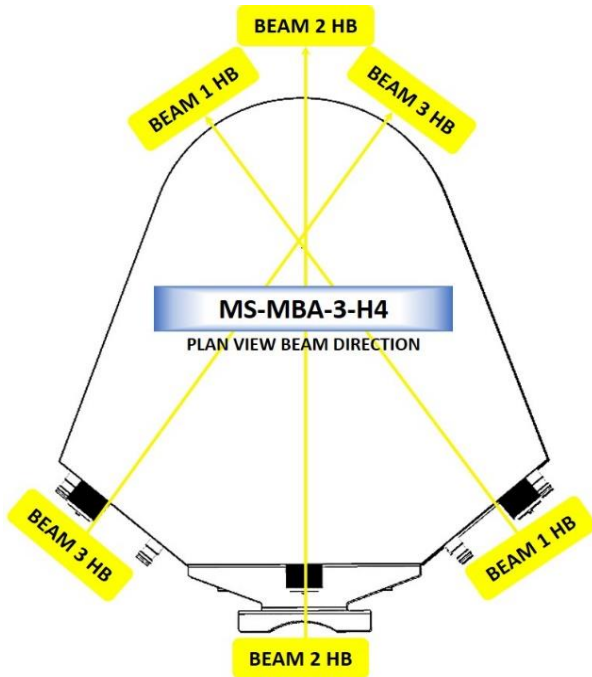
- 5.10 Adjustable Spanner
- 5.20 M12 Spanner

#### Revision History:

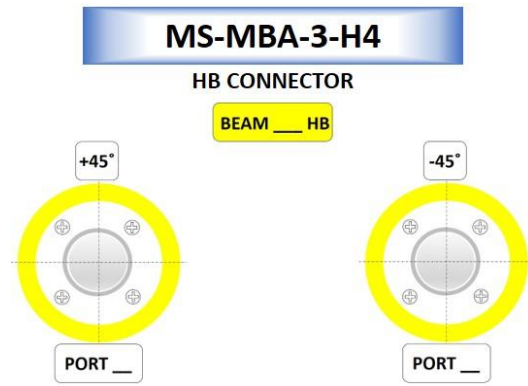
Date	Description	Revised by	Revision nos.

## 1.00 BEAMS & CONNECTORS:

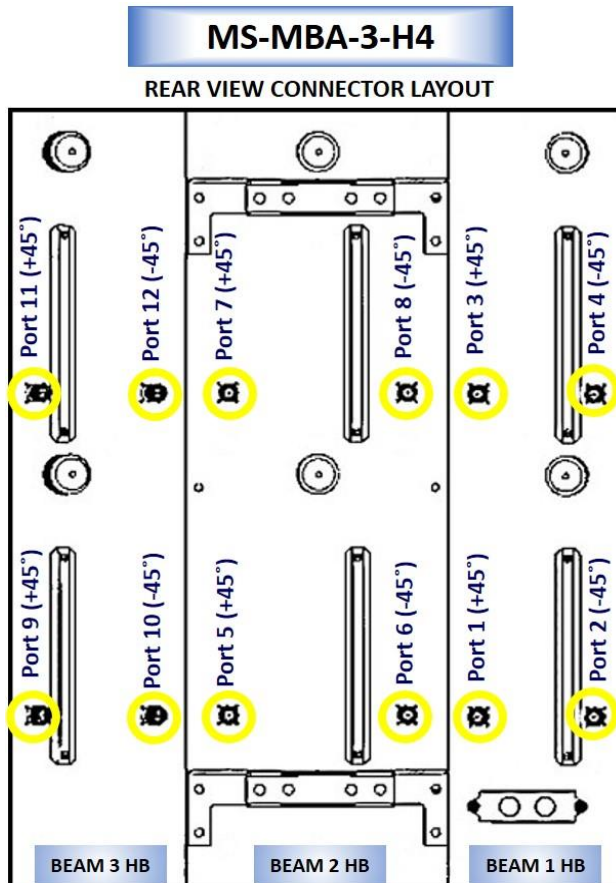
### 1.10 Resultant Beam Layout-Plan View



### 1.20 HB Connector



### 1.30 Connector Layout

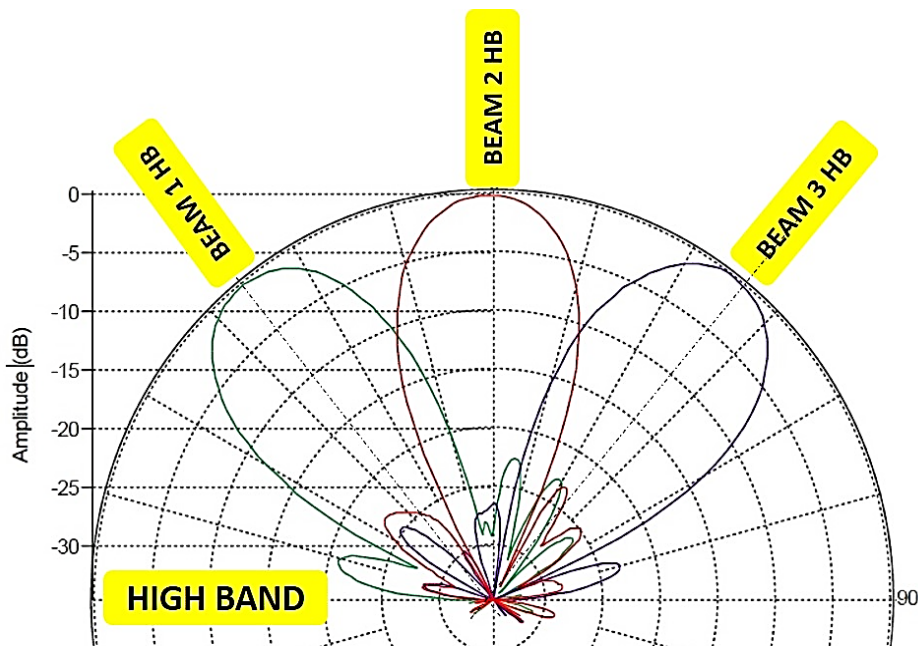


### 1.40 Connector Ports Table

MS-MBA-3-H4 Connector Table					
BEAM 3 HB		BEAM 2 HB		BEAM 1 HB	
Port 11 (+45°)	Port 12 (-45°)	Port 7 (+45°)	Port 8 (-45°)	Port 3 (+45°)	Port 4 (-45°)
Port 9 (+45°)	Port 10 (-45°)	Port 5 (+45°)	Port 6 (-45°)	Port 1 (+45°)	Port 2 (-45°)

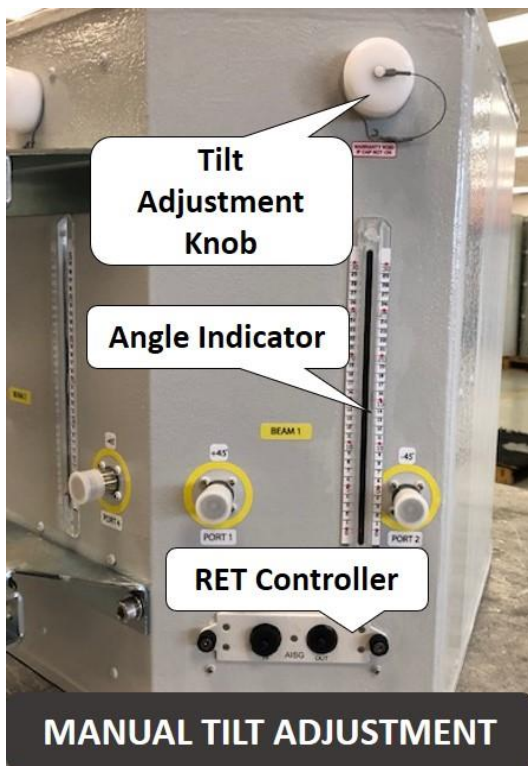
## 2.00 PATTERN DIAGRAM

### 2.10 High Band



## 3.00 MANUAL TILT ADJUSTMENT

1	The MBA antenna come in RET mode as default, but if needed can also be manually adjusted. To do so, please unscrew the waterproof cap behind the element whose tilt is to be adjusted.
2	By Default the knob is on engaged mode, pull out the handle for manual tilt adjustment, turn the handle to change the tilt.
3	When done, push the handle back in, screw the waterproof cap back to the position.



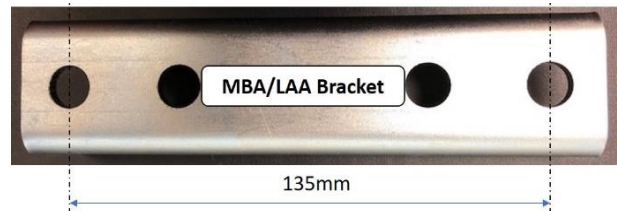
#### 4.00 BRACKET, BOLT & NUTS REQUIREMENT

nos	Model Apply	Bracket Qty (pc)	Bolt Size/Qty	Nuts Size/ Qty
1	MBA-2, MBA-8, MBA-3-H4, MBA-3.2-H4-L4, MBA-2-L2, 6SH-LAA	2	M12 x 160mm/4pcs	M12/8pcs

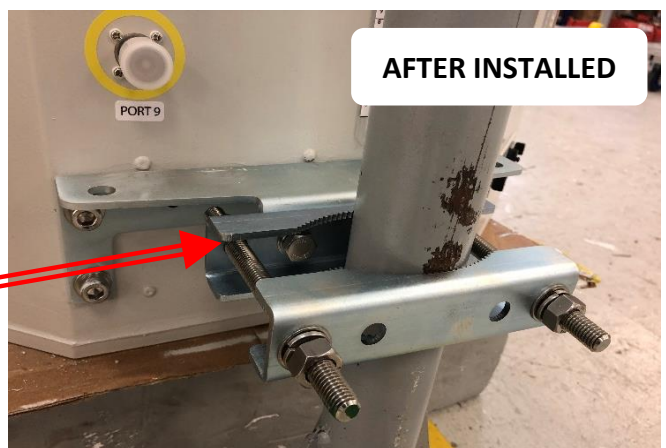
#### 4.10 Bolts & Nuts



#### 4.20 Bracket



#### 4.30 Installation Sample (MBA Model's mostly identical installation)



#### 5.00 TOOLS

#### 5.10 Adjustable Spanner

#### 5.20 M12 Spanner

