

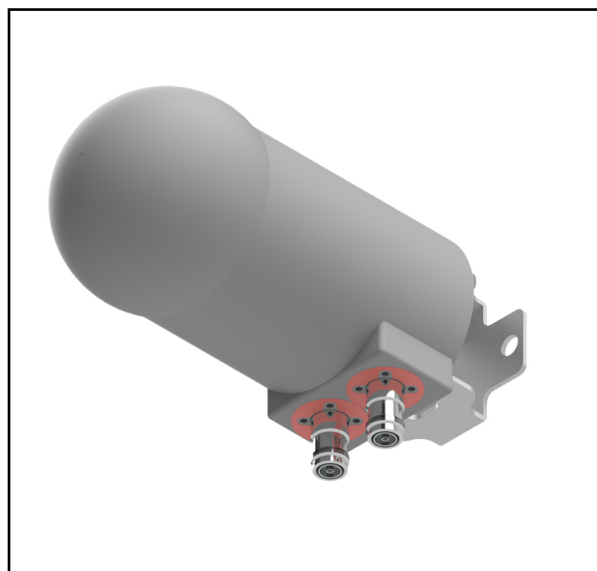
## MS-SB23-LAA

**Lens Technology Enabled™ Base-Station Antenna perfect for stadium applications , utilizes a patented spherical lens design with 1 isolated LAA-frequency (5000-6000MHz) cross-polarized beam. Beam has 2 cross-polarized ports for supporting 2X2 MIMO and low side-lobe levels.**

### Wind Load

### Antenna MS-SB23-LAA

<b>Antenna Model Number</b>
MS-SB23-LAA
<b>Velocity [km/h]</b>
150
<b>Dimensions: H x W x D [mm]</b>
120 x 120 x 280



### Results

	<b>Frontal</b>	<b>Lateral</b>
Wind Load [N/lbf]	3 / 0.67	29.5 / 6.63