

MATSING[®]

LENS TECHNOLOGY ENABLED

MS MBA Series antenna's
(Unpacking instruction)



Table of Contents

1.00 Multi beam antenna's (MBA) product overview

- 1.10 MBA-7 series models
- 1.20 MBA-6 series models
- 1.30 MBA-4 series models
- 1.40 MBA-3 series models
- 1.50 MBA-2 series models
- 1.60 MBA-1 series models

2.00 Wooden crate unpacking tools and steps

- 2.10 Unpacking tools
- 2.20 Large size crate
- 2.30 Medium and small size crate

3.00 Wooden crate unpacking and caution label

- 3.10 "L" size crate unpacking
- 3.20 "M" and "S" size crate unpacking
- 3.30 Safe handling and transporting
 - 3.31 Safe handling
 - 3.32 Safe lifting
 - 3.33 Safe transporting

Revision History:

<u>Date</u>	<u>Description</u>	<u>Rev By</u>	<u>Check By</u>	<u>Rev no</u>
29-May-2020	Initial Release	RL	Pavel	0
19-Nov-2024	Update new model	RL	Patrick	1

1.00 Multi beam antenna's (MBA) product overview

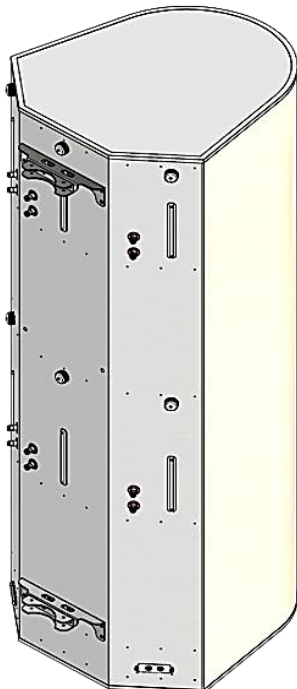
1.10 MBA-7 series models

no.	Model	Dimensions (cm)		
		Height	Width	Depth
1	MS-MBA-7-C2	63.2	61.9	72.6
2	MS-MBA-7-F2	63.2	61.9	72.6



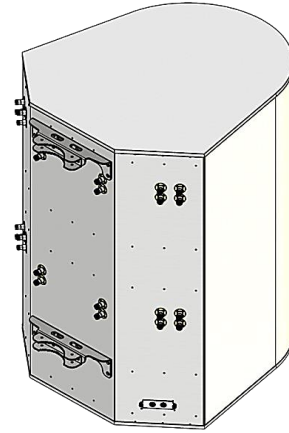
1.40 MBA-3 series models

no.	Model	Dimensions (cm)		
		Height	Width	Depth
1	MS-MBA-3.3.2-C2-H2-L2-1	139.2	61.9	72.3
2	MS-MBA-3.3.2-C2-H2-L2	139.2	61.9	72.3
3	MS-MBA-3.3.2-F2-H2-L2	139.2	61.9	72.3
4	MS-MBA-3.3-C4A3-H4A2-1	210.9	61.8	69.0
5	MS-MBA-3.3-C4A3-H4A2	210.9	61.8	69.0
6	MS-MBA-3.3-C2-H4	130.2	61.8	68.3
7	MS-MBA-3.3-F2-H4	130.2	61.8	68.3
8	MS-MBA-3.3-LAA2-C4	121.4	42.9	36.2
9	MS-MBA-3.3-LAA2-F4	121.4	42.9	36.2
10	MS-MBA-3.2-H8-L4	244.0	61.9	72.6
11	MS-MBA-3.2-H8-T4	244.0	61.9	72.6
12	MS-MBA-3.2-H4-L4	183.2	61.9	72.3
13	MS-MBA-3.2-H4-T4	183.2	61.9	72.3
14	MS-MBA-3.2-H2-L2	99.9	61.9	72.3
15	MS-MBA-3-F4A5-S	195.8	29.5	37.1
16	MS-MBA-3-F4A5	195.8	29.5	37.1
17	MS-MBA-3-C4A3	118.9	29.5	37.1
18	MS-MBA-3-F4A3	118.9	29.5	37.1
19	MS-MBA-3-F4	55.7	36.3	46.8
20	MS-MBA-3-F2	37.0	36.3	46.8
21	MS-MBA-3-H8A2	241.9	61.8	68.3
22	MS-MBA-3-H8	164.0	61.8	68.3
23	MS-MBA-3-H4	89.9	61.8	68.3
24	MS-MBA-3-H2	52.9	61.8	68.3
25	MS-MBA-3-L4A2-S	241.9	93.7	108.6
26	MS-MBA-3-L4A2	241.9	93.7	108.6
27	MS-MBA-3-T4A2	241.9	93.7	108.6



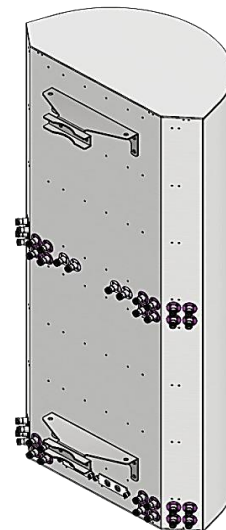
1.20 MBA-6 series models

no.	Model	Dimensions (cm)		
		Height	Width	Depth
1	MS-MBA-6-H4	126.8	93.7	108.6
2	MS-MBA-6.3-H4-L4	241.9	93.7	108.6
3	MS-MBA-6.3-H4-L2	184.4	93.7	108.6
4	MS-MBA-6.6-F2-F2-45M	110.3	61.9	72.3
5	MS-MBA-6.6-F2-F2	110.3	61.9	72.3



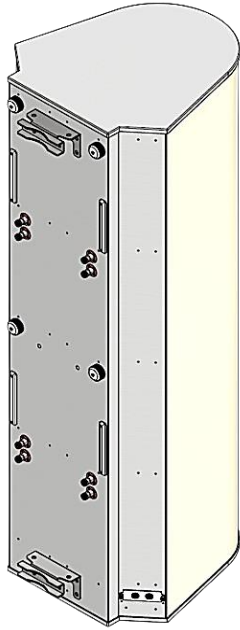
1.30 MBA-4 series models

no.	Model	Dimensions (cm)		
		Height	Width	Depth
1	MS-MBA-4.4.2-C4-H4-L4	241.9	61.9	72.3
2	MS-MBA-4.4.2-C4-H2-L2	163.7	62.0	72.2
3	MS-MBA-4.4.2-F4-H2-L2	163.7	62.0	72.2
4	MS-MBA-4.4.2-C2-H2-L2	141.2	62.0	72.2
5	MS-MBA-4.4.2-F2-H2-L2	141.2	62.0	72.2
6	MS-MBA-4.4-SH2-SH2-45M	110.3	61.9	72.3
7	MS-MBA-4.4-SH2-SH2-45	110.3	61.9	72.3
8	MS-MBA-4.4-SH2-SH2	91.2	61.7	68.3
9	MS-MBA-4.2-H2-L2	109.3	61.9	72.3
10	MS-MBA-4.2-H2-T2	109.3	61.9	72.3
11	MS-MBA-4-C8A3	152.7	70.6	52.9
12	MS-MBA-4-C4A3	159.8	36.3	42.8
13	MS-MBA-4-F2	55.0	36.3	46.8
14	MS-MBA-4-H4	110.3	61.9	72.3
15	MS-MBA-4-H2	63.5	61.9	72.3



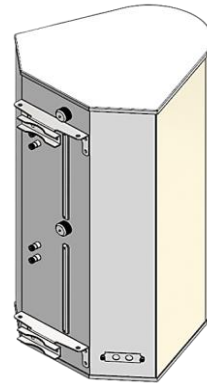
1.50 MBA-2 series models

no.	Model	Dimensions (cm)		
		Height	Width	Depth
1	MS-MBA-2-L4A2	177.8	61.9	72.3
2	MS-MBA-2-L4	112.3	61.9	72.3
3	MS-MBA-2-L2	63.9	61.3	72.0
4	MS-MBA-2-T2	63.9	61.3	72.0



1.60 MBA-1 series models

no.	Model	Dimensions (cm)		
		Height	Width	Depth
1	MS-MBA-1-T4	109.8	61.8	68.34



2.00 Wooden crate unpacking tools and steps

2.10 Unpacking tools



Crow bar



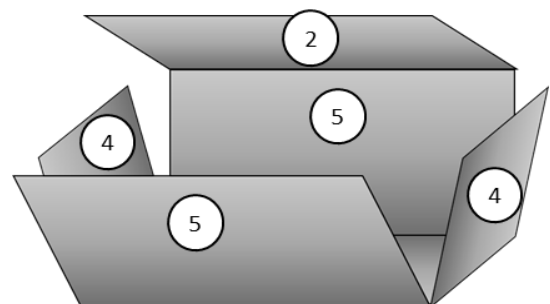
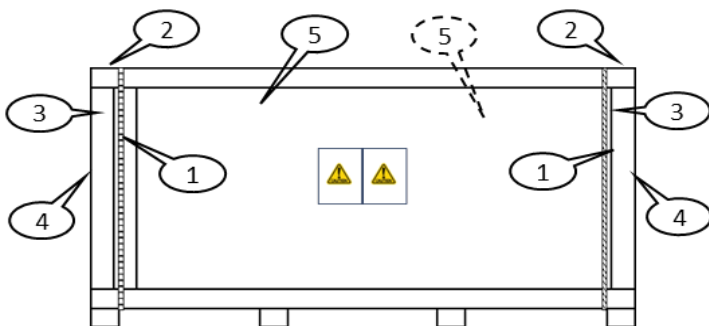
Cutter



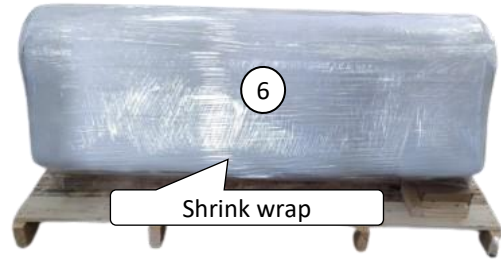
Electric Driver

2.20 Large size crate

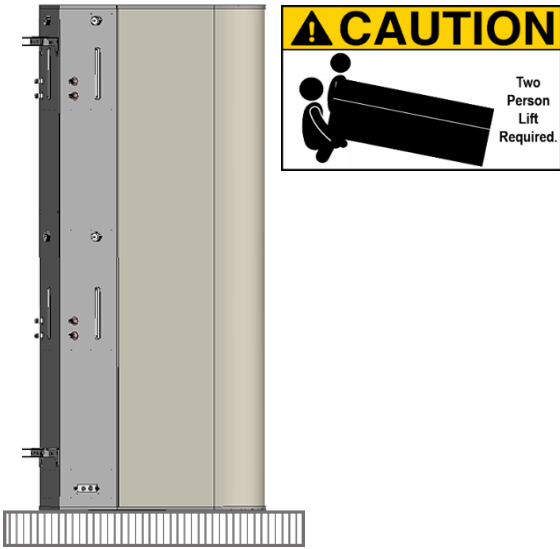
Step 1	Use a cutter to cut and remove plastic straps.
Step 2	Unscrew and remove the top panel.
Step 3	Unscrew the left and right sides to remove the rear panel.
Step 4	Remove left and right side panels.
Step 5	Remove front and rear panels.



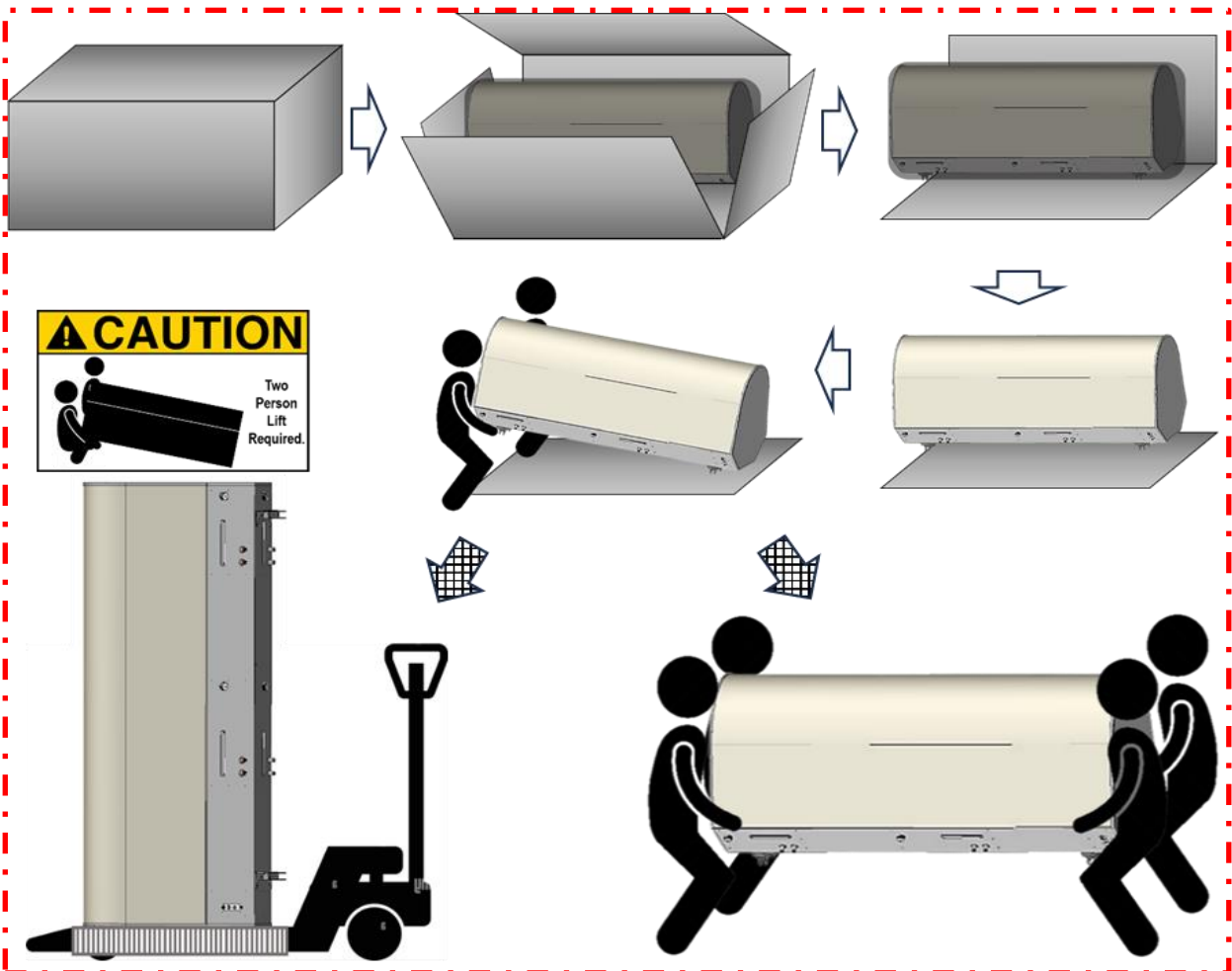
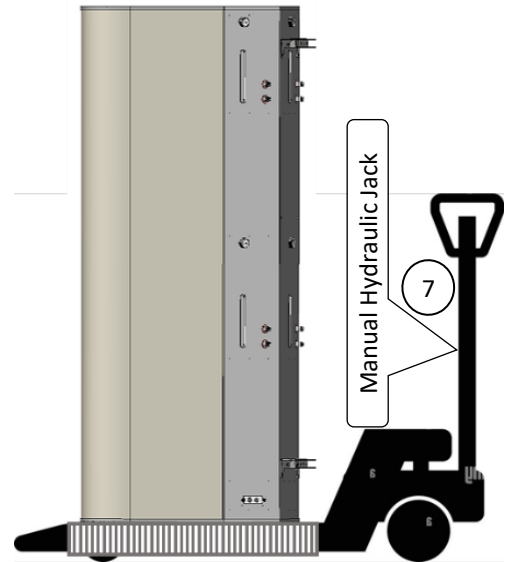
Step 6 Unwrapping shrink wrap.



Step 7 With 2 men, lift up the antenna vertically and place it on the pallet.

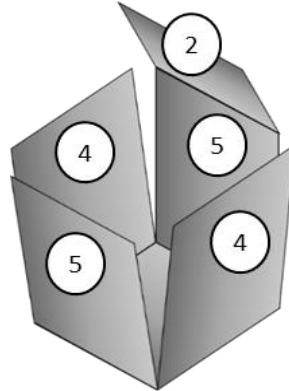
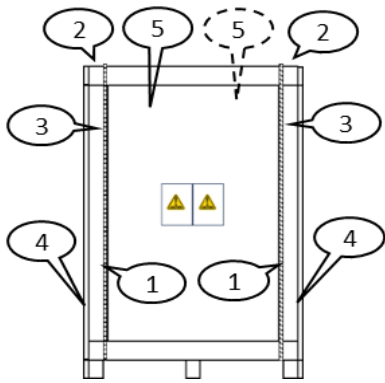


Step 8 Use a manual hydraulic jack for transporting



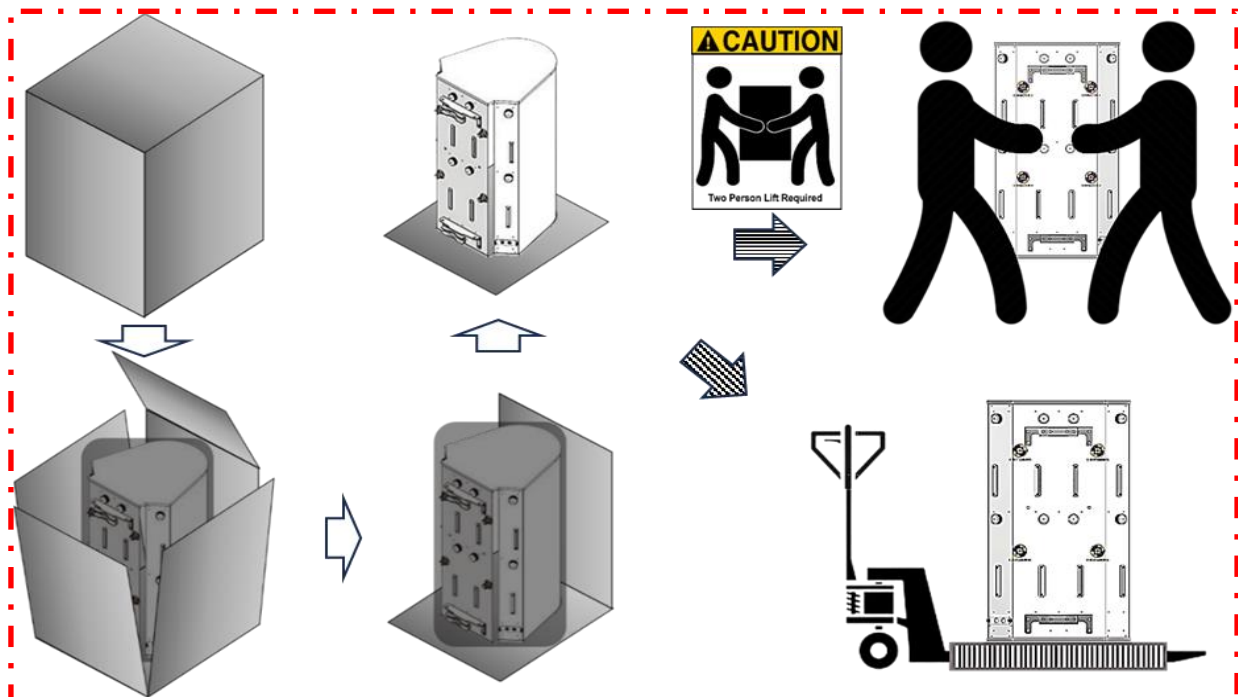
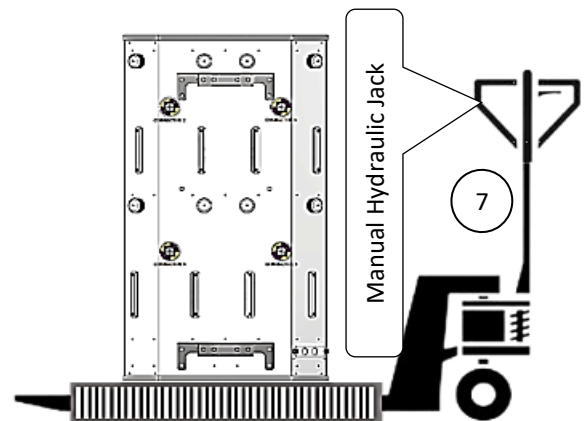
2.30 Medium and small size crate

Step 1	Use a cutter to cut and remove plastic straps.
Step 2	Unscrew and remove the top panel.
Step 3	Unscrew the left and right sides to remove the rear panel.
Step 4	Remove left and right side panels.
Step 5	Remove front and rear panels.



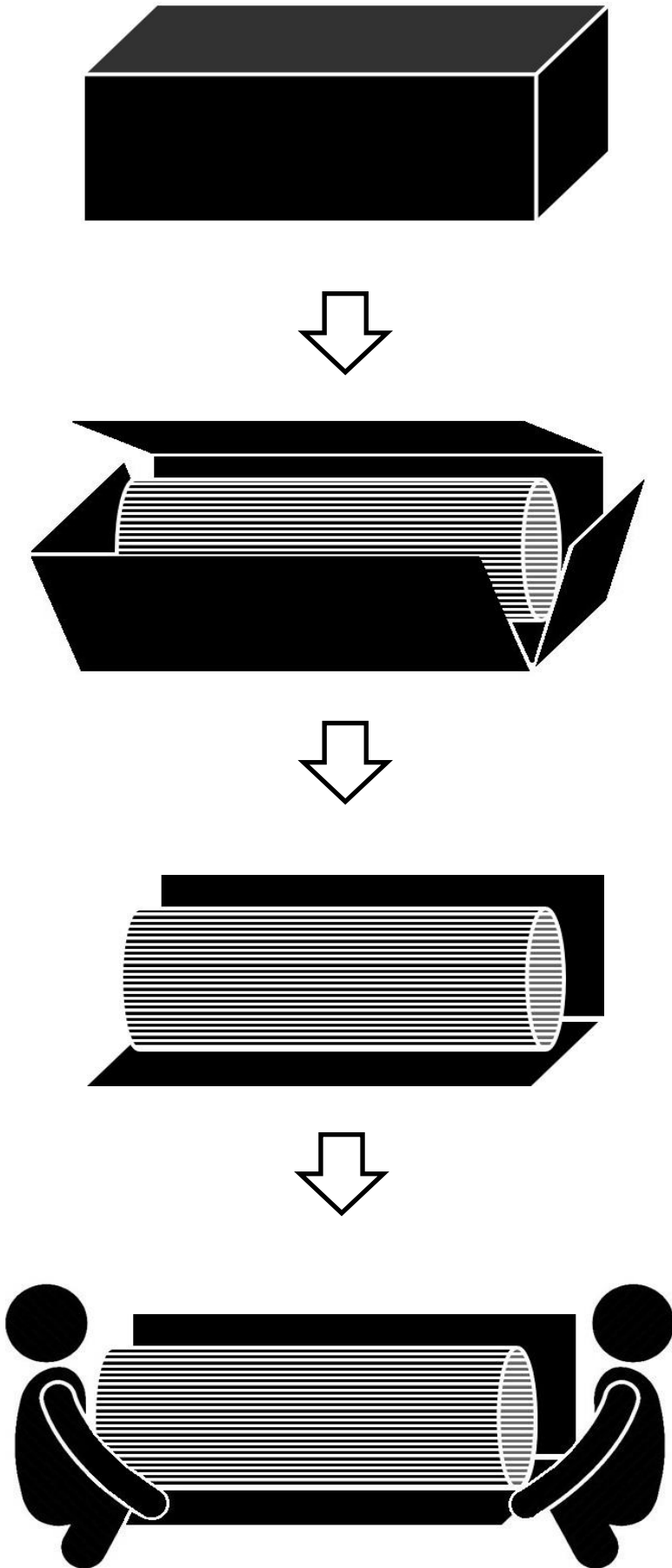
Step 6	Unwrapping the shrink wrap, lift up the antenna, and place it on the pallet.
--------	--

Step 7	Use a manual hydraulic jack for transporting
--------	--

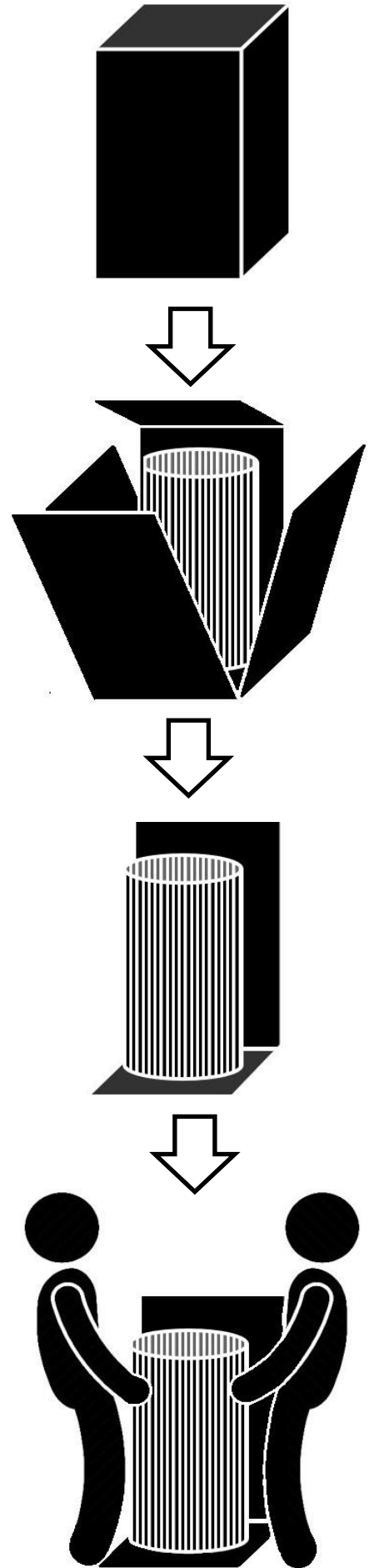


3.00 Wooden crate unpacking and caution label

3.10 "L" size crate unpacking



3.20 "M" and "S" size crate unpacking



3.30 Safe handling and transporting

3.31 Safe handling



3.32 Safe lifting



3.33 Safe transporting

