

MATSING[®]

LENS TECHNOLOGY ENABLED

MS MBC Series antenna's
(Unpacking instruction)

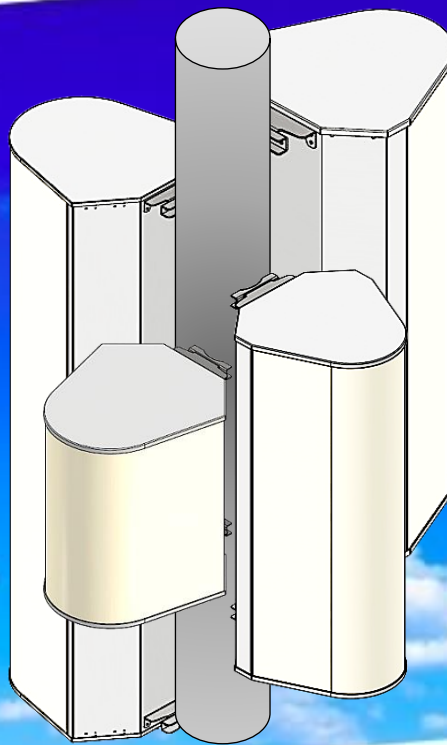


Table Of Contents

1.00 Multi beam cylindrical antenna's (MBC) product overview

- 1.10 MBC-4 series models
- 1.20 MBC-3 series models
- 1.30 MBC-2 series models

2.00 Antenna unpacking

- 2.10 Carton box unpacking
 - 2.11 Use a cutter to cut the plastic straps.
 - 2.12 Remove the top cover sealing tape.
 - 2.13 Open and lift up the top cover.
 - 2.14 Remove the center top cushion sponge.
 - 2.15 Lift up the antenna with both side sponges.
 - 2.16 Lifting caution
 - 2.17 Place and rest on the flipped top cover.
 - 2.18 Place on pallet jet for safe transporting.
- 2.20 Wooden crate unpacking (Optional)
 - 2.21 Unpacking tools
 - 2.22 Use a cutter to cut the plastic straps.
 - 2.23 Unscrew the top, rear, and side panels.
 - 2.24 Utilize the craw bar to reveal all panels.
 - 2.25 Remove the center top cushion sponge.
 - 2.26 Use pallet jets for safe transporting.

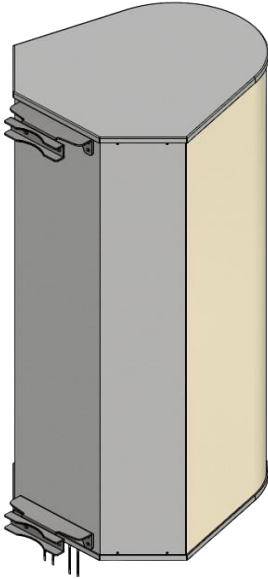
3.00 Unpacking and caution label

Revision History:

<u>Date</u>	<u>Description</u>	<u>Rev By</u>	<u>Check By</u>	<u>Rev no</u>
22-Nov-2024	Initial Release	RL	Patrick	0

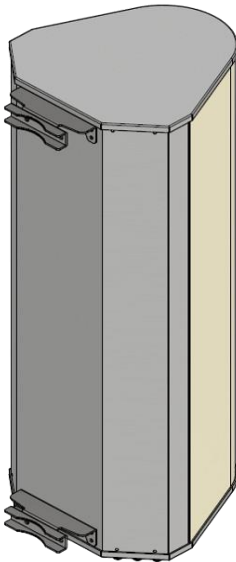
1.00 Multi beam cylindrical antenna's (MBC) product overview

1.10 MBC-4 series models



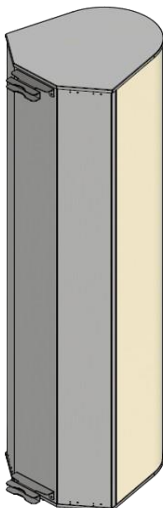
no.	Model	Dimensions (cm)		
		Height	Width	Depth
1	MS-MBC-4-H2-12	78.0	54.6	66.2
2	MS-MBC-4-H4-12	135.5	54.6	66.2
3	MS-MBC-4.2-H4-12-L4-20	173.7	77.3	77.3

1.20 MBC-3 series models



no.	Model	Dimensions (cm)		
		Height	Width	Depth
1	MS-MBC-3-H2-12	78.2	48.3	55.6
2	MS-MBC-3-H4-12	124.1	48.3	55.6

1.30 MBC-2 series models



no.	Model	Dimensions (cm)		
		Height	Width	Depth
1	MS-MBC-2-L2-15	125.0	65.0	75.7
2	MS-MBC-2-L4-15	245.5	65.0	77.1

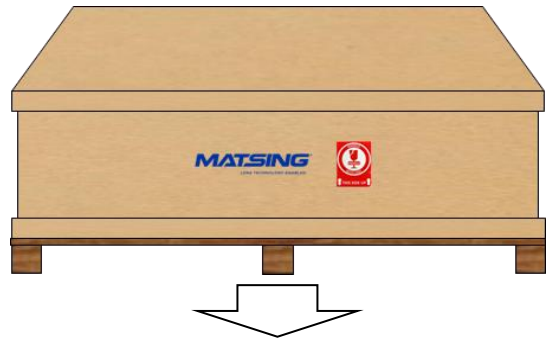
2.00 Antenna unpacking

2.10 Carton box unpacking

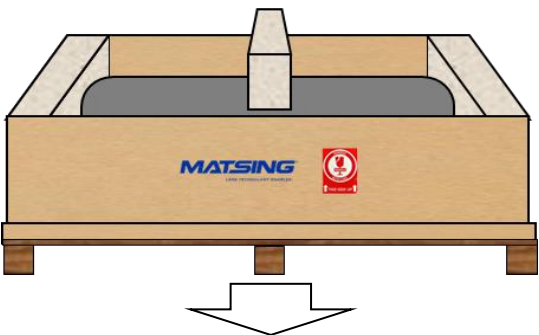
2.11 Use a cutter to cut the plastic straps.



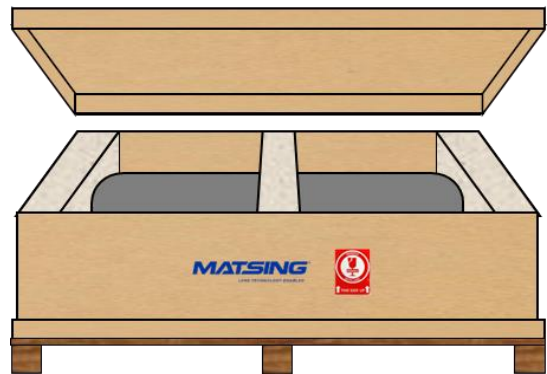
2.12 Remove the top cover sealing tape.



2.14 Remove the center top cushion sponge.



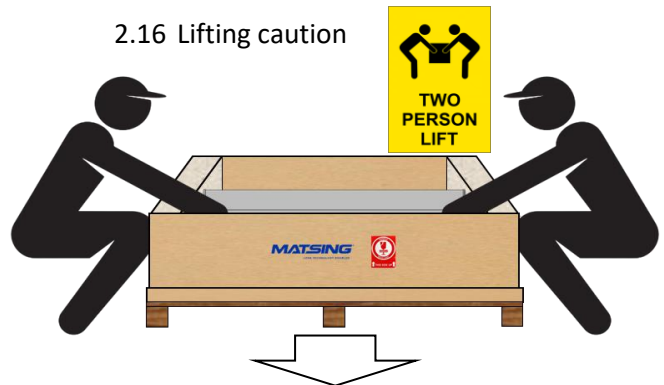
2.13 Open and lift up the top cover.



2.15 Lift up the antenna with both side sponges.

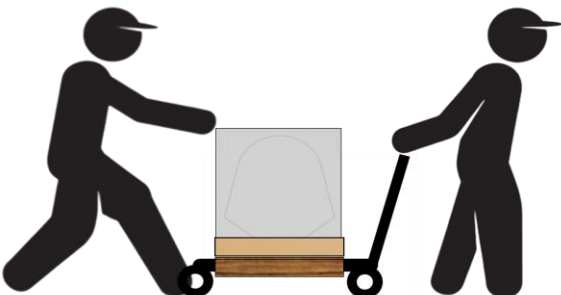


2.16 Lifting caution

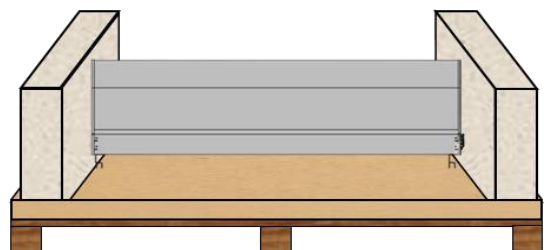


Strictly comply with the local authority on workplace safety and health control measures when performing unloading, lifting, and transporting of large or heavy equipment. Appropriate material handling machinery, safety harnesses, and tools should be used with only certified personnel performing the task.

2.18 Place on pallet jacks for safe transporting.



2.17 Place and rest on the flipped top cover.



2.20 Wooden crate unpacking (Optional)

2.21 Unpacking tools



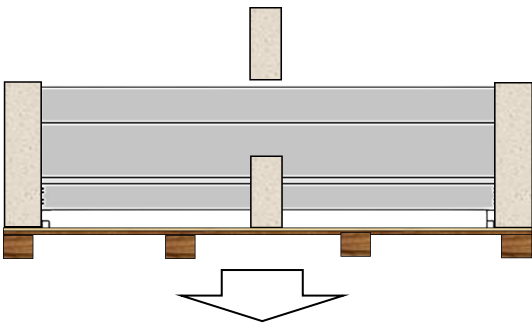
2.22 Use a cutter to cut the plastic straps.


2.23 Unscrew the top, rear, and side panels.



2.25 Remove the center top cushion sponge.

2.24 Utilize the craw bar to reveal all panels.

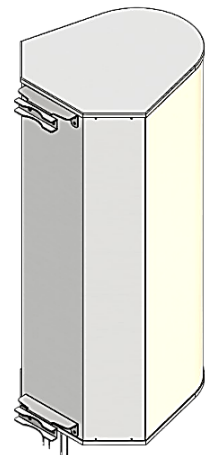
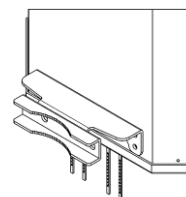
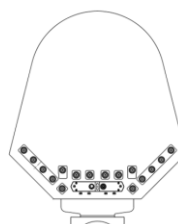


	<p><i>Strictly comply with the local authority on workplace safety and health control measures when performing unloading, lifting, and transporting of large or heavy equipment. Appropriate material handling machinery, safety harnesses, and tools should be used with only certified personnel performing the task.</i></p>
---	---

2.26 Use pallet jacks for safe transporting.



Note: The connector and tilt angle ruler are at the bottom side of the antenna; please handle them with care when during the installations.



3.00 Unpacking and caution label

