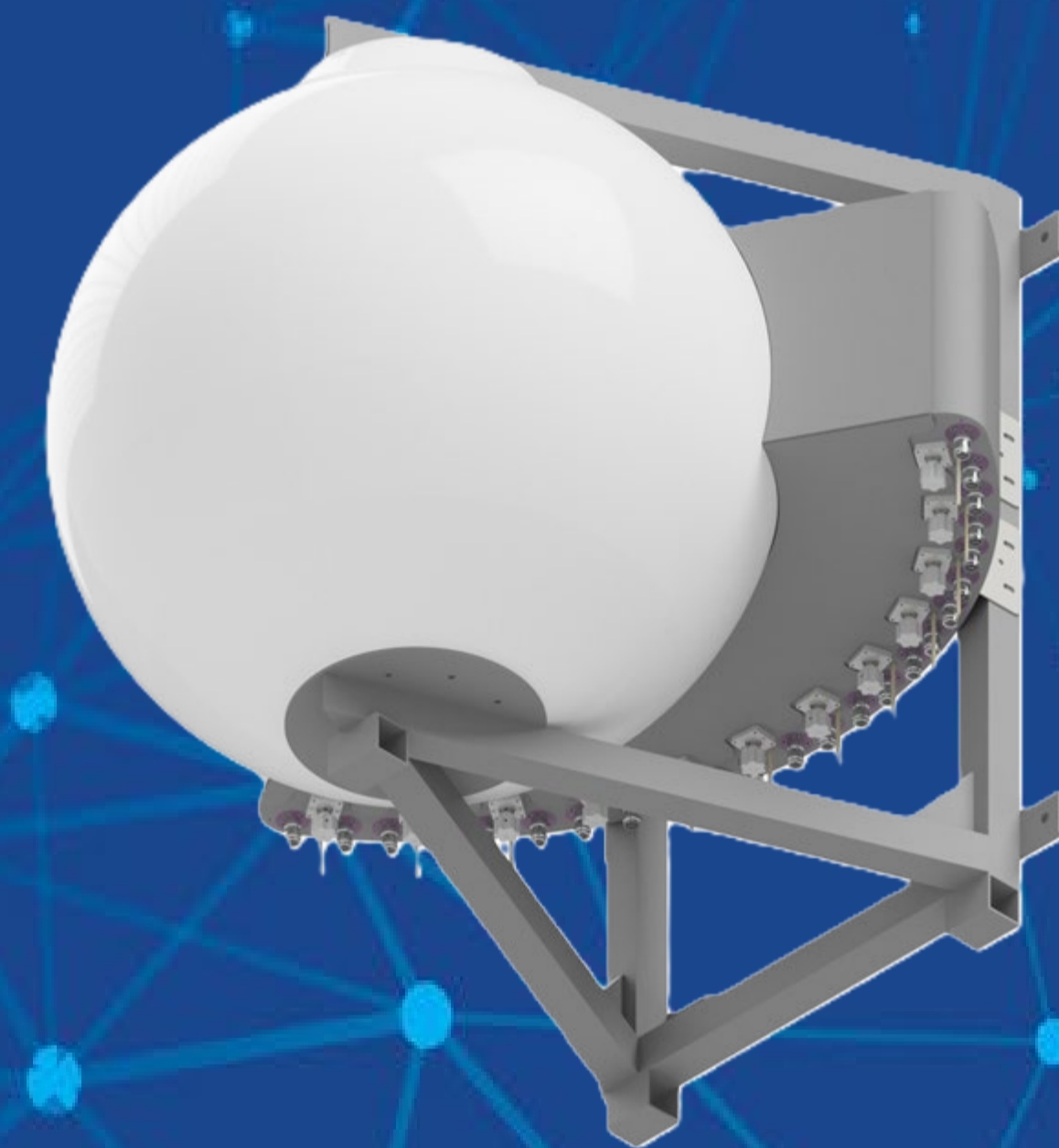


RRH Plumbing Diagrams

MS-12F90

Table of contents

1. Table of contents
2. Revision History
3. Applicable RRH Models
4. Ericsson Diagram
5. Ericsson Port Mapping
6. Nokia Diagram
7. Nokia Port Mapping
8. Samsung Diagram
9. Samsung Port Mapping



MATSING[®]

LENS TECHNOLOGY ENABLED

Revision History

Revision	Date	Details
1	08/20/2024	Initial Release
2		
3		

Applicable RRH Models

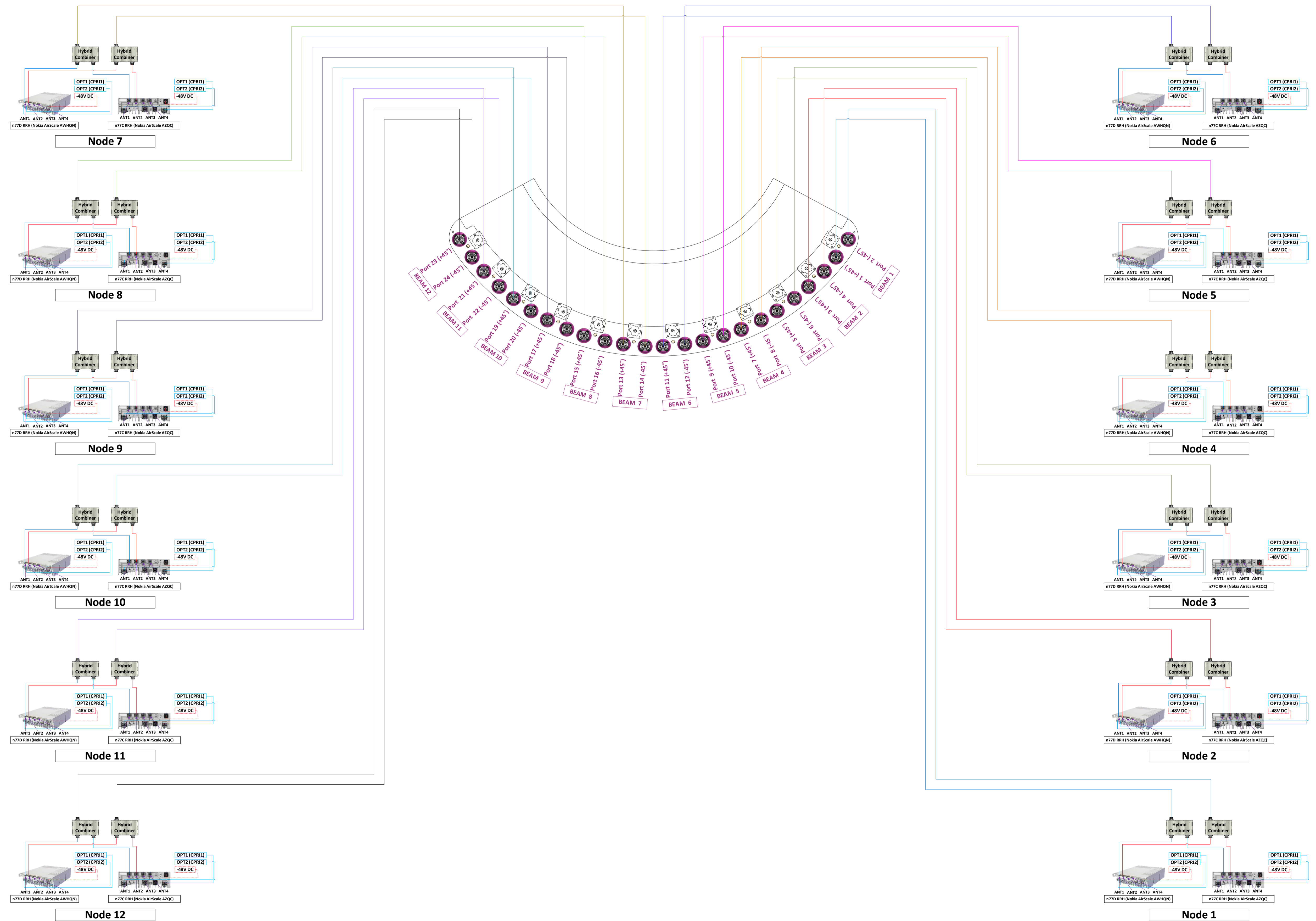
Ericsson RRHs	Nokia RRHs	Samsung RRHs
n77D (Ericsson 8863)	n77D (Nokia AirScale AWHQN)	n77D (Samsung RT8808-77A)
n77C (Ericsson 4408)	n77C (Nokia AirScale AZQC)	

Ericsson Port Mapping

MS-12F90	Node 1: n77D (Ericsson 8863) and n77C (Ericsson 4408)	Node 2: n77D (Ericsson 8863) and n77C (Ericsson 4408)	Node 3: n77D (Ericsson 8863) and n77C (Ericsson 4408)	Node 4: n77D (Ericsson 8863) and n77C (Ericsson 4408)	Node 5: n77D (Ericsson 8863) and n77C (Ericsson 4408)	Node 6: n77D (Ericsson 8863) and n77C (Ericsson 4408)	Node 7: n77D (Ericsson 8863) and n77C (Ericsson 4408)	Node 8: n77D (Ericsson 8863) and n77C (Ericsson 4408)	Node 9: n77D (Ericsson 8863) and n77C (Ericsson 4408)	Node 10: n77D (Ericsson 8863) and n77C (Ericsson 4408)	Node 11: n77D (Ericsson 8863) and n77C (Ericsson 4408)	Node 12: n77D (Ericsson 8863) and n77C (Ericsson 4408)
Port 1	A – ANT1											
Port 2	B – ANT2											
Port 3		A – ANT1										
Port 4		B – ANT2										
Port 5			A – ANT1									
Port 6			B – ANT2									
Port 7				A – ANT1								
Port 8				B – ANT2								
Port 9					A – ANT1							
Port 10					B – ANT2							
Port 11						A – ANT1						
Port 12						B – ANT2						
Port 13							A – ANT1					
Port 14							B – ANT2					
Port 15								A – ANT1				
Port 16								B – ANT2				
Port 17									A – ANT1			
Port 18									B – ANT2			
Port 19										A – ANT1		
Port 20										B – ANT2		
Port 21											A – ANT1	
Port 22											B – ANT2	
Port 23												A – ANT1
Port 24												B – ANT2

MS-12F90 with n77D and n77C RRH (Nokia AirScale AWHQN-AZQC)

REAR VIEW

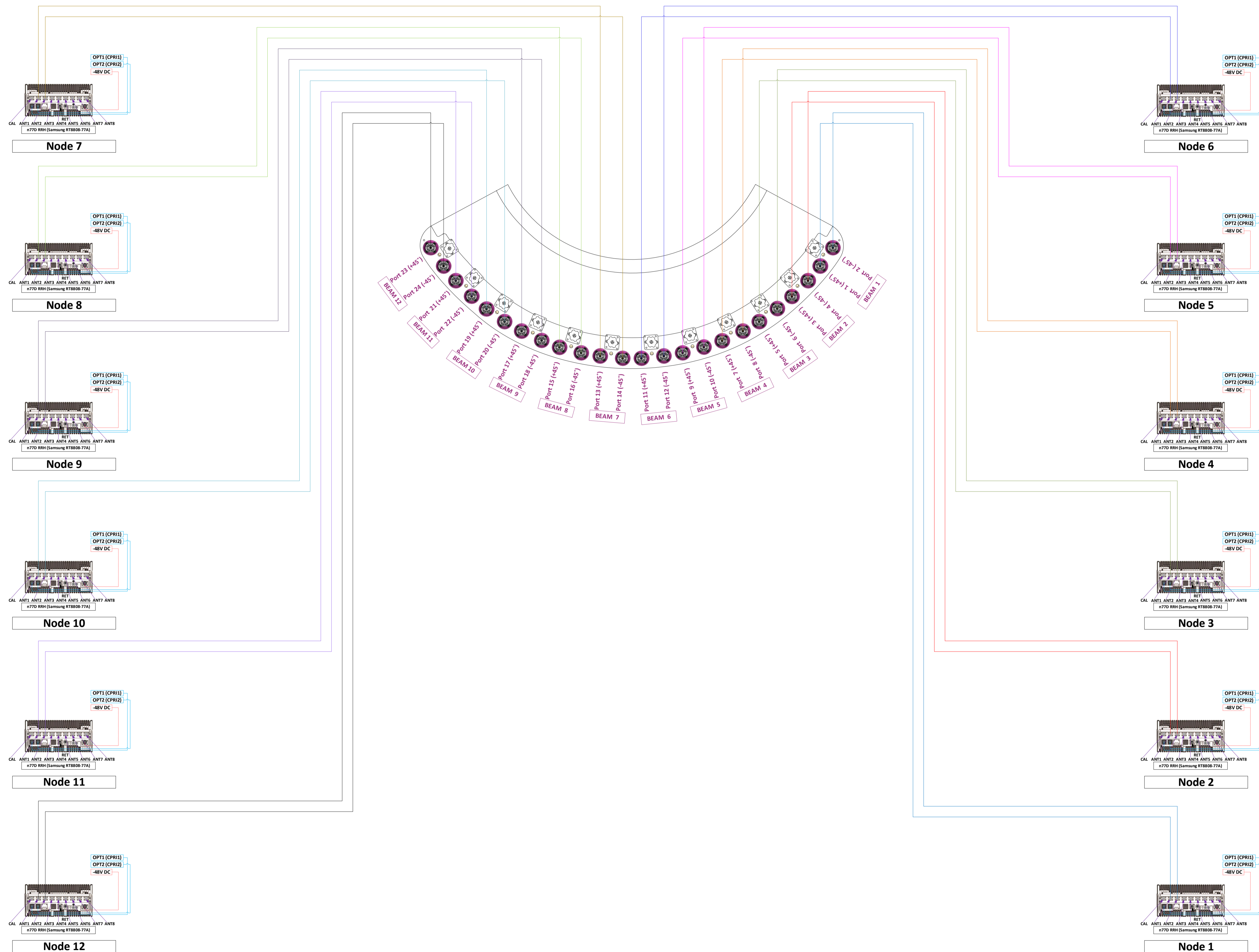


Nokia Port Mapping

MS-12F90	Node 1: n77D (Nokia AirScale AWHQN) and n77C (Nokia AirScale AZQC)	Node 2: n77D (Nokia AirScale AWHQN) and n77C (Nokia AirScale AZQC)	Node 3: n77D (Nokia AirScale AWHQN) and n77C (Nokia AirScale AZQC)	Node 4: n77D (Nokia AirScale AWHQN) and n77C (Nokia AirScale AZQC)	Node 5: n77D (Nokia AirScale AWHQN) and n77C (Nokia AirScale AZQC)	Node 6: n77D (Nokia AirScale AWHQN) and n77C (Nokia AirScale AZQC)	Node 7: n77D (Nokia AirScale AWHQN) and n77C (Nokia AirScale AZQC)	Node 8: n77D (Nokia AirScale AWHQN) and n77C (Nokia AirScale AZQC)	Node 9: n77D (Nokia AirScale AWHQN) and n77C (Nokia AirScale AZQC)	Node 10: n77D (Nokia AirScale AWHQN) and n77C (Nokia AirScale AZQC)	Node 11: n77D (Nokia AirScale AWHQN) and n77C (Nokia AirScale AZQC)	Node 12: n77D (Nokia AirScale AWHQN) and n77C (Nokia AirScale AZQC)
Port 1	ANT1 – ANT1											
Port 2	ANT2 – ANT2											
Port 3		ANT1 – ANT1										
Port 4		ANT2 – ANT2										
Port 5			ANT1 – ANT1									
Port 6			ANT2 – ANT2									
Port 7				ANT1 – ANT1								
Port 8				ANT2 – ANT2								
Port 9					ANT1 – ANT1							
Port 10					ANT2 – ANT2							
Port 11						ANT1 – ANT1						
Port 12						ANT2 – ANT2						
Port 13							ANT1 – ANT1					
Port 14							ANT2 – ANT2					
Port 15								ANT1 – ANT1				
Port 16								ANT2 – ANT2				
Port 17									ANT1 – ANT1			
Port 18									ANT2 – ANT2			
Port 19										ANT1 – ANT1		
Port 20										ANT2 – ANT2		
Port 21											ANT1 – ANT1	
Port 22											ANT2 – ANT2	
Port 23												ANT1 – ANT1
Port 24												ANT2 – ANT2

MS-12F90 with n77D RRH (Samsung RT8808-77A)

REAR VIEW



Samsung Port Mapping

MS-12F90	Node 1: n77D (Samsung RT8808-77A)	Node 2: n77D (Samsung RT8808-77A)	Node 3: n77D (Samsung RT8808-77A)	Node 4: n77D (Samsung RT8808-77A)	Node 5: n77D (Samsung RT8808-77A)	Node 6: n77D (Samsung RT8808-77A)	Node 7: n77D (Samsung RT8808-77A)	Node 8: n77D (Samsung RT8808-77A)	Node 9: n77D (Samsung RT8808-77A)	Node 10: n77D (Samsung RT8808-77A)	Node 11: n77D (Samsung RT8808-77A)	Node 12: n77D (Samsung RT8808-77A)
Port 1	ANT1											
Port 2	ANT2											
Port 3		ANT1										
Port 4		ANT2										
Port 5			ANT1									
Port 6			ANT2									
Port 7				ANT1								
Port 8				ANT2								
Port 9					ANT1							
Port 10					ANT2							
Port 11						ANT1						
Port 12						ANT2						
Port 13							ANT1					
Port 14							ANT2					
Port 15								ANT1				
Port 16								ANT2				
Port 17									ANT1			
Port 18									ANT2			
Port 19										ANT1		
Port 20										ANT2		
Port 21											ANT1	
Port 22											ANT2	
Port 23												ANT1
Port 24												ANT2