

Date	Prepared by	Approved by	Document nos	Rev
3 Aug 2022	Ray Ling	Pavel	MS-6T180-IM-001	0

INSTRUCTION MANUAL MS-6T180

TABLE OF CONTENTS:

1.00 BEAMS & CONNECTORS:

- 1.10 Plan View Resultant Beam Direction
- 1.20 Plan View Connector Layout
- 1.30 Connector Ports Table

2.00 PATTERN DIAGRAM

- 2.10 Vertical Beam Pattern
- 2.20 Horizontal Beam Pattern

3.00 MANUAL TILT ADJUSTMENT

4.00 RET ACTUATOR INSTALLATIONS (Optional)

- 4.10 Installation Process (Reverse Process for Uninstallation)
- 4.20 RET Actuator kit and tools

5.00 TRANSPORTATION / INSTALLATION

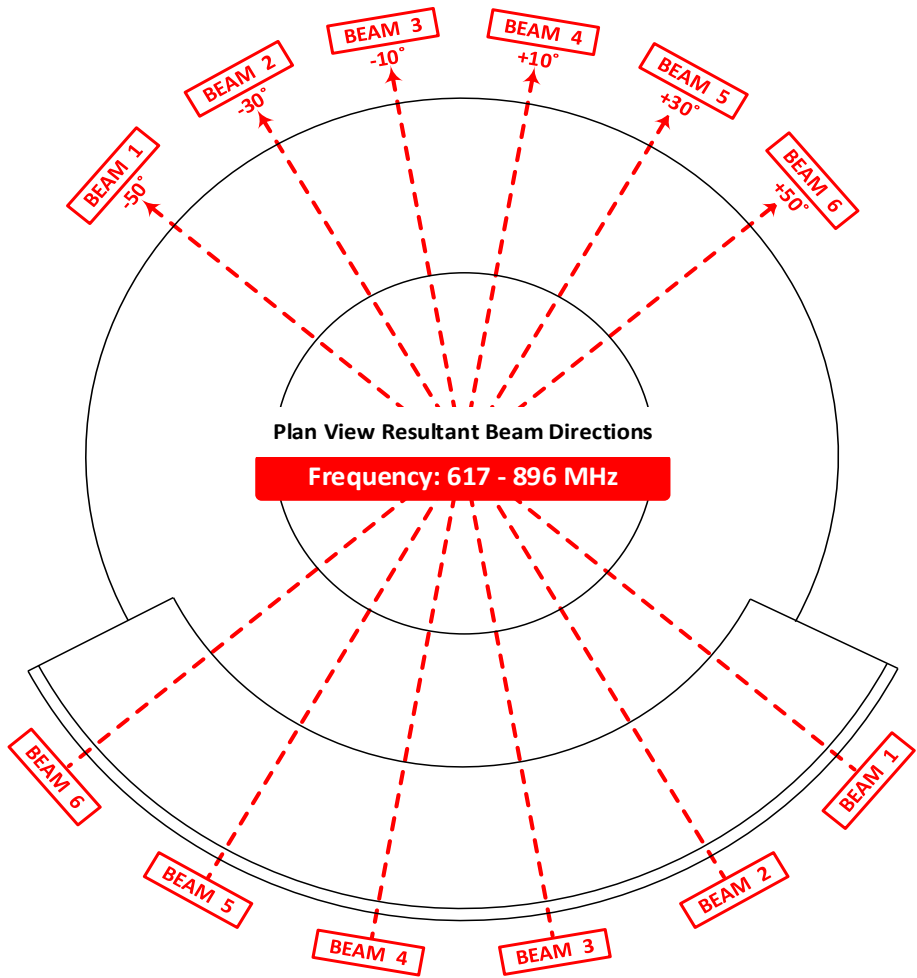
- 5.10 Transportation (From Point to Point)
- 5.20 Bracket Mounting
- 5.30 Installation using a crane
 - 5.31 Lifting the Antenna
- 5.40 Antenna Installation
 - 5.41 Antenna Leveling
 - 5.42 Digital Level Gauge Calibration
 - 5.43 Adjustment Requirement

Revision History:

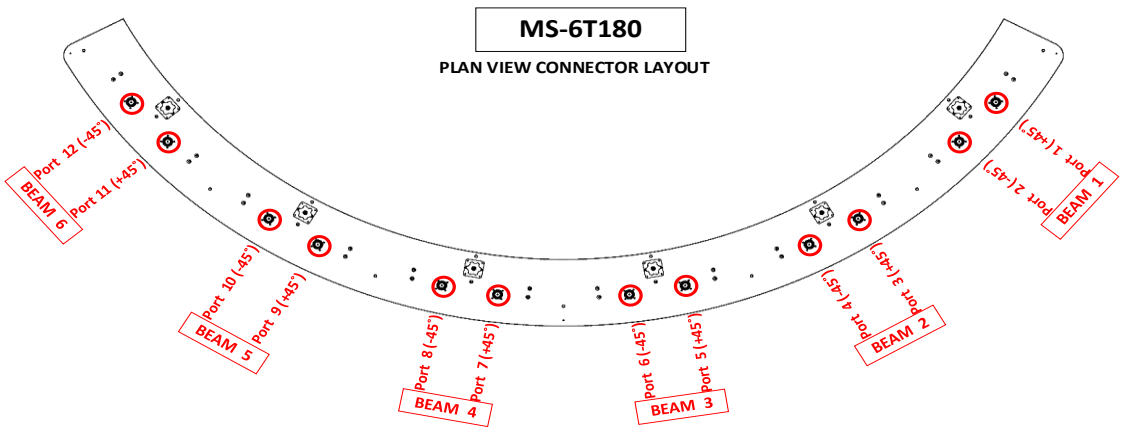
Date	Description	Revised by	Revision nos.

1.00 BEAMS & CONNECTORS:

1.10 Plan View Resultant Beam Direction



1.20 Plan View Connector Layout

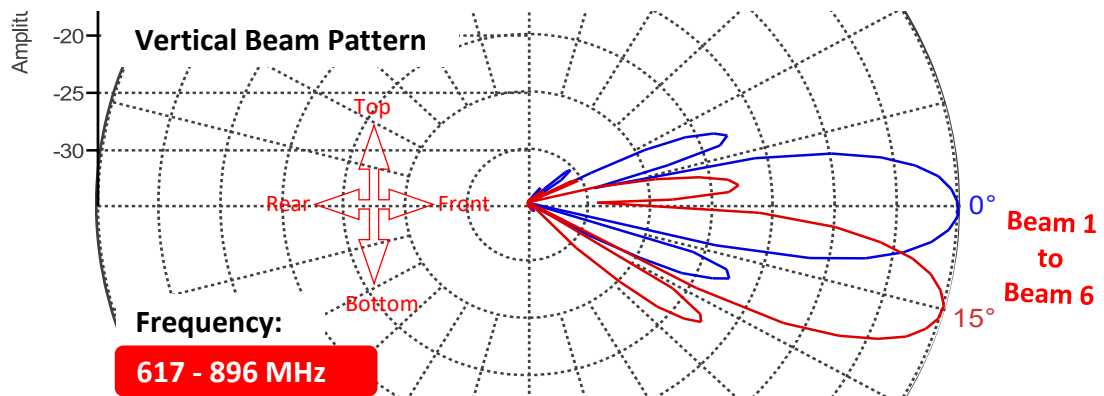


1.30 Connector Ports Table

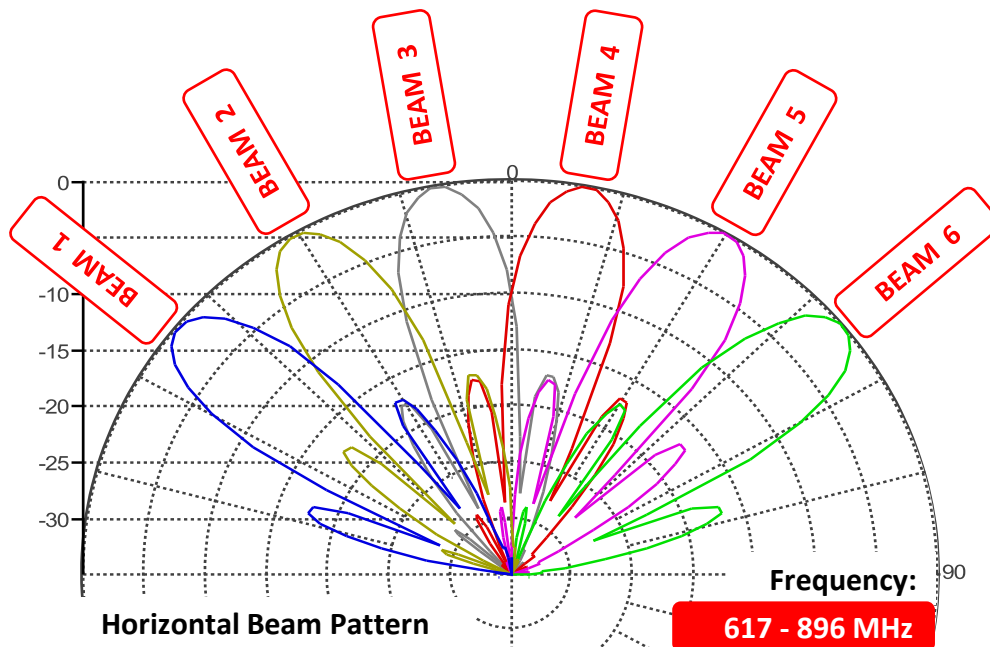
BEAM 6		BEAM 5		BEAM 4		BEAM 3		BEAM 2		BEAM 1	
PORT 12	PORT 11	PORT 10	PORT 9	PORT 8	PORT 7	PORT 6	PORT 5	PORT 4	PORT 3	PORT 2	PORT 1
(-45°)	(+45°)	(-45°)	(+45°)	(-45°)	(+45°)	(-45°)	(+45°)	(-45°)	(+45°)	(-45°)	(+45°)

2.00 PATTERN DIAGRAM

2.10 Vertical Beam Pattern

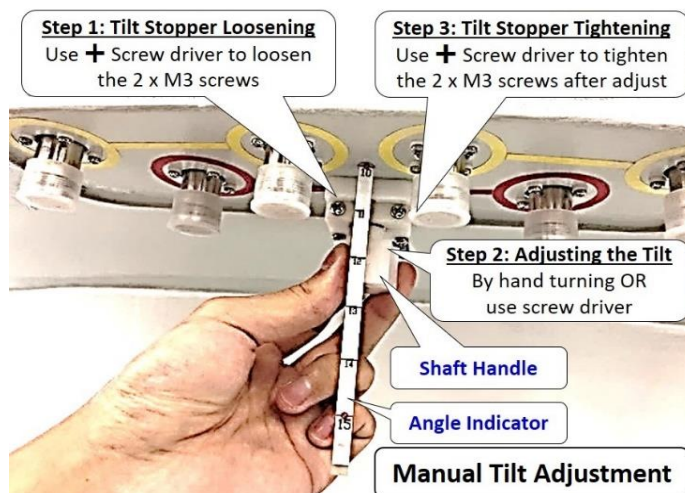


2.20 Horizontal Beam Pattern



3.00 MANUAL TILT ADJUSTMENT

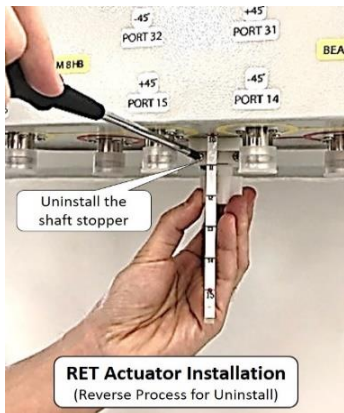
Step 1: Tilt Stopper Loosening. **Step 2:** Adjusting the Tilt. **Step 3:** Tilt Stopper Tightening.



4.00 RET ACTUATOR INSTALLATIONS (Optional)

4.10 Installation Process (Reverse Process for Uninstallation)

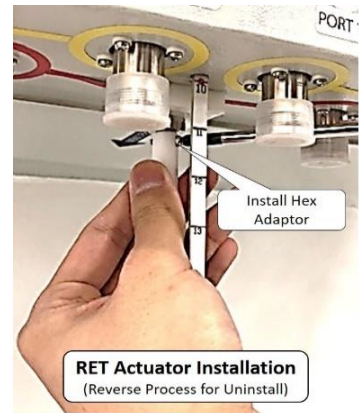
Step 1: Uninstall the Shaft stopper



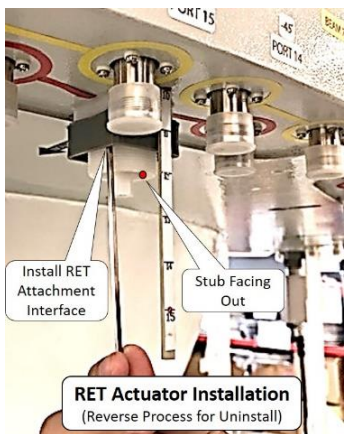
Step 2: Uninstall the Shaft Handle



Step 3: Install the Hex adaptor and screw it on



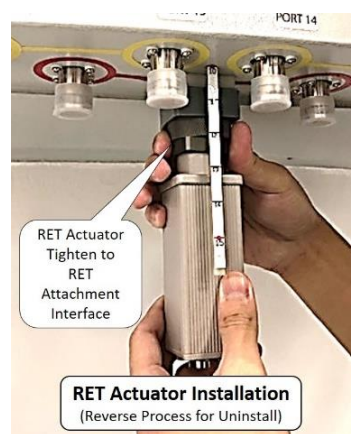
Step 4: Install the RET attachment interface



Step 5: RET Actuator stub gap facing out



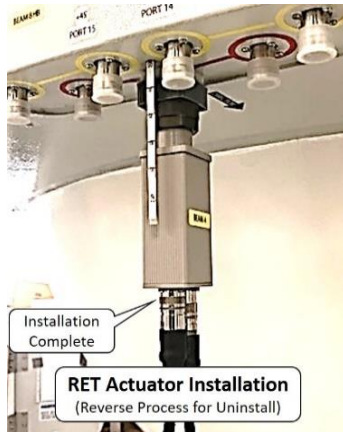
Step 6: RET Actuator Tighten to RET attachment interface



Step 7: Screw and tighten RET cable



Step 8: RET Actuator installation complete.



4.20 RET Actuator kit and tools

RET Attachment Interface (Sub-Assy)



RET Attachment Interface (Sub-Assy)

RET Attachment Interface Kits



Silicon Gasket

RET Cover

Hex Screw
(M4 x 10mm)

RET Attachment
Interface

Shaft Stopper

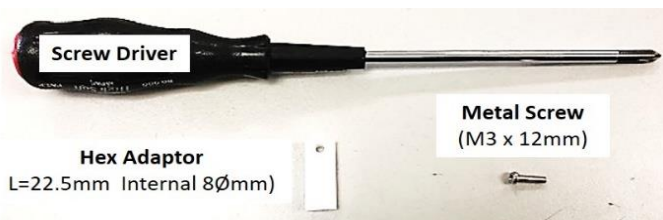
Tighten Screw
(M4 x 20mm)

Fixing Screw
(M4 x 15mm)



Shaft Stopper

Hex Adaptor



Hex Adaptor
L=22.5mm Internal 8Ømm)

Metal Screw
(M3 x 12mm)

Shaft Handle



Leadscrew
Shaft Handle



Hex Set Screw
(M3 x 6mm)



M2 Hex Key

RET Actuator



RET
ACTUATOR

RET cable



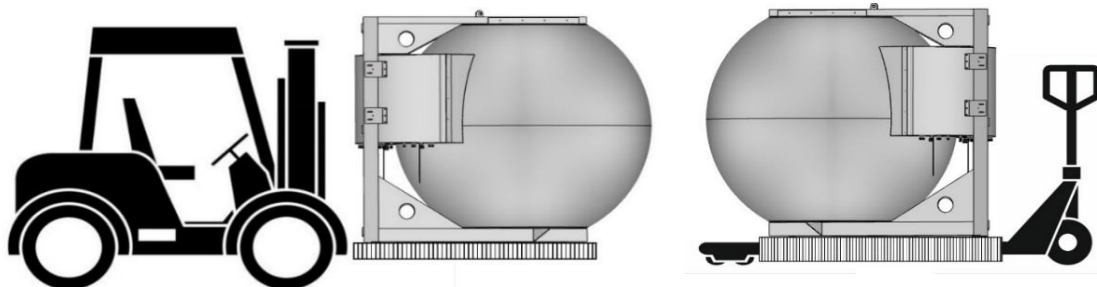
AISG
Cable

5.00 TRANSPORTATION / INSTALLATION

5.10 Transportation (From Point to Point)

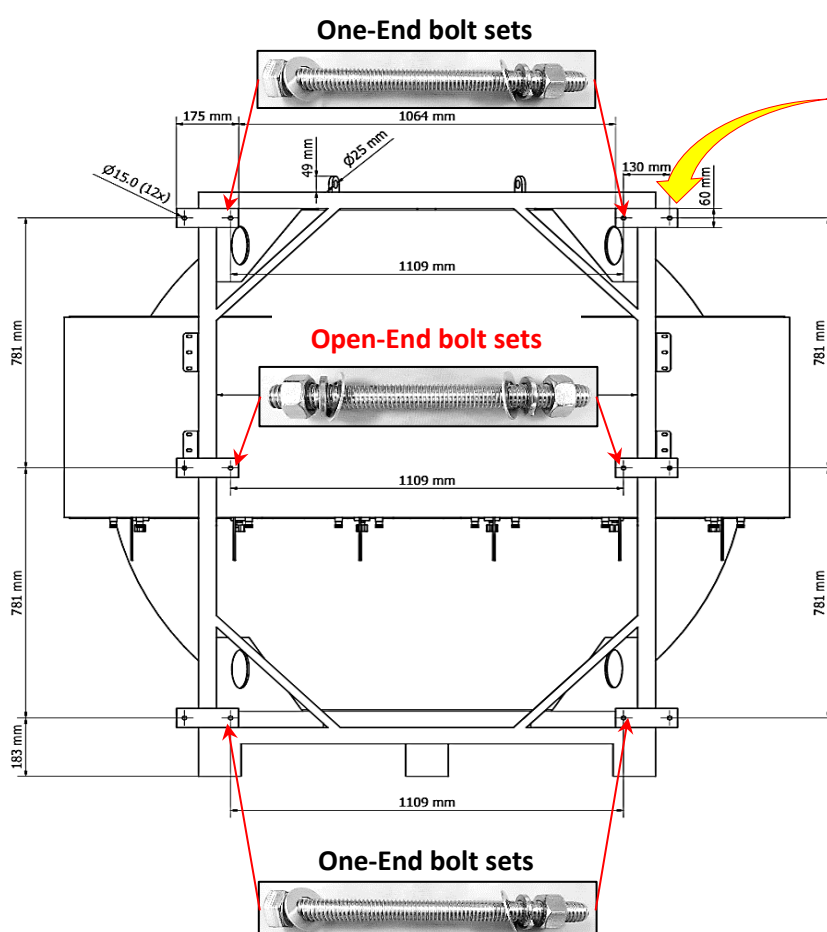
Strictly comply to the Local authority and regulatory on Workplace Safety and Health Control and Measure when moving and transportation of large or heavy equipment, appropriate material handling machine should be use.

(Risk Assessment apply for Forklift or Pallet Truck Lifting)



5.20 Bracket Mounting

					For Direct behind backshell
Item	Lens Size	Bracket Qty	Holes Size	One end bolt & nuts sets	<u>Open-End bolt & nuts sets</u>
1	180cm	6	Ø15mm x 12	M14 x 15cm=12sets	M14 x 15cm=4sets



Attached the bracket tighten with specified bolts sets.

Important Notes:

End User is require to Custom-Make the additional supporting bracket and tighten to the existing Antenna bracket to meet the deployment

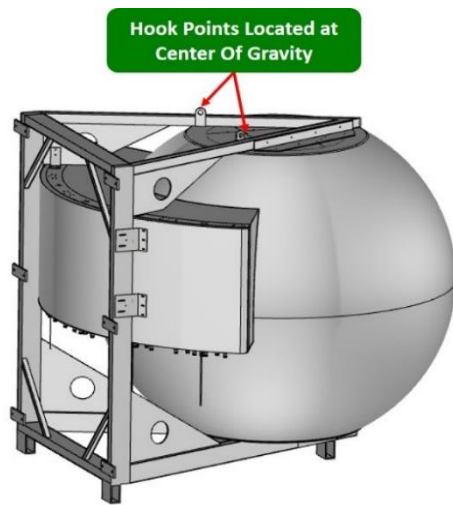
5.30 Installation using a crane

Strictly comply to the local authority and regulatory on Workplace Safety and Health Control and Measure when performing lifting of large or heavy equipment, appropriate material handling machine should be used and only certified personnel should perform the task.

(Risk Assessment requirement applies for both Up-Lifting and Down-Lifting.)

5.31 Lifting the Antenna

The antenna has 2 hook points installed on the top frame (located slightly behind the center of the sphere). These hooks are designed at the center of gravity point of the antenna. A cable, rope can be securely fastened to the hooks and the antenna can be lifted using a crane as pictured below.

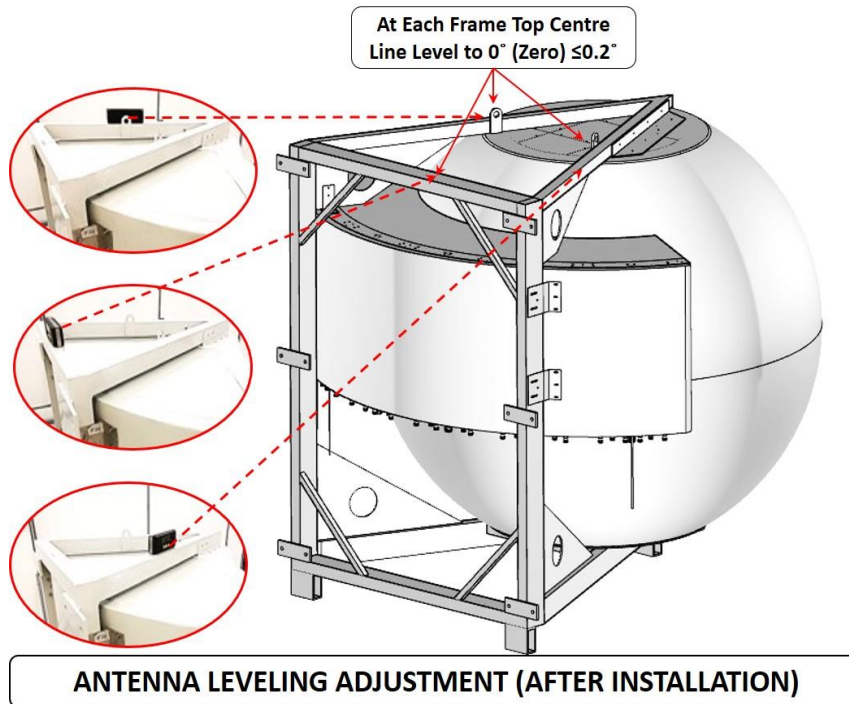


5.40 Antenna Installation

With reference to "Bracket Mounting" Procedure, End user is required to Custom-Make the additional supporting bracket and tighten it to the existing Antenna bracket to meet the deployment needs.

5.41 Antenna Leveling

After the Antenna is mounted to the bracket, it is required to be adjusted to 0° (Zero Degree) with $\leq 0.2^\circ$ on 3 sides of the frame top level. (Rear, Right & Left=As shown in picture)



5.42 Digital Level Gauge Calibration



5.43 Adjustment Requirement

