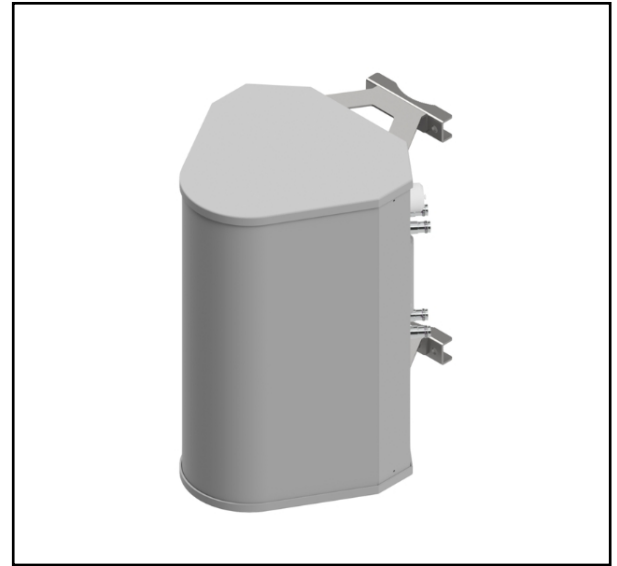


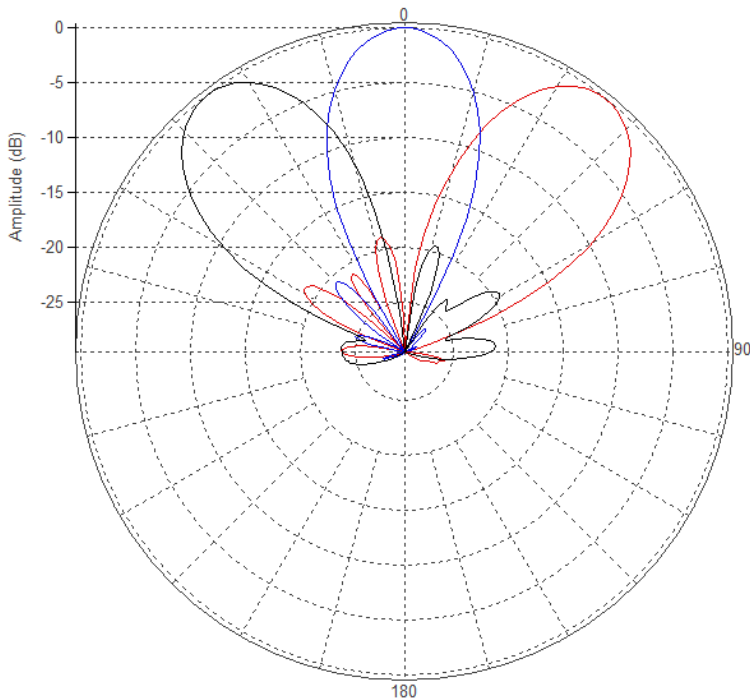
MS-MBA-3-F4

Lens Technology Enabled™ Multi-Beam Base-Station Antenna perfect for six to nine-sector LTE cell site deployments, utilizes a patented spherical lens design with 3 isolated F-Band (3300 - 4200MHz) cross-polarized beams. Each beam has 4 ports, or 4X4 MIMO. Each beam has RET from 0° to 30°.

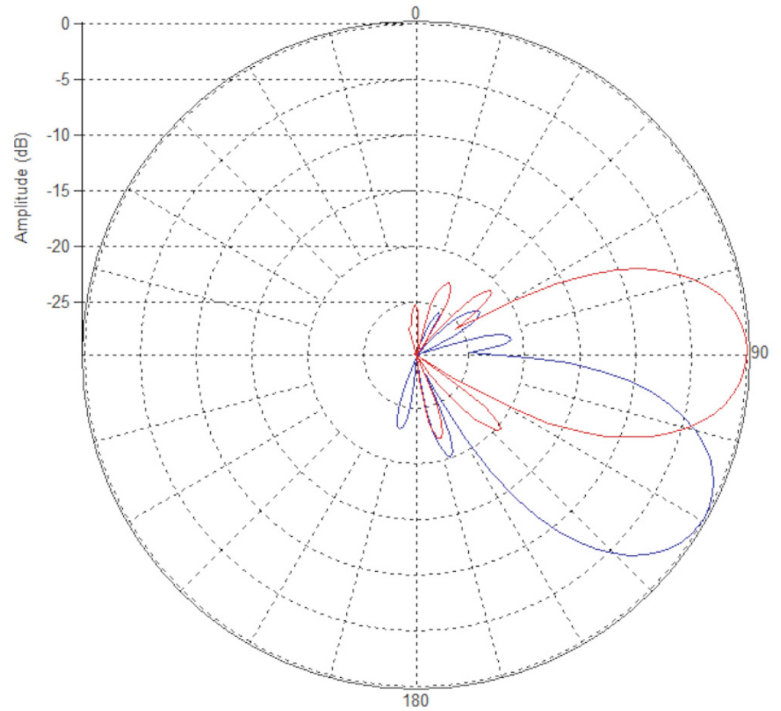


PATTERN RESULTS:

Horizontal Beam Pattern (3.6GHz)



Vertical Pattern at 0° and 30° Tilt (3.6GHz)



TECHNICAL SPECIFICATIONS

Frequency	3300 MHz – 4200 MHz
Gain	17dBi
VSWR	<1.5:1
Polarization	Dual Slant ±45°
Horizontal Coverage	120°
Horizontal Beamwidth (3dB level)	25°
Horizontal Beamwidth (10dB level)	45°
Vertical Beamwidth (3dB level)	25°
Vertical Beamwidth (10dB level)	45°
Beam Cross-over	8 dB
Total Number of Beams	3
Number of Ports per Beam	4
Number of Ports Total	12
RET	0° - 30°
First Sidelobe level	< -18dB
Front to Back Ratio	>28dB
Isolation Port to Port - Polarization	>28dB
Isolation Port to Port - Beam	>28dB
Power Rating	150W per port
Intermodulation	<-153dBc
Impedance	50 ohm
Connector Quantity and Type	12 x 4.3-10 female

MECHANICAL DATA

Dimensions (H x W x D)	61 x 41 x 38 cm 24 x 16 x 15 inch
Antenna Weight	9kg 20lbs
Radome Material	Polycarbonate
Mounting	Standard pipe mount Compatible pipe diameter: 6.1 – 11.4 cm 2.4 – 4.5 inch

ENVIRONMENTAL RATINGS

Humidity	95% RH @ +30°C
Temperature	-40°C to +70°C
Wind Load (Lateral)	TBD