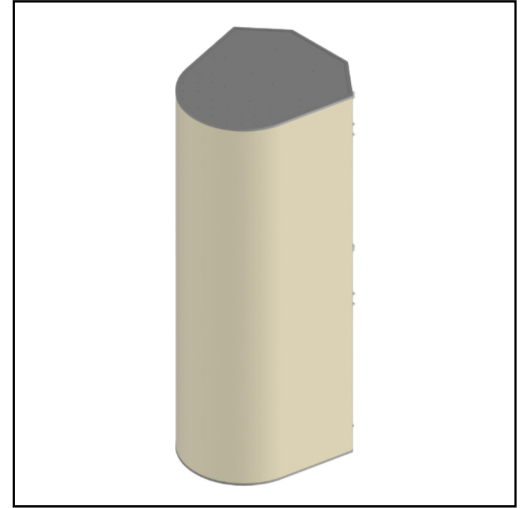


MS-MBA-3-L4A2

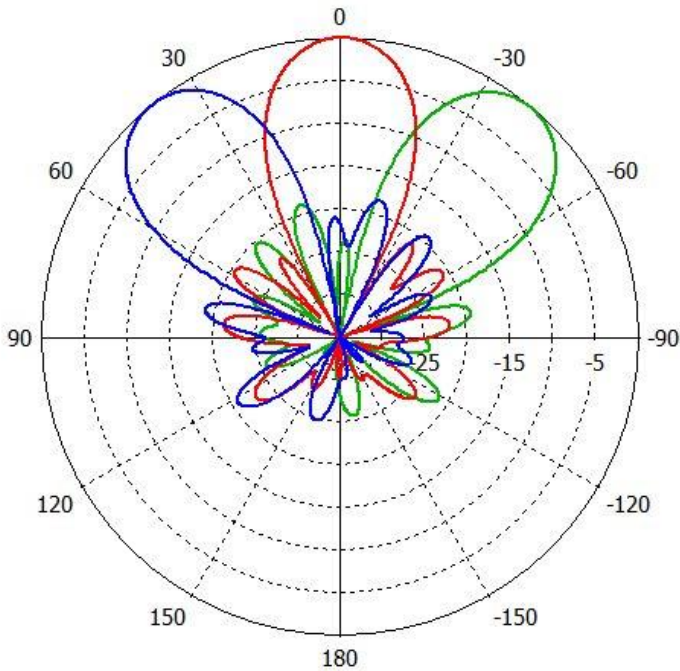
Lens Technology Enabled™ Multi-Beam Base-Station Antenna perfect for 9 sector LTE cell site deployments, utilizes a patented spherical lens design with 3 isolated low-frequency (698-960MHz) cross-polarized beams. Each beam has 4 cross-polarized ports for supporting 4x4 MIMO.

RET available from 0 to 15° for each beam.

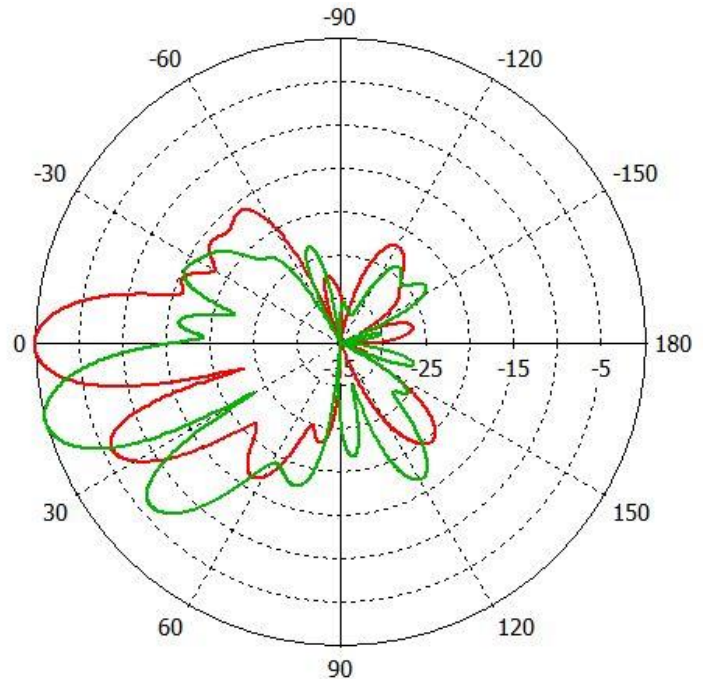


PATTERN RESULTS:

Horizontal Pattern (800MHz)



Vertical Pattern at 0° tilt and 15° tilt (800MHz)



TECHNICAL SPECIFICATIONS PER BEAM

Frequency, MHz	698-896	790-960
Gain (all tilts/ports),dBi	17.8±1	19±1
VSWR	1.5:1	1.5:1
Polarization	±45°	±45°
Beam Centers,deg	0±1; 30±1.5; -30±1.5;	0±1; 30±1.5; -30±1.5;
Horizontal Coverage,deg	120	120
Horizontal Beamwidth (3dB level),deg	24.5±1.5	23.5±1
Vertical Beamwidth (3dB level), deg	15.5±1.5	14±1
Beam Cross-over,dB	9±2	10±2
Total Number of Beams	3	
Number of Ports per Beam	4	
CPR at Boresight,dB	17	18
Beam tilt, deg	0 to 15	0 to 15
Horizontal sidelobes,dB	-15	-16
First Upper sidelobes level, dB	-15	-16
Front to Back Ratio at 180°, dB	30	
Isolation Port to Port - Polarization,dB	28	28
Isolation Port to Port - Beam,dB	26	26
Power Rating, per port,W	150	150
PIM, 3rd Order, 2x20W, dBc	-153	-153
Impedance,Ohm	50 ohm	
Connector Quantity and Type	12x 4.3-10 female	

MECHANICAL DATA

Dimensions (H x W x D)	241 x 94 x 107 cm 95 x 37 x 42 inch
Antenna Weight	140 kg 308.6 lbs
Radome Material	Fiber Glass
Mounting	Standard position pipe mount Compatible pipe diameter: 10.1 – 15.2 cm 4 – 6 inch

ENVIRONMENTAL RATINGS

Humidity	95% RH @ +30°C
Temperature	-40°C to +70°C
Wind load @ 150 km/hr	N/ibf Frontal: 1584/356.1 Lateral: 2371/533 Rear: 1858/417.7

CONNECTOR LAYOUT:

