

Date	Prepared by	Approved by	Document nos	Rev
4 Jan 2024	Ray Ling	Pavel	MS-MBA-32-22-IM-001	0

INSTRUCTION MANUAL MS-MBA-3.2-H2-L2

TABLE OF CONTENTS:

1.00 BEAMS & CONNECTORS:

- 1.10 Plan View Resultant Beam Layout
- 1.20 Connector Ports Table
- 1.30 Connector Detail
- 1.40 Connector Layout

2.00 PATTERN DIAGRAM

- 2.10 HB Horizontal Pattern
- 2.20 HB Vertical Pattern
- 2.30 LB Horizontal Pattern
- 2.40 LB Vertical Pattern

3.00 MANUAL TILT ADJUSTMENT

4.00 BRACKET INSTALLATION

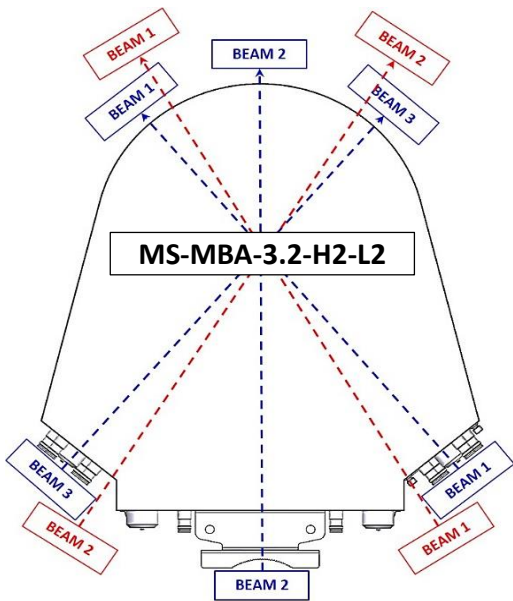
- 4.10 Bolts & Nuts Requirements
 - 4.11 Bolts & Nuts
 - 4.12 Bracket
- 4.20 Tools Requirement
 - 4.21 M12 Spanner
 - 4.22 Adjustable Spanner
- 4.30 Bracket Spacing & Installation Sample

Revision History:

Date	Description	Revised by	Rev Nos

1.00 BEAMS & CONNECTORS:

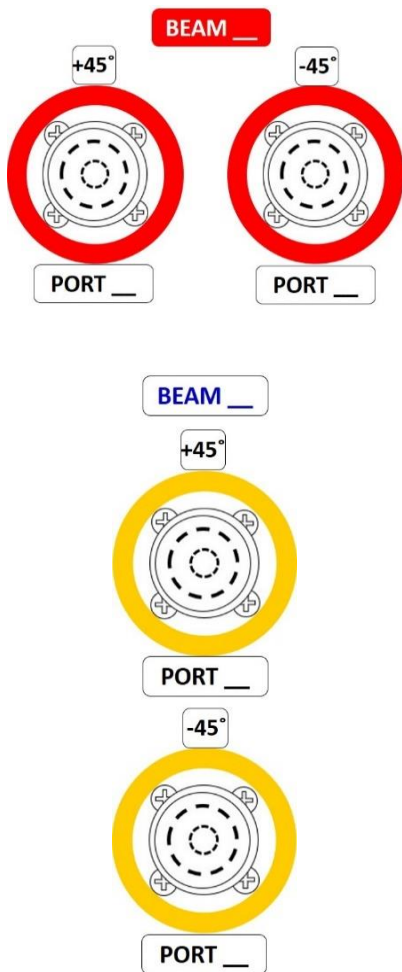
1.10 Plan View Resultant Beam Layout



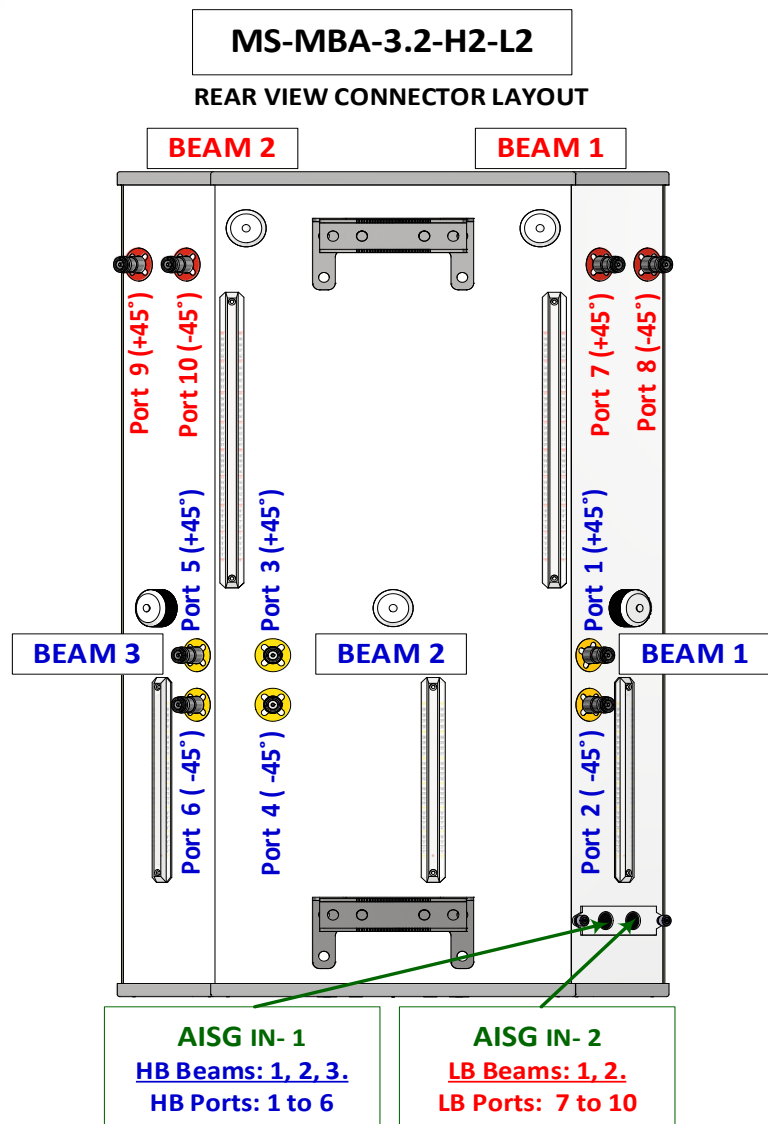
1.20 Connector Ports Table

BEAM 2		BEAM 1	
Port 9 (+45°)	Port 10 (-45°)	Port 7 (+45°)	Port 8 (-45°)
BEAM 3	BEAM 2	BEAM 1	
Port 5 (+45°)	Port 3 (+45°)	Port 1 (+45°)	
Port 6 (-45°)	Port 4 (-45°)	Port 2 (-45°)	

1.30 Connector Detail



1.40 Connector Layout

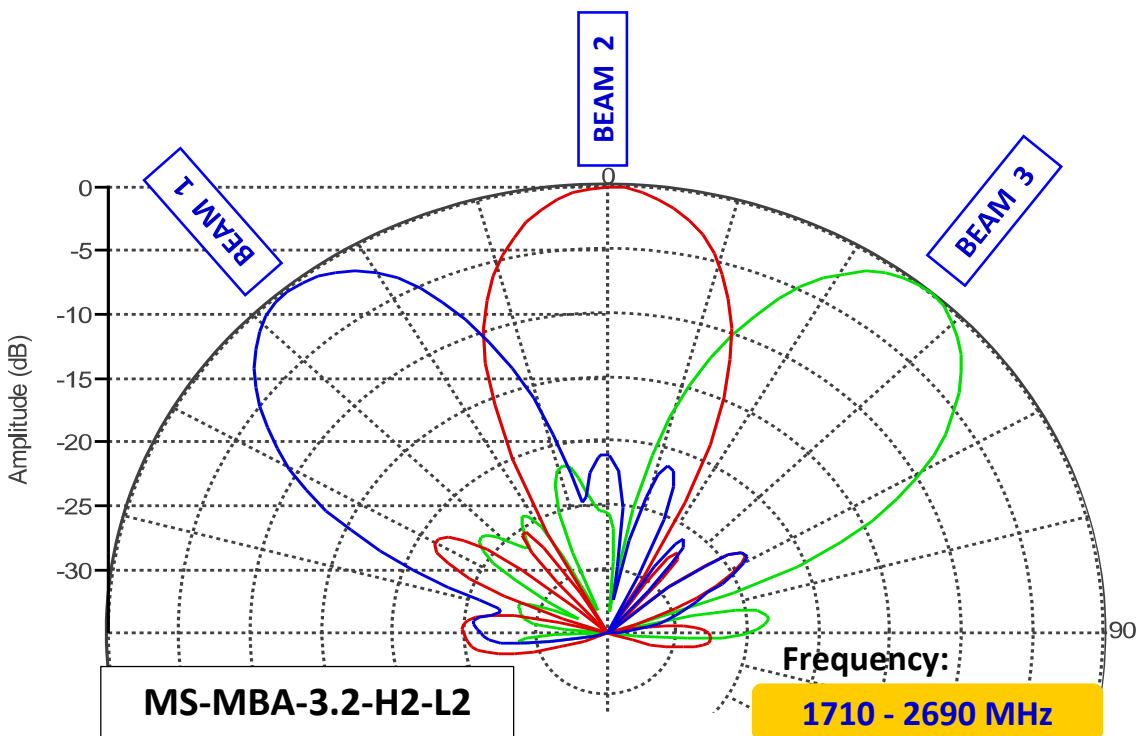


AISG IN-1
HB Beams: 1, 2, 3.
 HB Ports: 1 to 6

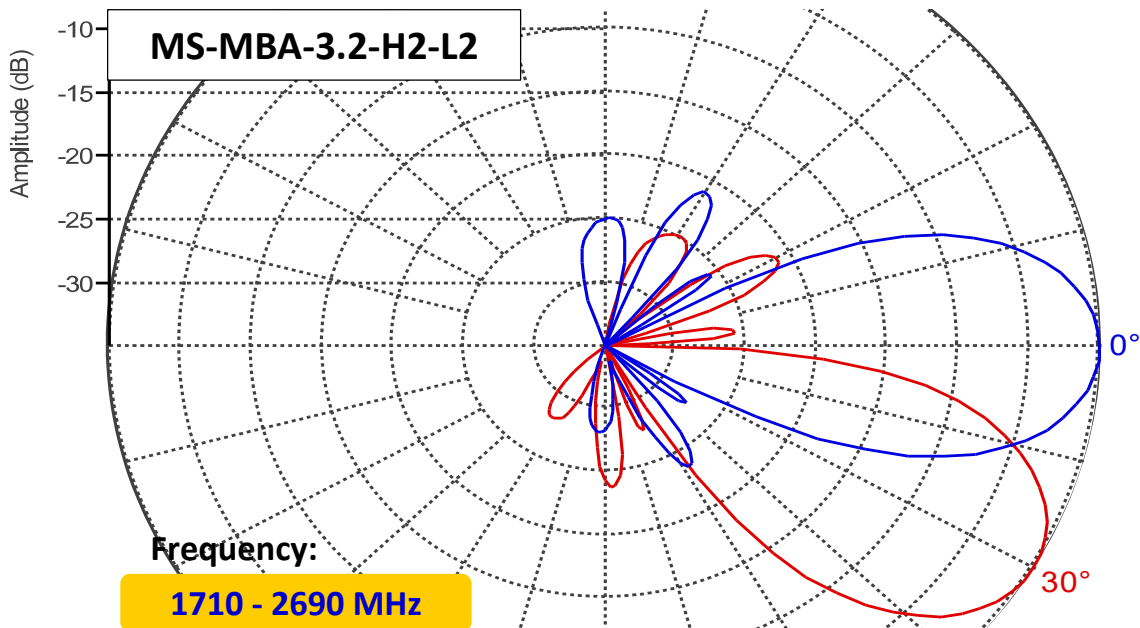
AISG IN-2
 LB Beams: 1, 2.
 LB Ports: 7 to 10

2.00 PATTERN DIAGRAM

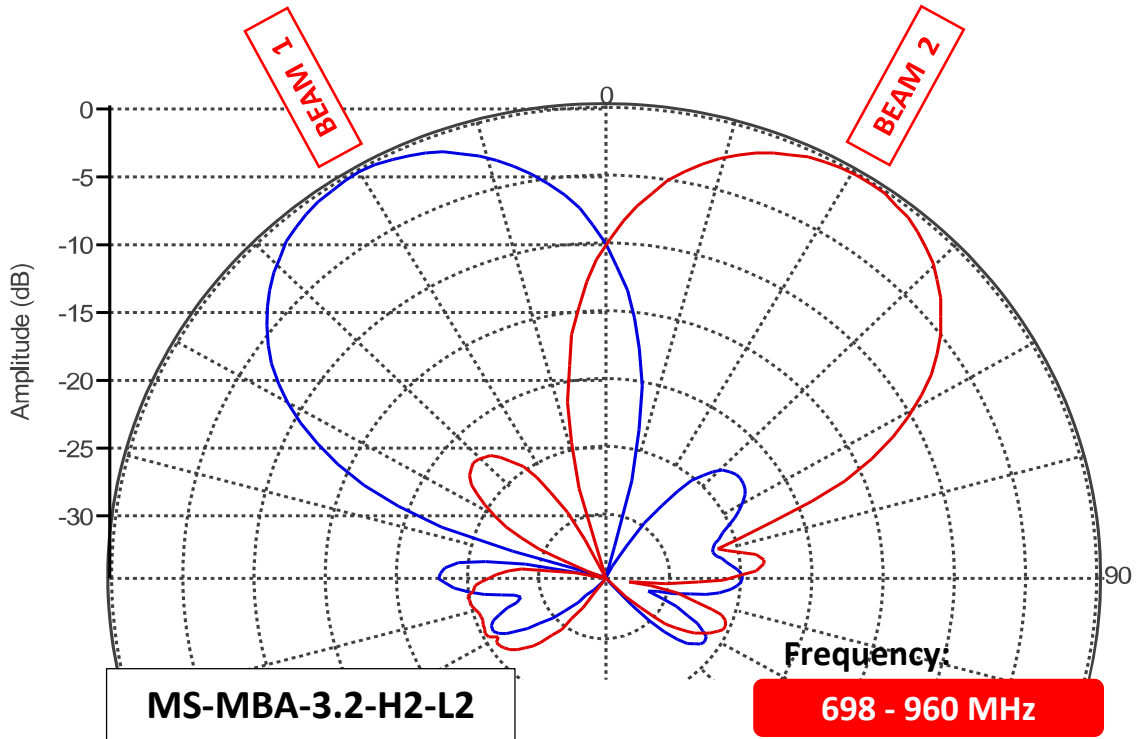
2.10 HB Horizontal Pattern



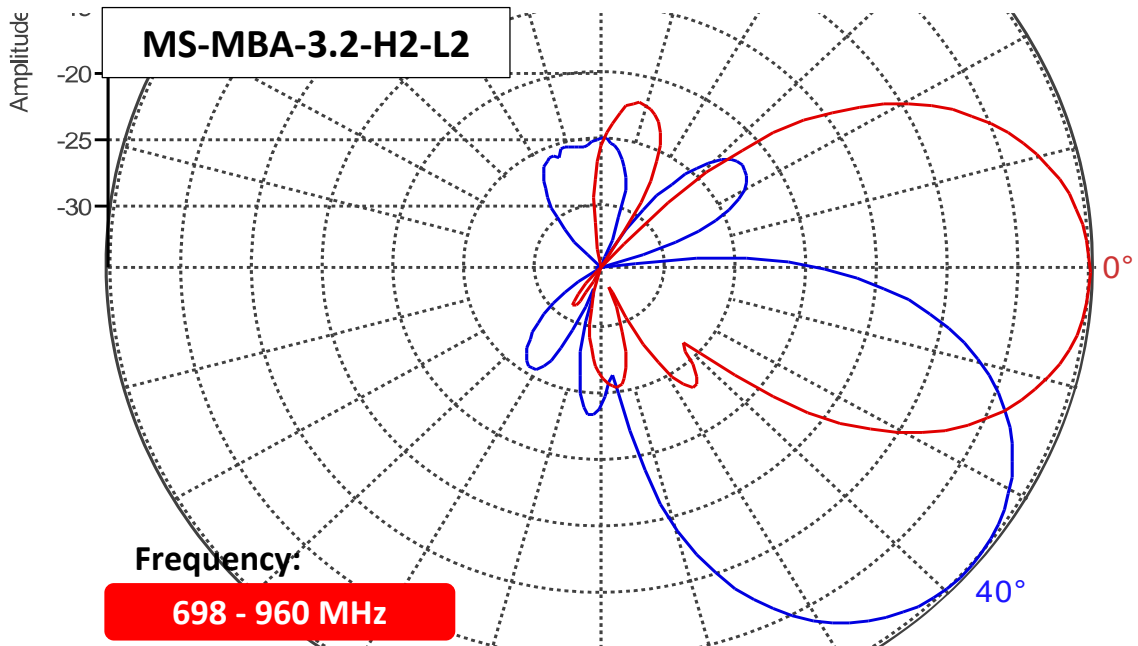
2.20 HB Vertical Pattern



2.30 LB Horizontal Pattern

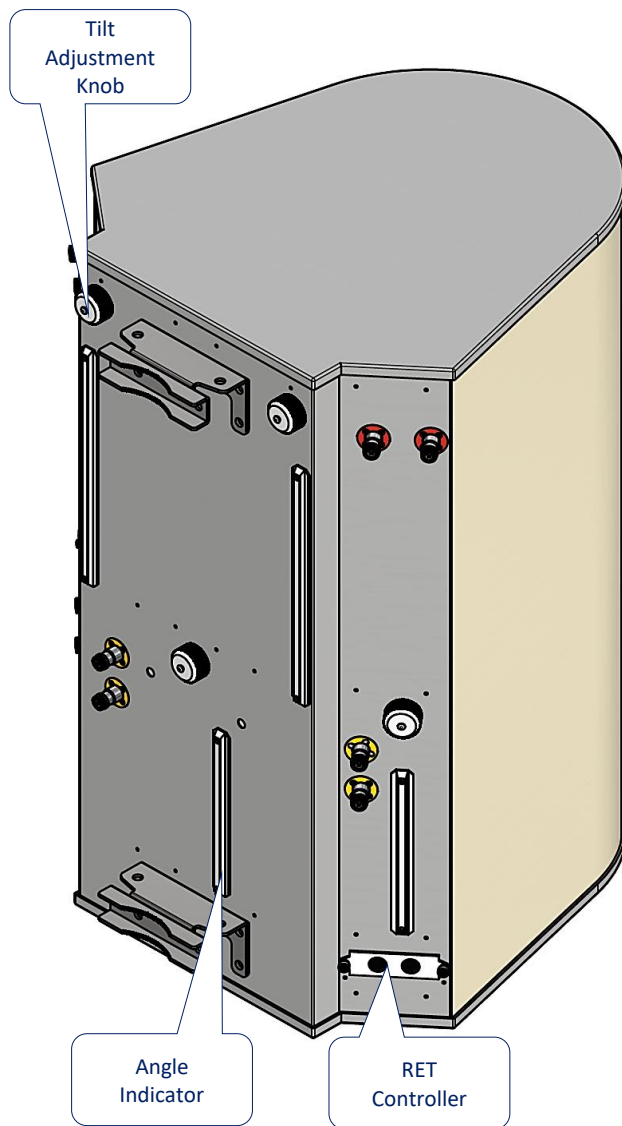


2.40 LB Vertical Pattern



3.00 MANUAL TILT ADJUSTMENT

1	The MBA antenna come in RET mode as default, but if needed can also be manually adjusted. To do so, please unscrew the waterproof cap behind the element whose tilt is to be adjusted.
2	By Default the knob is on engaged mode, pull out the handle for manual tilt adjustment, turn the handle to change the tilt.
3	When done, push the handle back in, screw the waterproof cap back to the position.



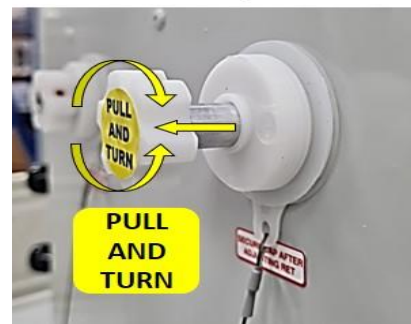
Unscrew/Screw the cap for tilt adjustment process



Engaged with internal RET motor position



Pull handle out to disengaged RET for tilt adjustment



4.00 BRACKET INSTALLATION

4.10 Bolts & Nuts Requirements

Bolts		Nuts		Bracket
Size	Qty	Size	Qty	Qty
M12 x 200mm	4	M12	10	2

4.11 Bolts & Nuts



4.12 Bracket



4.20 Tools Requirement

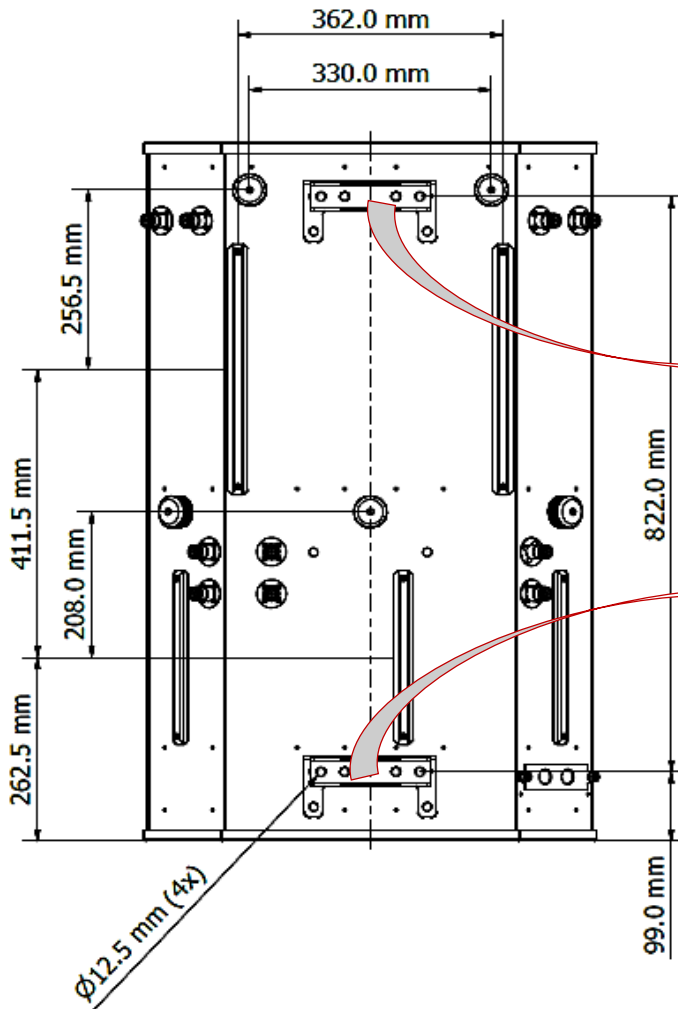
4.21 M12 Spanner



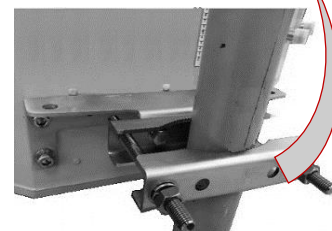
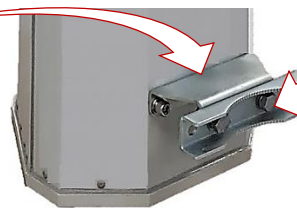
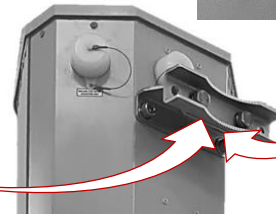
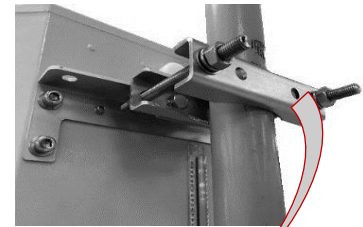
4.22 Adjustable Spanner



4.30 Bracket Spacing & Installation Sample



After installation



After Installation