

Date	Prepared by	Approved by	Document nos	Rev
16 Mar 2024	Ray Ling	Pavel	MBA-4C8A3VS-IM-001	0

INSTRUCTION MANUAL MS-MBA-4-C8A3

TABLE OF CONTENTS:

1.00 BEAMS & CONNECTORS:

- 1.10 Plan View Resultant Beam Layout
- 1.20 Connector Port Table
- 1.30 Connector Detail
- 1.40 Connector Layout

2.00 PATTERN DIAGRAM

- 2.10 Horizontal Pattern
- 2.20 Vertical Pattern

3.00 BRACKET INSTALLATION

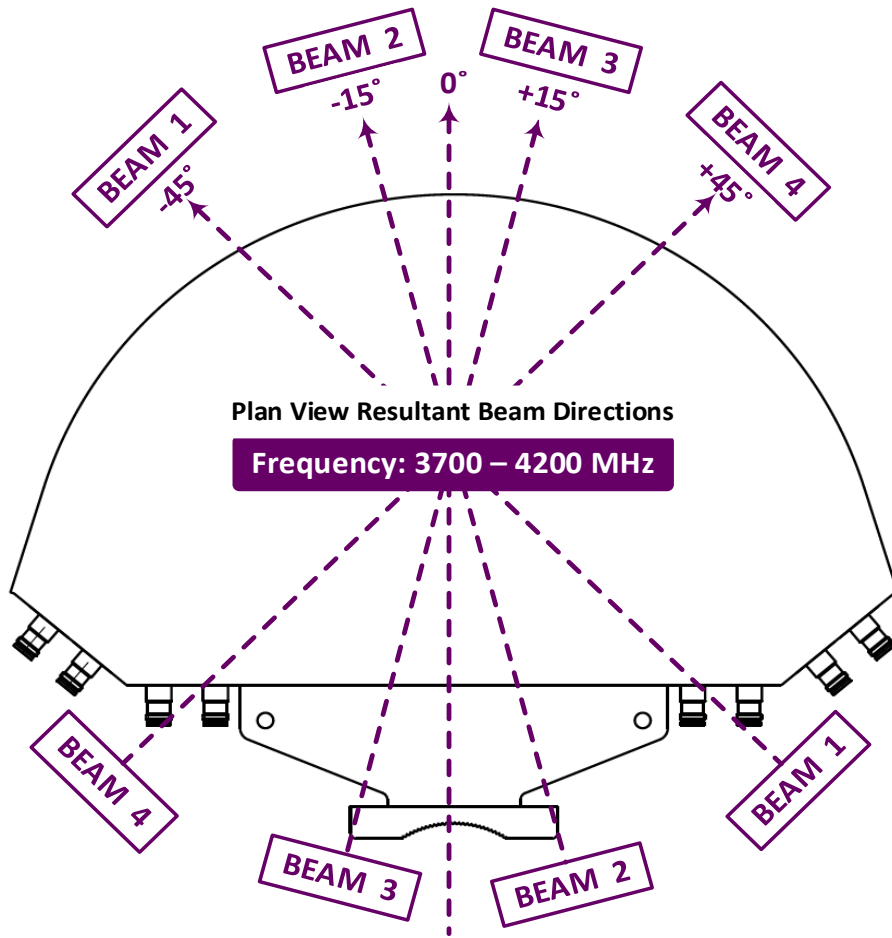
- 3.10 Bolts & Nuts Requirements
 - 3.11 Bolts & Nuts
 - 3.12 Bracket
- 3.20 Tools Requirement
 - 3.21 Adjustable Spanner
 - 3.22 M12 Spanner
- 3.30 Bracket Spacing & Installation Sample

Revision History:

Date	Description	Revised by	Revision nos.

1.00 BEAMS & CONNECTORS:

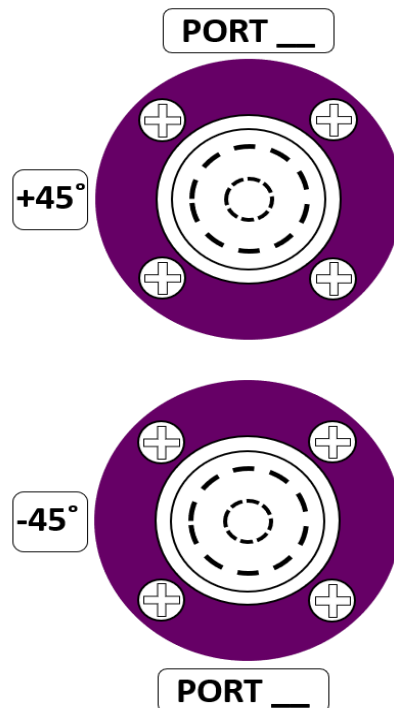
1.10 Plan View Resultant Beam Layout



1.20 Connector Port Table

BEAM 4	BEAM 3	BEAM 2	BEAM 1
Port 25 (+45°)	Port 17 (+45°)	Port 9 (+45°)	Port 1 (+45°)
Port 26 (-45°)	Port 18 (-45°)	Port 10 (-45°)	Port 2 (-45°)
Port 27 (+45°)	Port 19 (+45°)	Port 11 (+45°)	Port 3 (+45°)
Port 28 (-45°)	Port 20 (-45°)	Port 12 (-45°)	Port 4 (-45°)
Port 29 (+45°)	Port 21 (+45°)	Port 13 (+45°)	Port 5 (+45°)
Port 30 (-45°)	Port 22 (-45°)	Port 14 (-45°)	Port 6 (-45°)
Port 31 (+45°)	Port 23 (+45°)	Port 15 (+45°)	Port 7 (+45°)
Port 32 (-45°)	Port 24 (-45°)	Port 16 (-45°)	Port 8 (-45°)

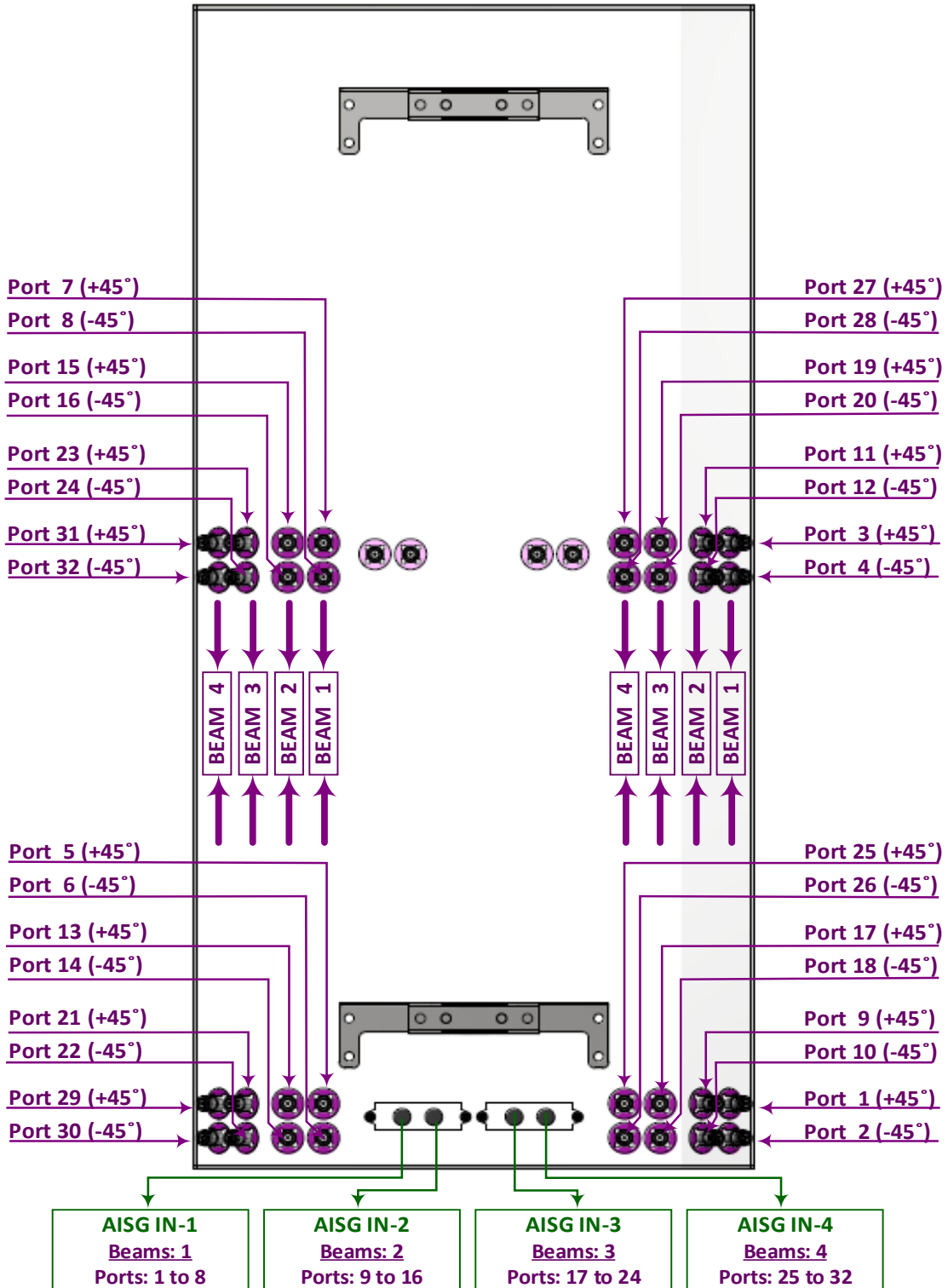
1.30 Connector Detail



1.40 Connector Layout

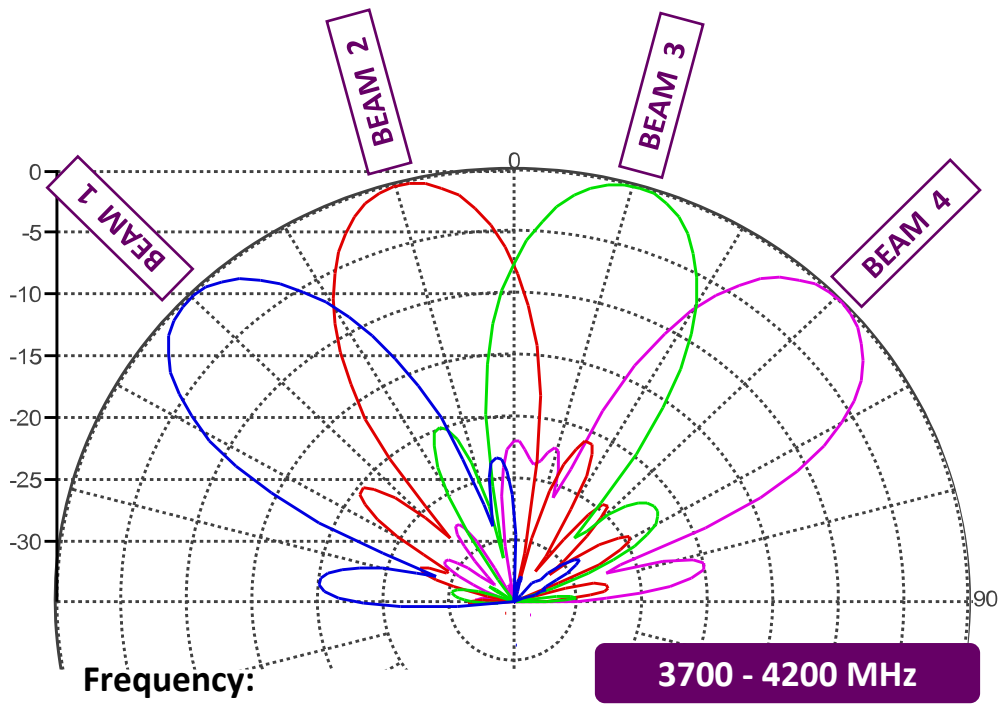
MS-MBA-4-C8A3

REAR VIEW CONNECTOR LAYOUT

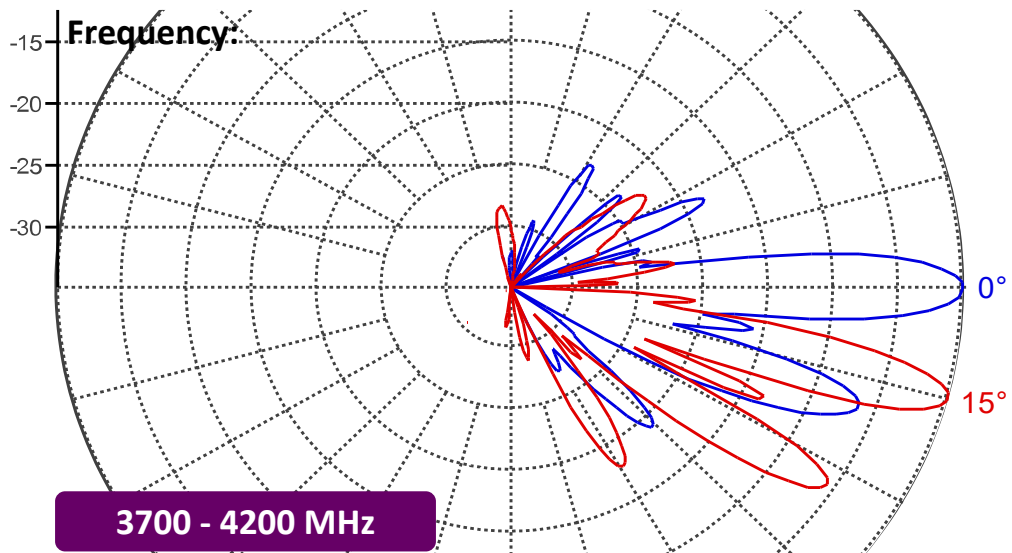


2.00 PATTERN DIAGRAM

2.10 Horizontal Pattern



2.20 Vertical Pattern



3.00 BRACKET INSTALLATION

3.10 Bolts & Nuts Requirements

Bracket	Bolts		Nuts	
	Qty	Size	Qty	Size
2	M12 x 200mm	4	M12	10

3.11 Bolts & Nuts



3.12 Bracket



3.20 Tools Requirement

3.21 Adjustable Spanner



3.22 M12 Spanner



3.30 Bracket Spacing & Installation Sample

