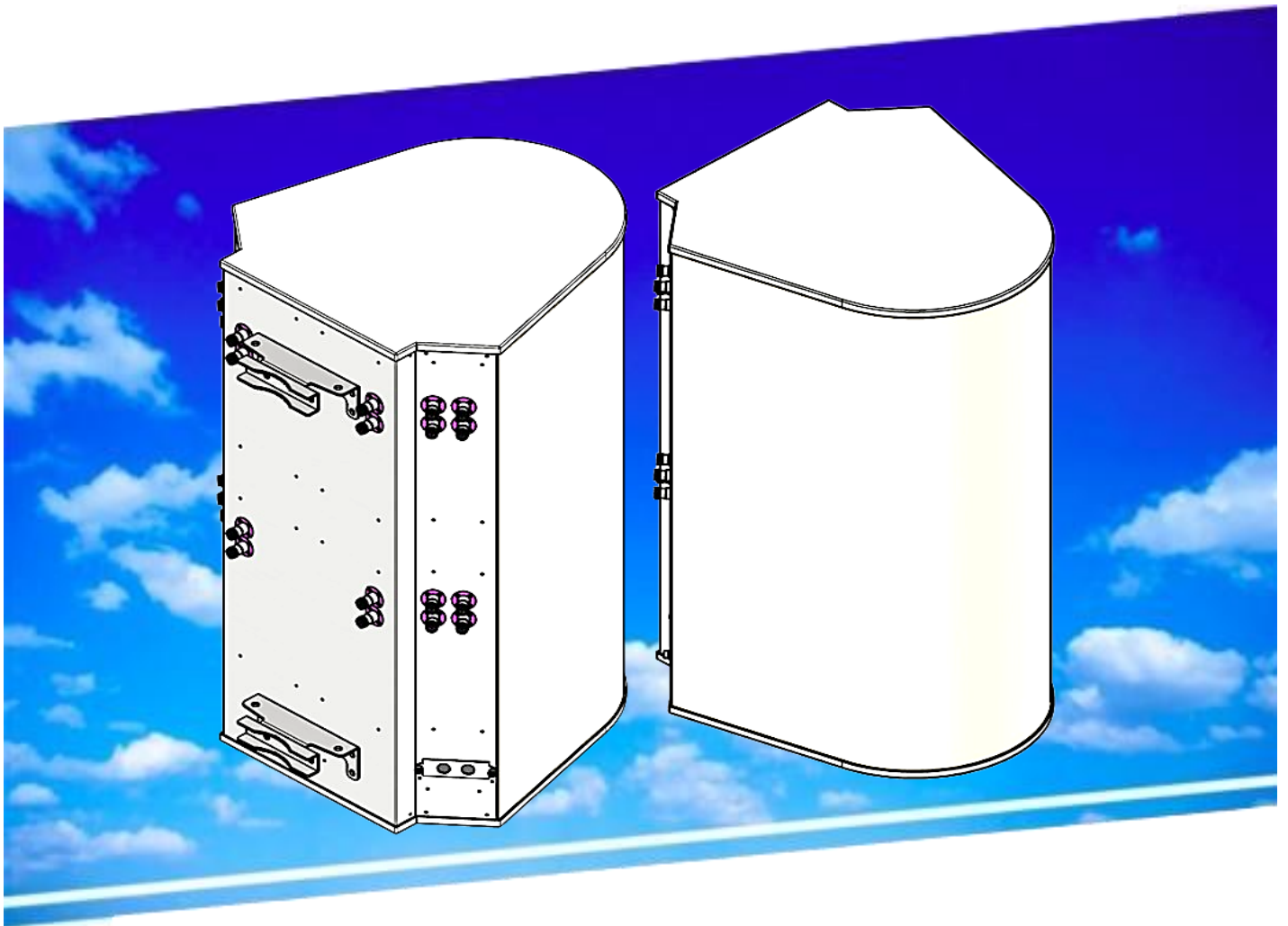


# MATSING<sup>®</sup>

LENS TECHNOLOGY ENABLED

## MS-MBA-6-F4

Instruction Manual



# Table Of Contents

## 1.00 PATTERN DIAGRAM

- 1.10 Horizontal Pattern
- 2.20 Vertical Pattern

## 2.00 BEAMS & CONNECTOR

- 2.10 Plan View Resultant Beam Layout
- 2.20 Connector Detail
- 2.30 Connector Port Table
- 2.40 Rear View Connector Layout

## 3.00 BRACKET INSTALLATION

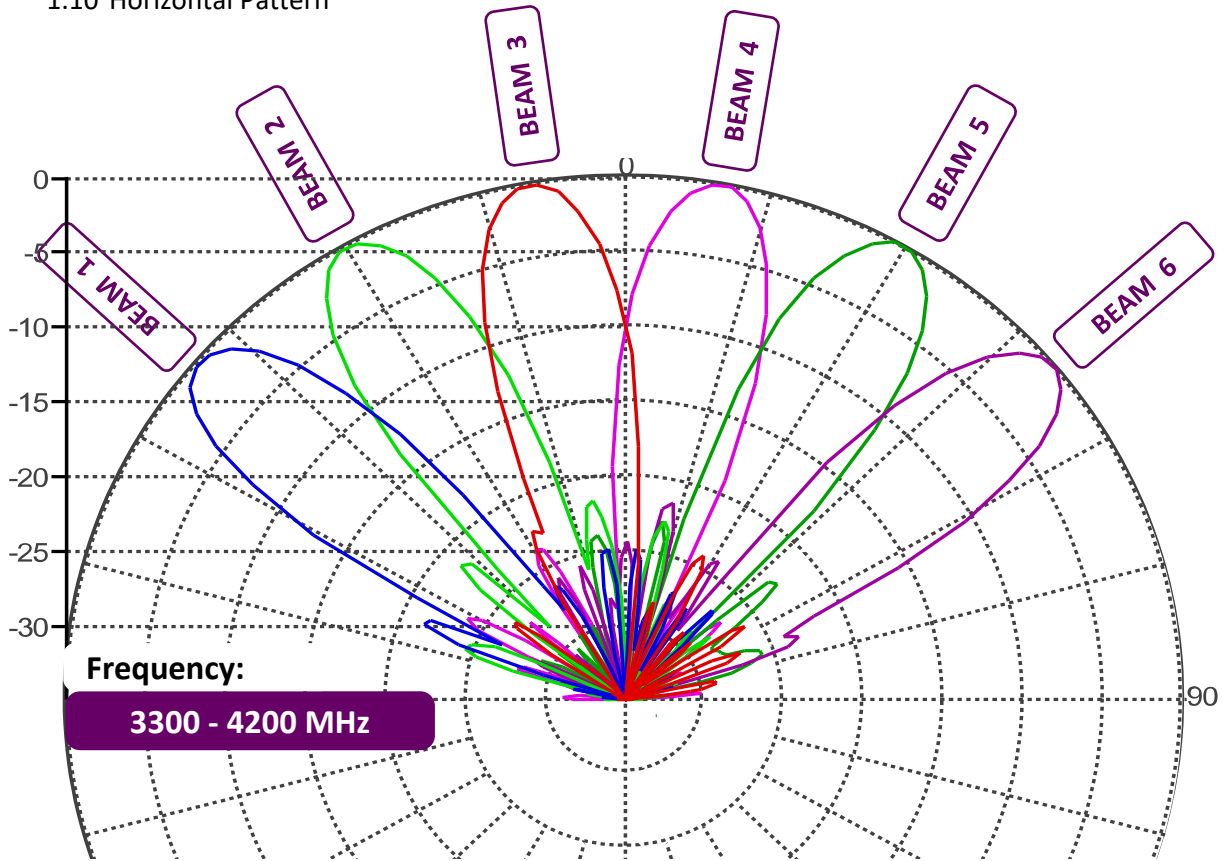
- 3.10 Bolts & Nuts / Tools
  - 3.11 Bolts & Nuts
  - 3.12 Bracket
- 3.20 Tools requirement
  - 3.21 Adjustable spanner
  - 3.22 M12 spanner
- 3.30 Bracket Spacing & Installation Guide

Revision History:

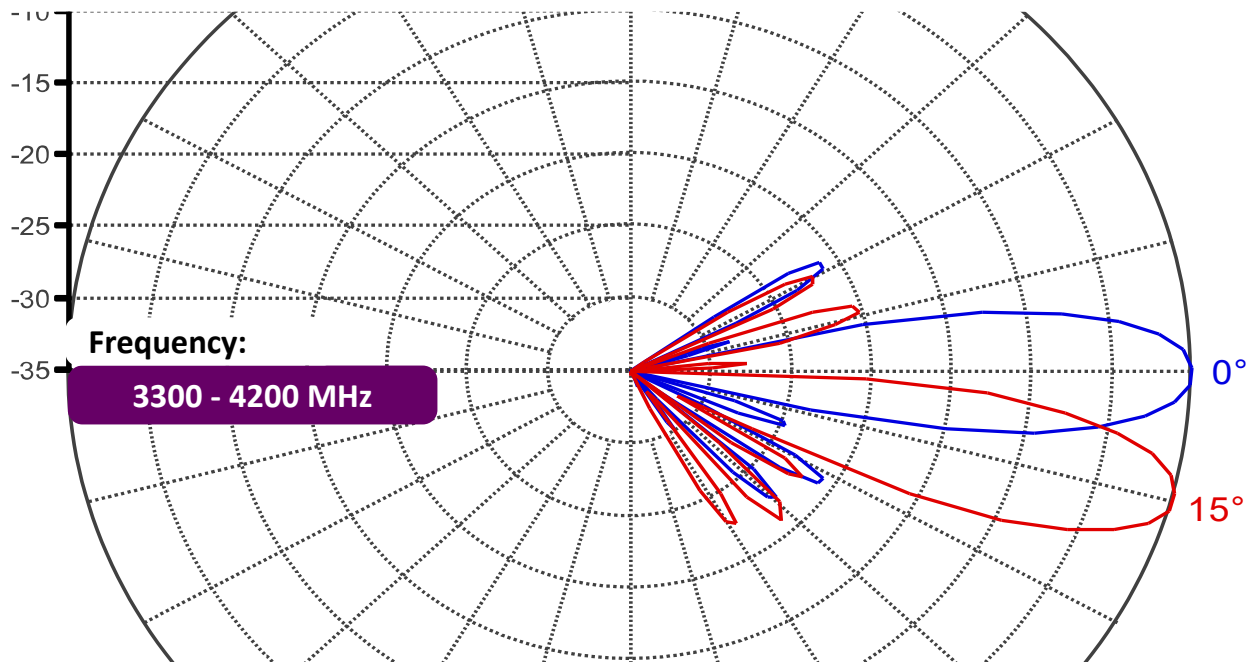
<u>Date</u>	<u>Description</u>	<u>Rev By</u>	<u>Check By</u>	<u>Rev no</u>
11-Nov-2024	Initial Release	RL	Pavel	0

# 1.00 PATTERN DIAGRAM

## 1.10 Horizontal Pattern

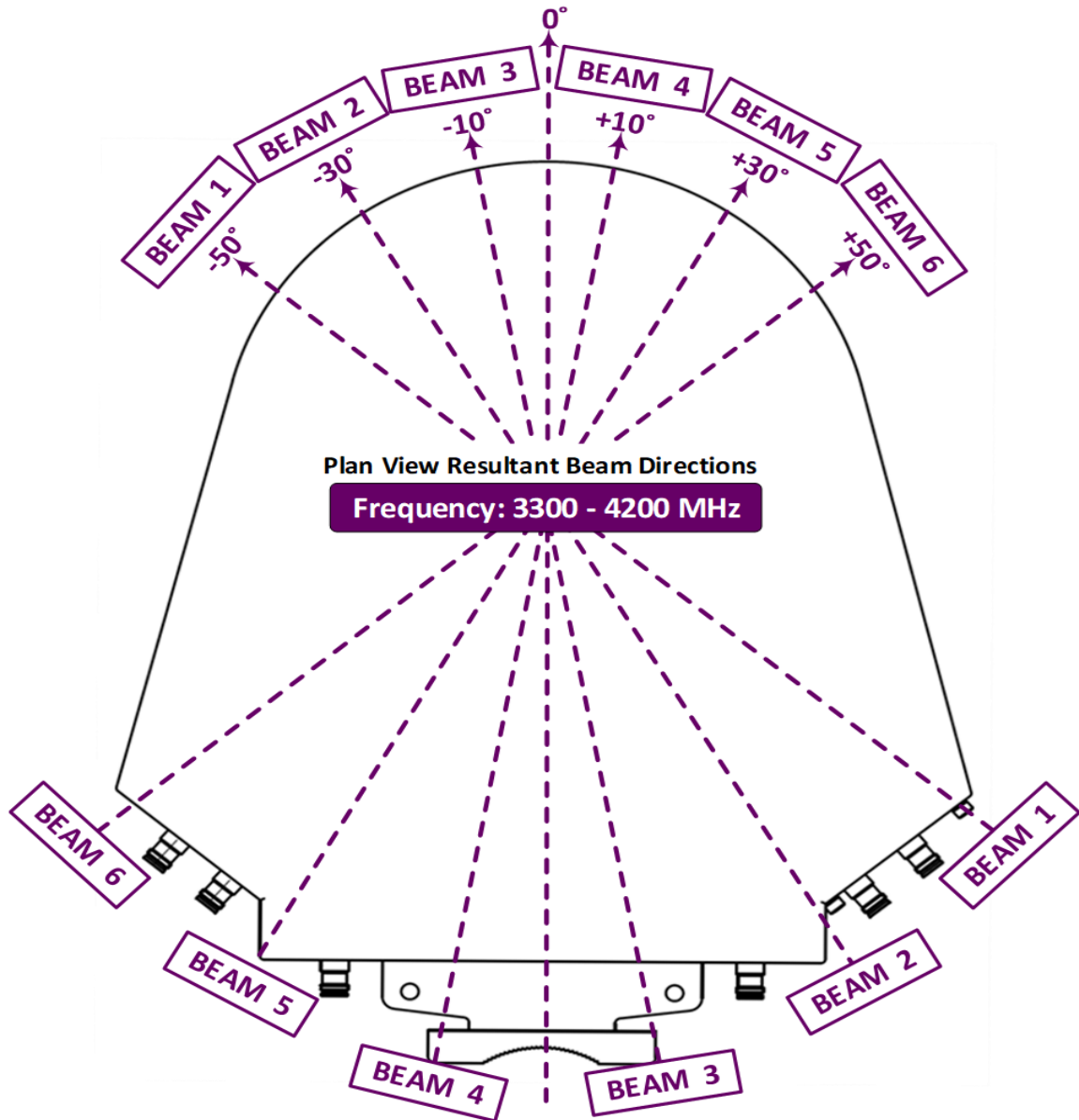


## 2.20 Vertical Pattern

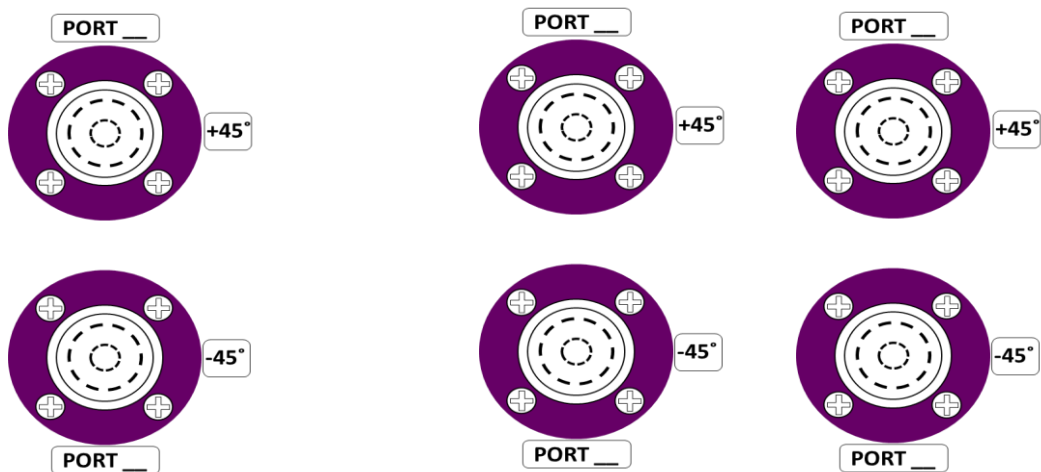


## 2.00 BEAMS & CONNECTOR

### 2.10 Plan View Resultant Beam Layout



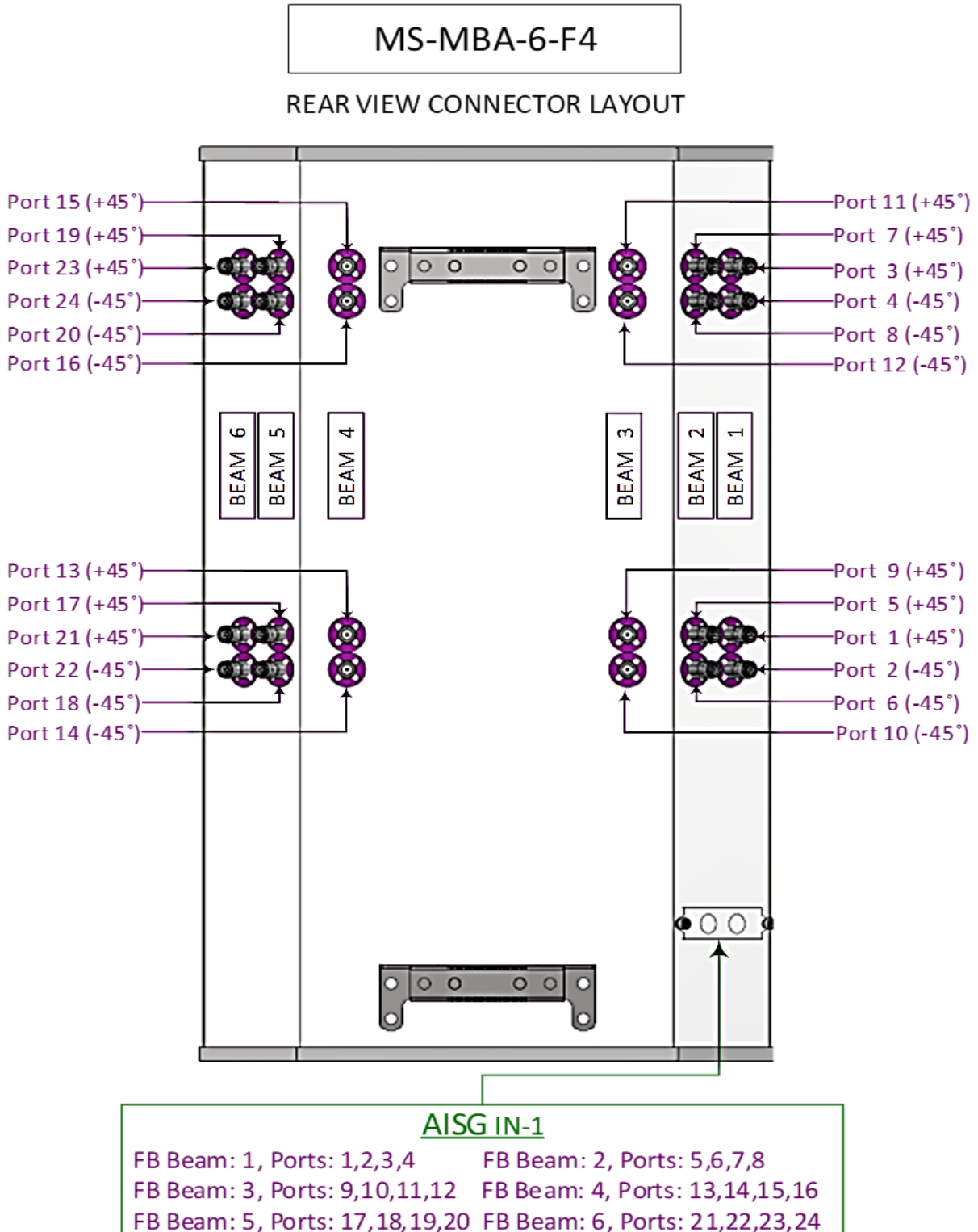
### 2.20 Connector Detail



### 2.30 Connector Port Table

BEAM 6	BEAM 5	BEAM 4	BEAM 3	BEAM 2	BEAM 1
Port 23 (+45°)	Port 19 (+45°)	Port 15 (+45°)	Port 11 (+45°)	Port 7 (+45°)	Port 3 (+45°)
Port 24 (-45°)	Port 20 (-45°)	Port 16 (-45°)	Port 12 (-45°)	Port 8 (-45°)	Port 4 (-45°)
Port 21 (+45°)	Port 17 (+45°)	Port 13 (+45°)	Port 9 (+45°)	Port 5 (+45°)	Port 1 (+45°)
Port 22 (-45°)	Port 18 (-45°)	Port 14 (-45°)	Port 10 (-45°)	Port 6 (-45°)	Port 2 (-45°)

### 2.40 Rear View Connector Layout



### 3.00 BRACKET INSTALLATION

3.10 Bolts & Nuts / Tools

3.11 Bolts & Nuts



Bracket Qty	Bolts		Nuts	
	Size	Qty	Size	Qty
2	M12 x 200mm	4	M12	10

3.12 Bracket



3.20 Tools requirement

3.21 Adjustable spanner



3.22 M12 spanner



3.30 Bracket Spacing & Installation Guide

