

MATSING[®]

LENS TECHNOLOGY ENABLED

MS-MBA-6.3-H4-L4

Instruction Manual

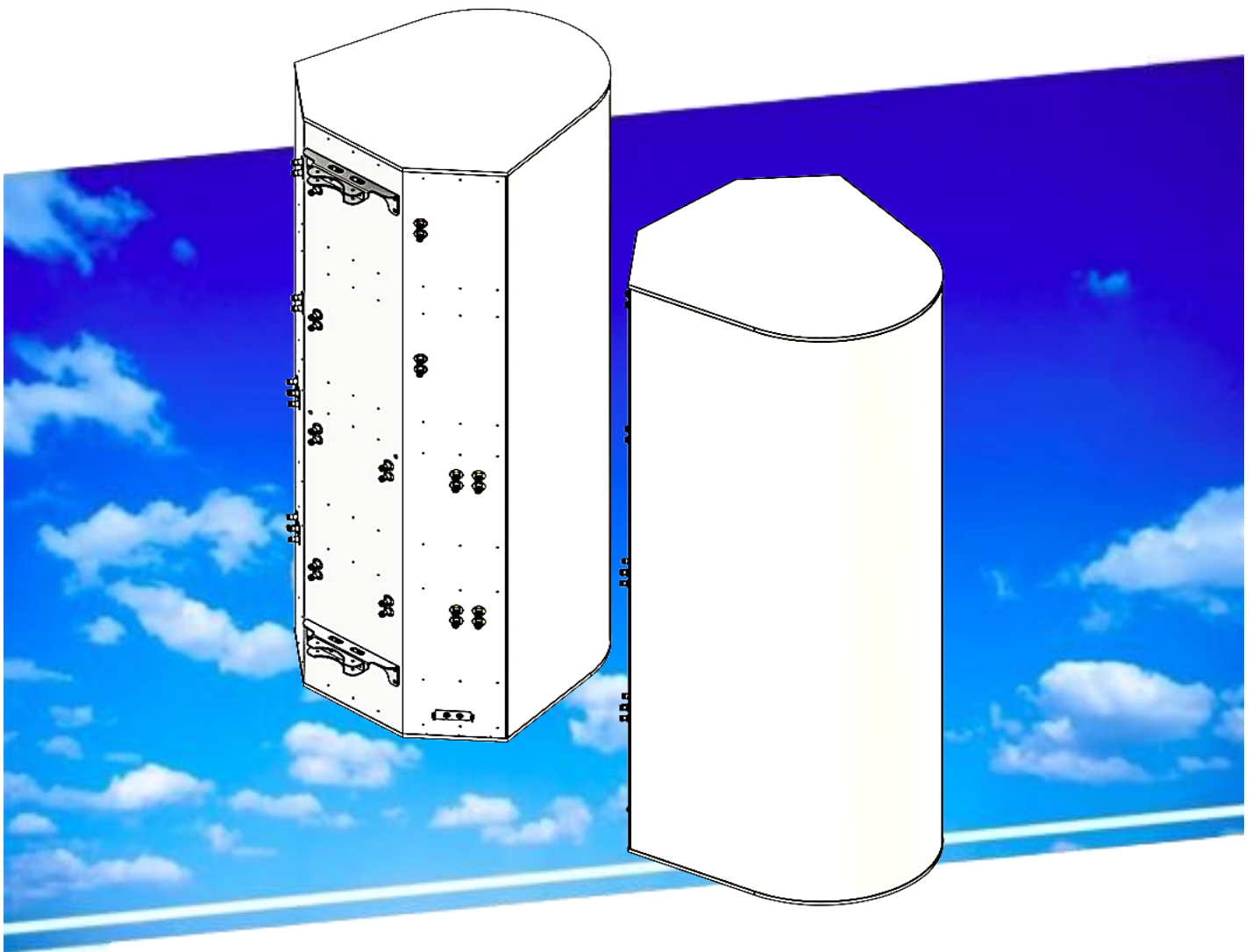


Table Of Contents

1.00 BEAMS & CONNECTORS:

- 1.10 Plan View Resultant Beam Layout
- 1.20 Rear View Connector Layout
- 1.30 Connector Port Table

2.00 PATTERN DIAGRAM

- 2.10 H-BAND Horizontal Pattern
- 2.20 H-BAND Vertical Pattern
- 2.30 L-BAND Horizontal Pattern
- 2.40 L-BAND Vertical Pattern

3.00 BRACKET INSTALLATION

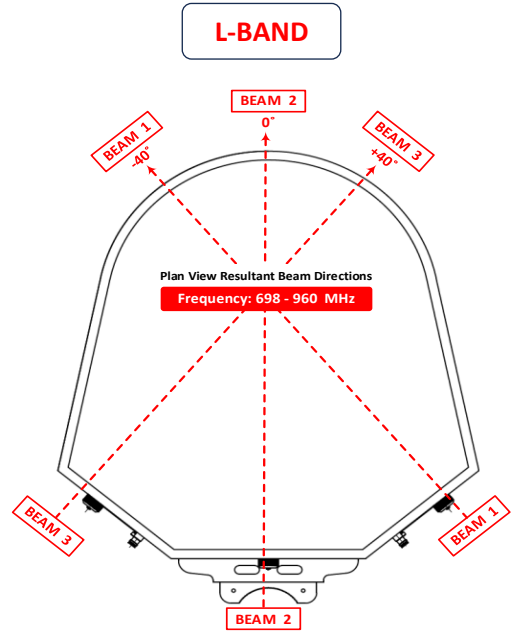
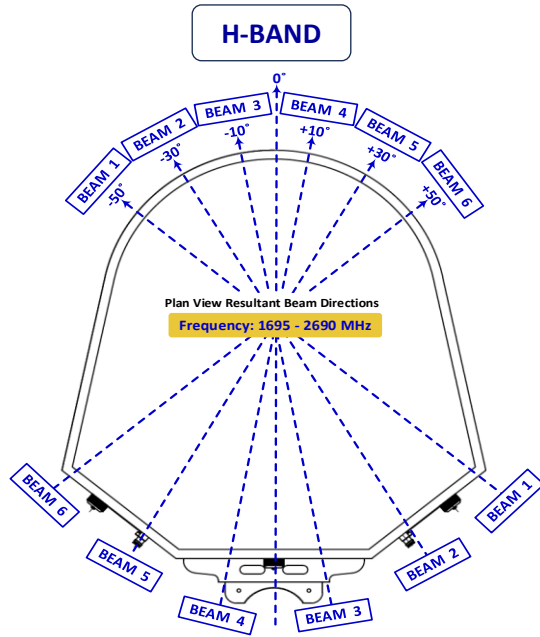
- 3.10 Bolts & Nuts / Tools
 - 3.11 M12 Spanner
 - 3.12 Adjustable Spanner
 - 3.13 Bolts & Nuts
 - 3.14 Brackets
- 3.20 Bracket Spacing & Installation Guide

Revision History:

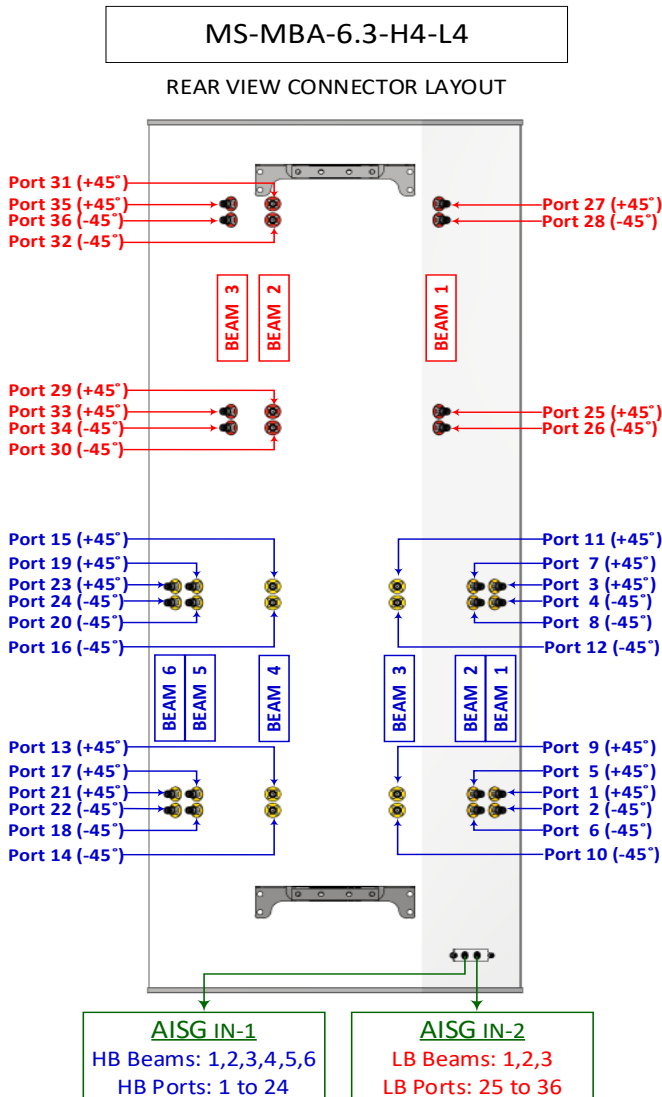
<u>Date</u>	<u>Description</u>	<u>Revised By</u>	<u>Revision Nos</u>
31-May-2024	Initial Release	RL	0

1.00 BEAMS & CONNECTORS:

1.10 Plan View Resultant Beam Layout



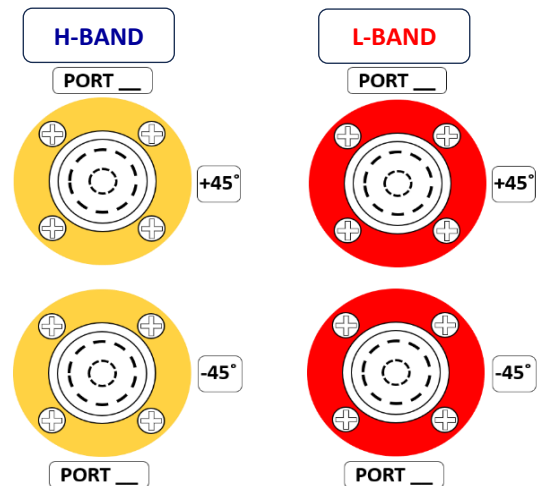
1.20 Rear View Connector Layout



1.30 Connector Port Table

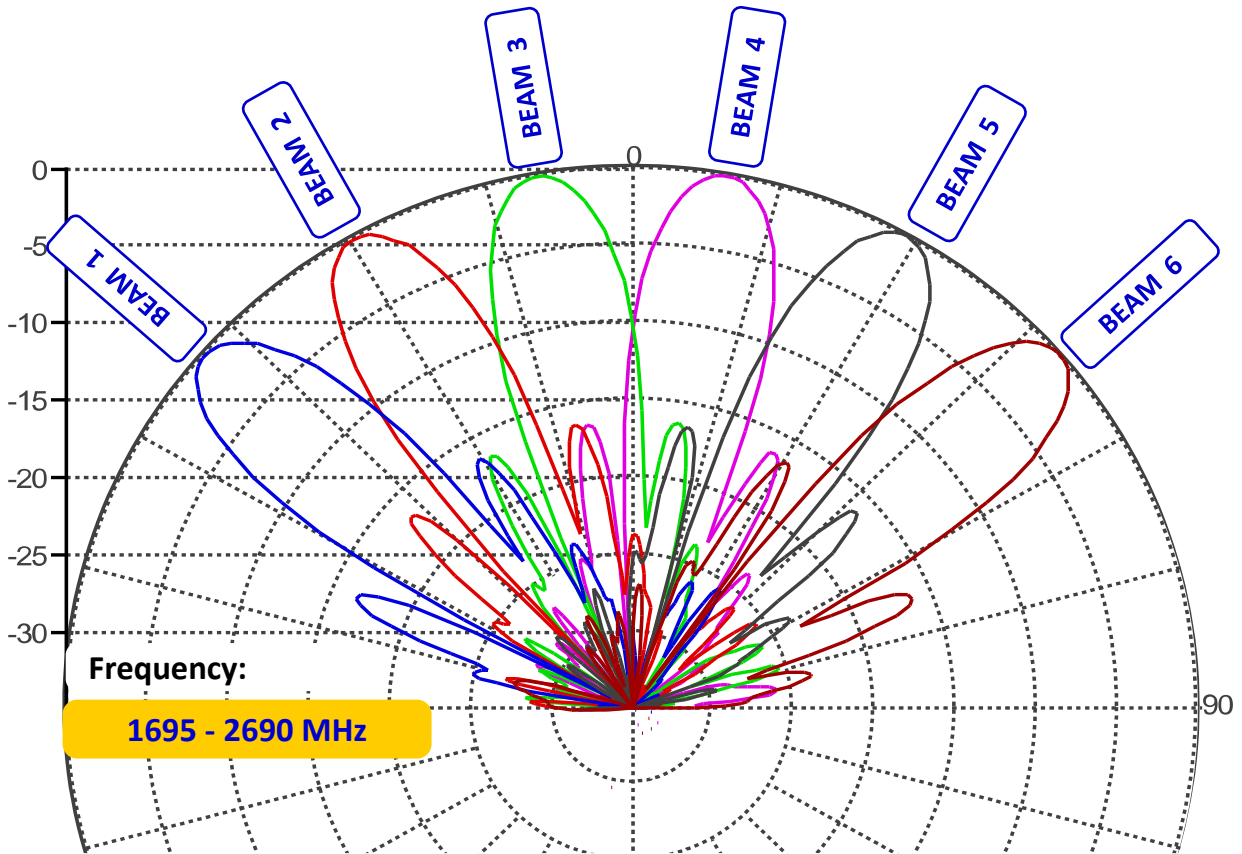
BEAM 3		BEAM 2		BEAM 1	
Port 35 (+45°)		Port 31 (+45°)		Port 27 (+45°)	
Port 36 (-45°)		Port 32 (-45°)		Port 28 (-45°)	
Port 33 (+45°)		Port 29 (+45°)		Port 25 (+45°)	
Port 34 (-45°)		Port 30 (-45°)		Port 26 (-45°)	
BEAM 6	BEAM 5	BEAM 4	BEAM 3	BEAM 2	BEAM 1
Port 23 (+45°)	Port 19 (+45°)	Port 15 (+45°)	Port 11 (+45°)	Port 7 (+45°)	Port 3 (+45°)
Port 24 (-45°)	Port 20 (-45°)	Port 16 (-45°)	Port 12 (-45°)	Port 8 (-45°)	Port 4 (-45°)
Port 21 (+45°)	Port 17 (+45°)	Port 13 (+45°)	Port 9 (+45°)	Port 5 (+45°)	Port 1 (+45°)
Port 22 (-45°)	Port 18 (-45°)	Port 14 (-45°)	Port 10 (-45°)	Port 6 (-45°)	Port 2 (-45°)

1.40 Connector Detail

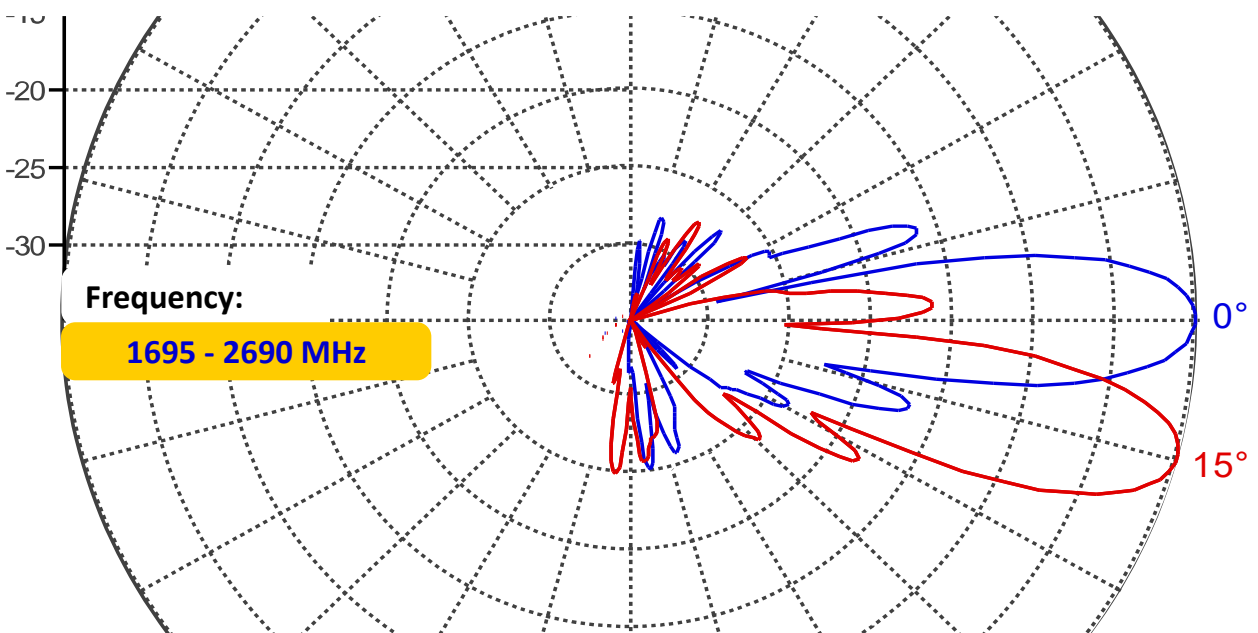


2.00 PATTERN DIAGRAM

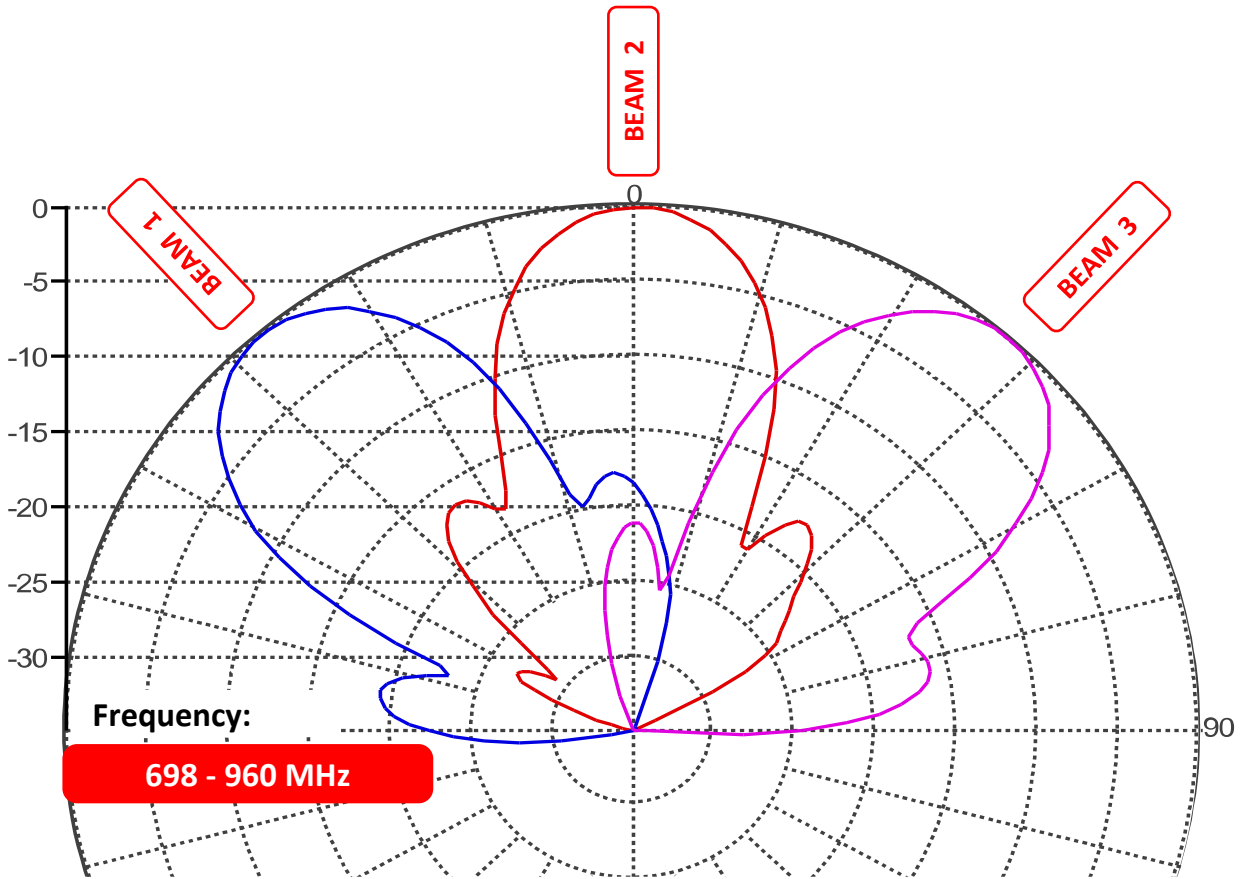
2.10 H-BAND Horizontal Pattern



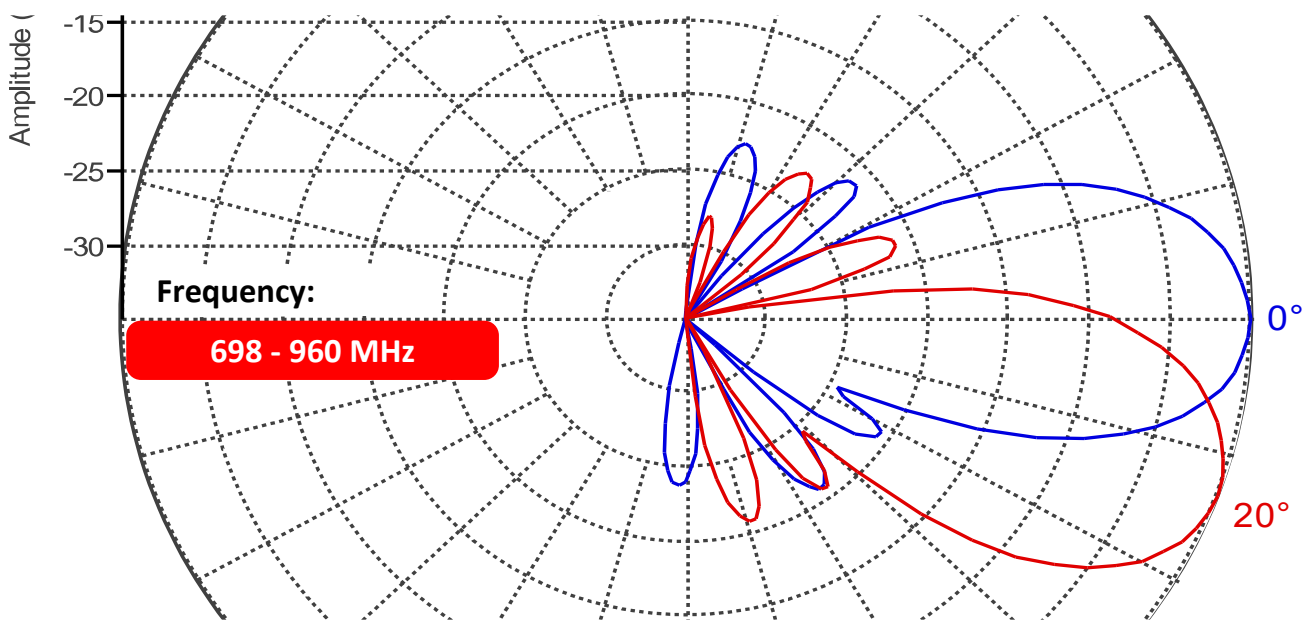
2.20 H-BAND Vertical Pattern



2.30 L-BAND Horizontal Pattern



2.40 L-BAND Vertical Pattern



3.00 BRACKET INSTALLATION

3.10 Bolts & Nuts / Tools

Bracket Qty	Bolts		Nuts	
	Size	Qty	Size	Qty
2	M12 x 200mm	4	M12	8

3.11 M12 Spanner



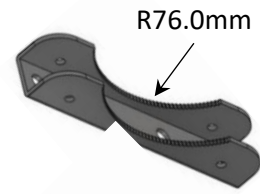
3.13 Bolts & Nuts



3.12 Adjustable Spanner



3.14 Brackets



3.20 Bracket Spacing & Installation Guide

