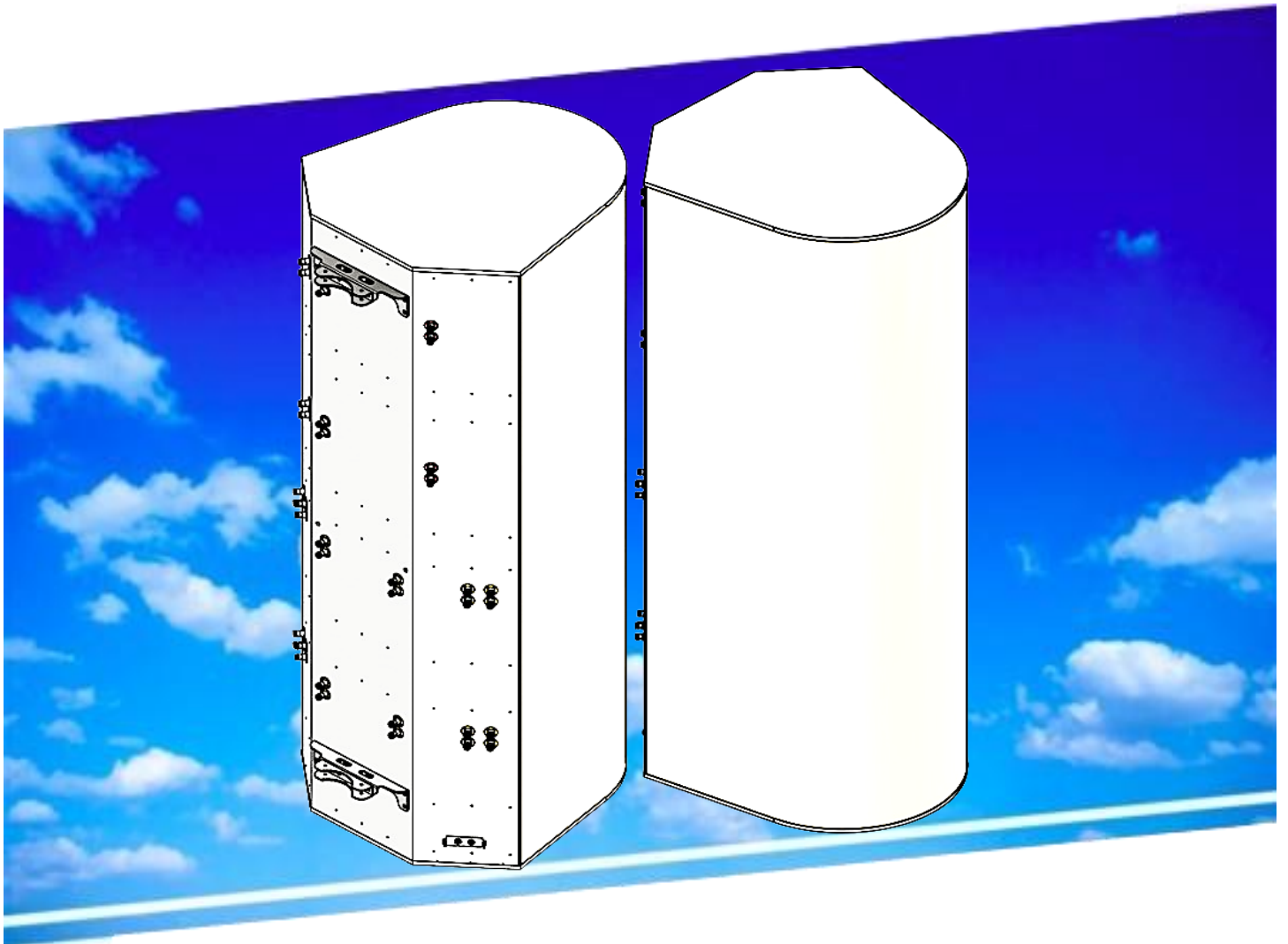


# MATSING<sup>®</sup>

LENS TECHNOLOGY ENABLED

## MS-MBA-6.3-H4-T4

Instruction Manual



# Table Of Contents

## 1.00 Beams and connectors

- 1.10 Plan view resultant beam layout
- 1.20 Connector port table
- 1.30 Connector detail
- 1.40 Connector layout

## 2.00 Pattern diagram

- 2.10 H-Band
  - 2.11 Horizontal pattern
  - 2.12 Vertical pattern
- 2.20 T-Band
  - 2.21 Horizontal pattern
  - 2.22 Vertical pattern

## 3.00 Bracket installation

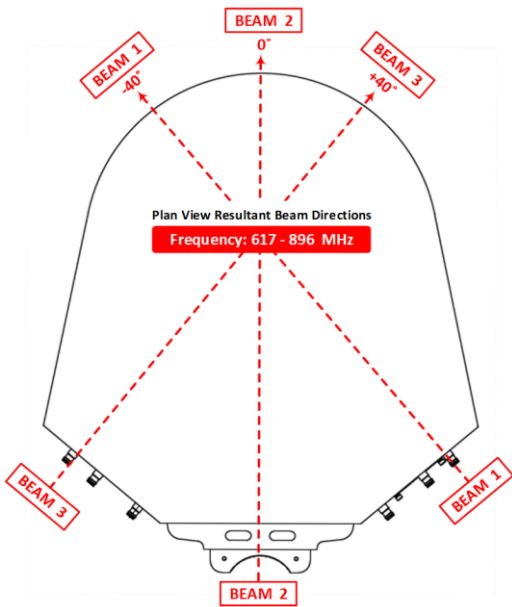
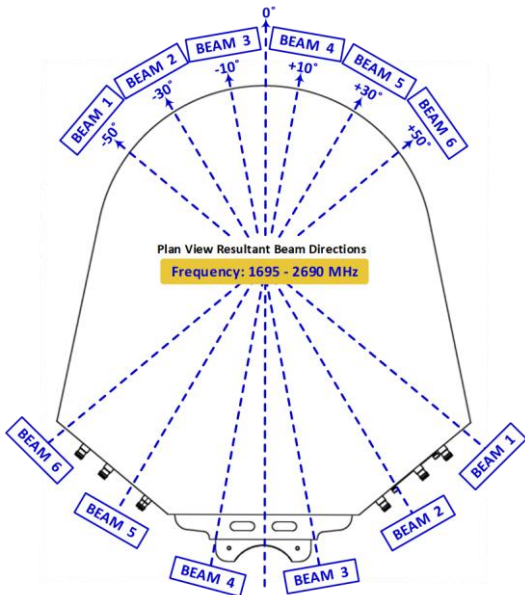
- 3.10 Bolts and nuts / tools
  - 3.11 Bolt and nuts set
  - 3.12 Bracket
- 3.20 Tools requirement
- 3.30 Bracket spacing & installation guide

Revision History:

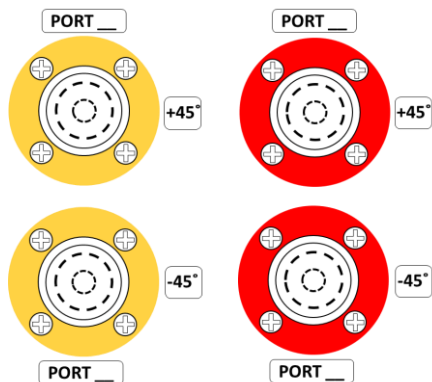
<u>Date</u>	<u>Description</u>	<u>Rev By</u>	<u>Check By</u>	<u>Rev no</u>
13-Mar-2025	Initial Release	RL	Pavel	0

# 1.00 Beams and connectors

## 1.10 Plan view resultant beam layout



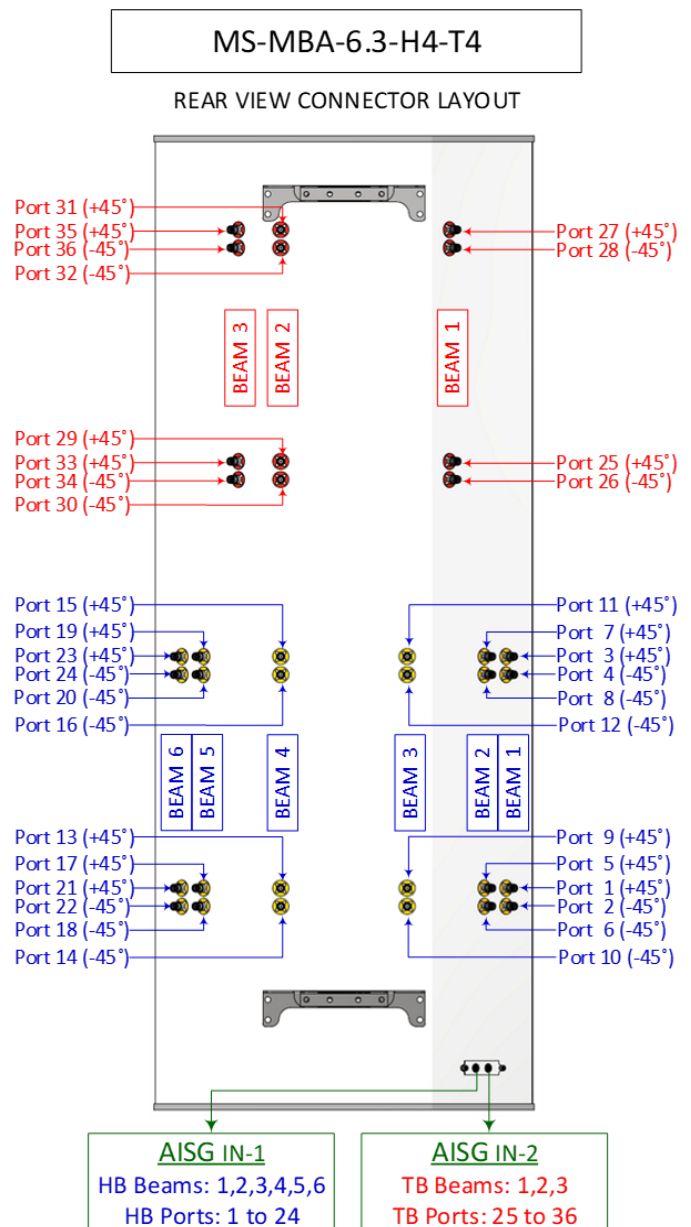
## 1.30 Connector detail



## 1.20 Connector port table

BEAM 3		BEAM 2		BEAM 1	
Port 35 (+45°)		Port 31 (+45°)		Port 27 (+45°)	
Port 36 (-45°)		Port 32 (-45°)		Port 28 (-45°)	
Port 33 (+45°)		Port 29 (+45°)		Port 25 (+45°)	
Port 34 (-45°)		Port 30 (-45°)		Port 26 (-45°)	
BEAM 6	BEAM 5	BEAM 4	BEAM 3	BEAM 2	BEAM 1
Port 23 (+45°)	Port 19 (+45°)	Port 15 (+45°)	Port 11 (+45°)	Port 7 (+45°)	Port 3 (+45°)
Port 24 (-45°)	Port 20 (-45°)	Port 16 (-45°)	Port 12 (-45°)	Port 8 (-45°)	Port 4 (-45°)
Port 21 (+45°)	Port 17 (+45°)	Port 13 (+45°)	Port 9 (+45°)	Port 5 (+45°)	Port 1 (+45°)
Port 22 (-45°)	Port 18 (-45°)	Port 14 (-45°)	Port 10 (-45°)	Port 6 (-45°)	Port 2 (-45°)

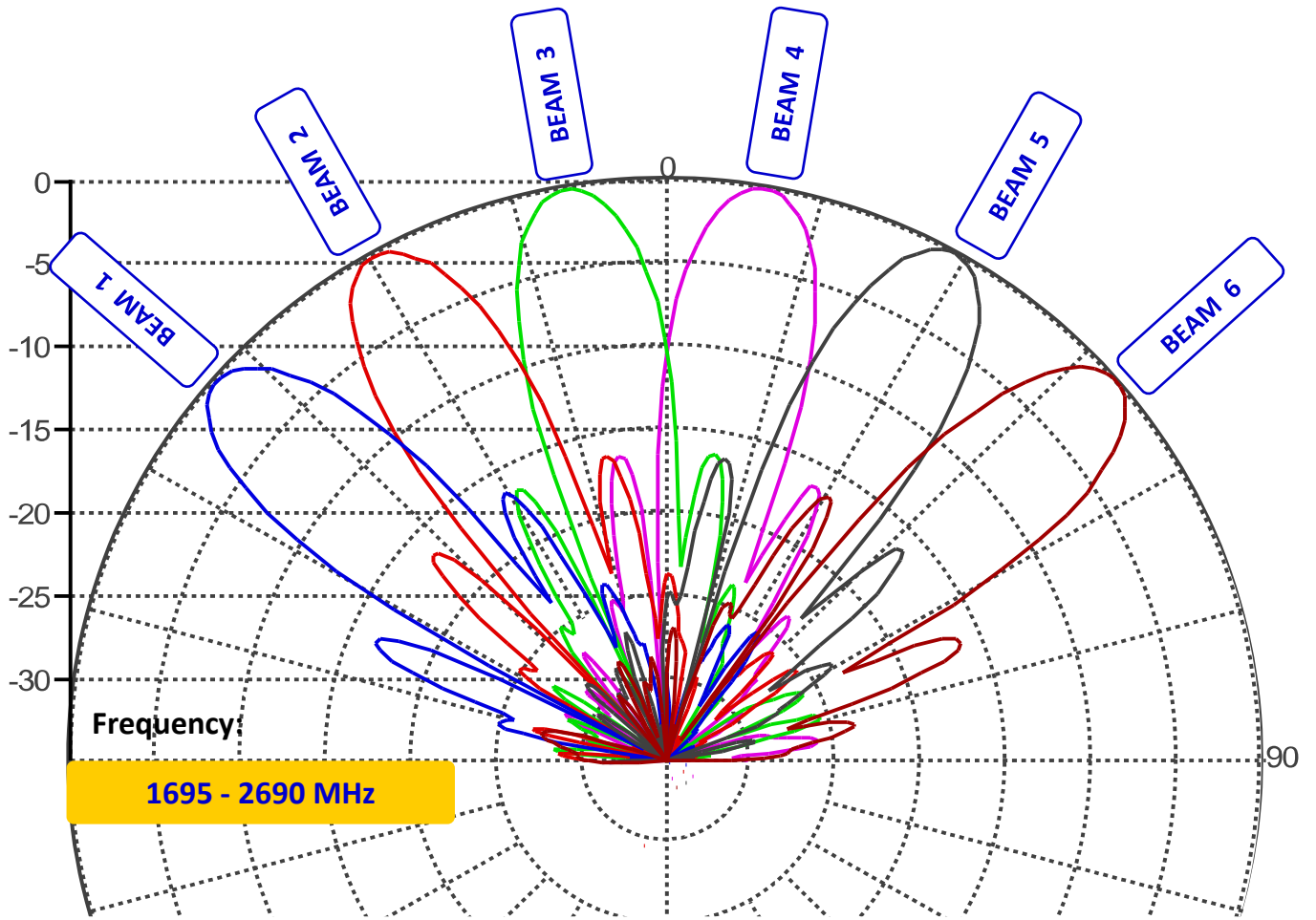
## 1.40 Connector layout



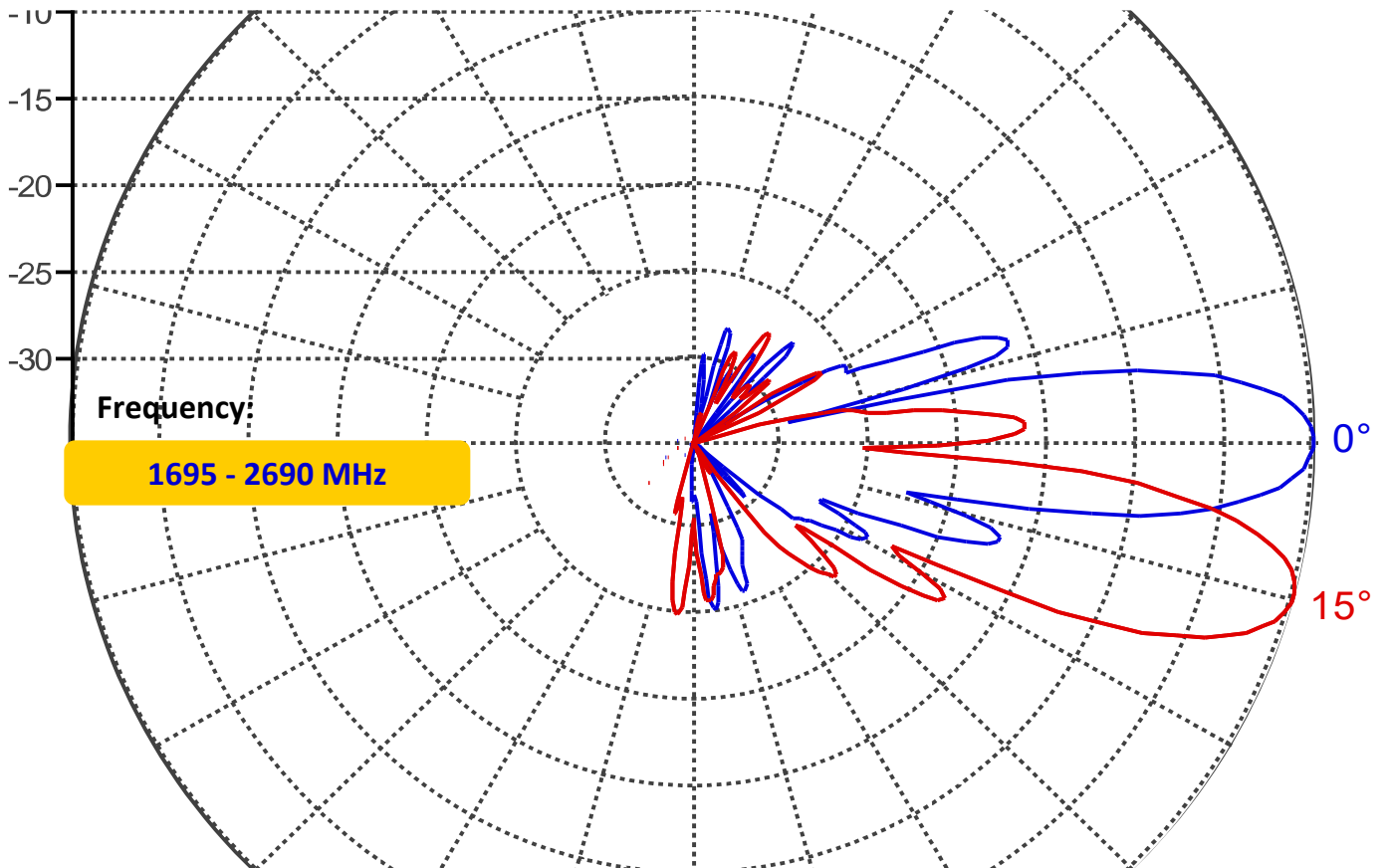
## 2.00 Pattern diagram

2.10 H-Band

2.11 Horizontal pattern

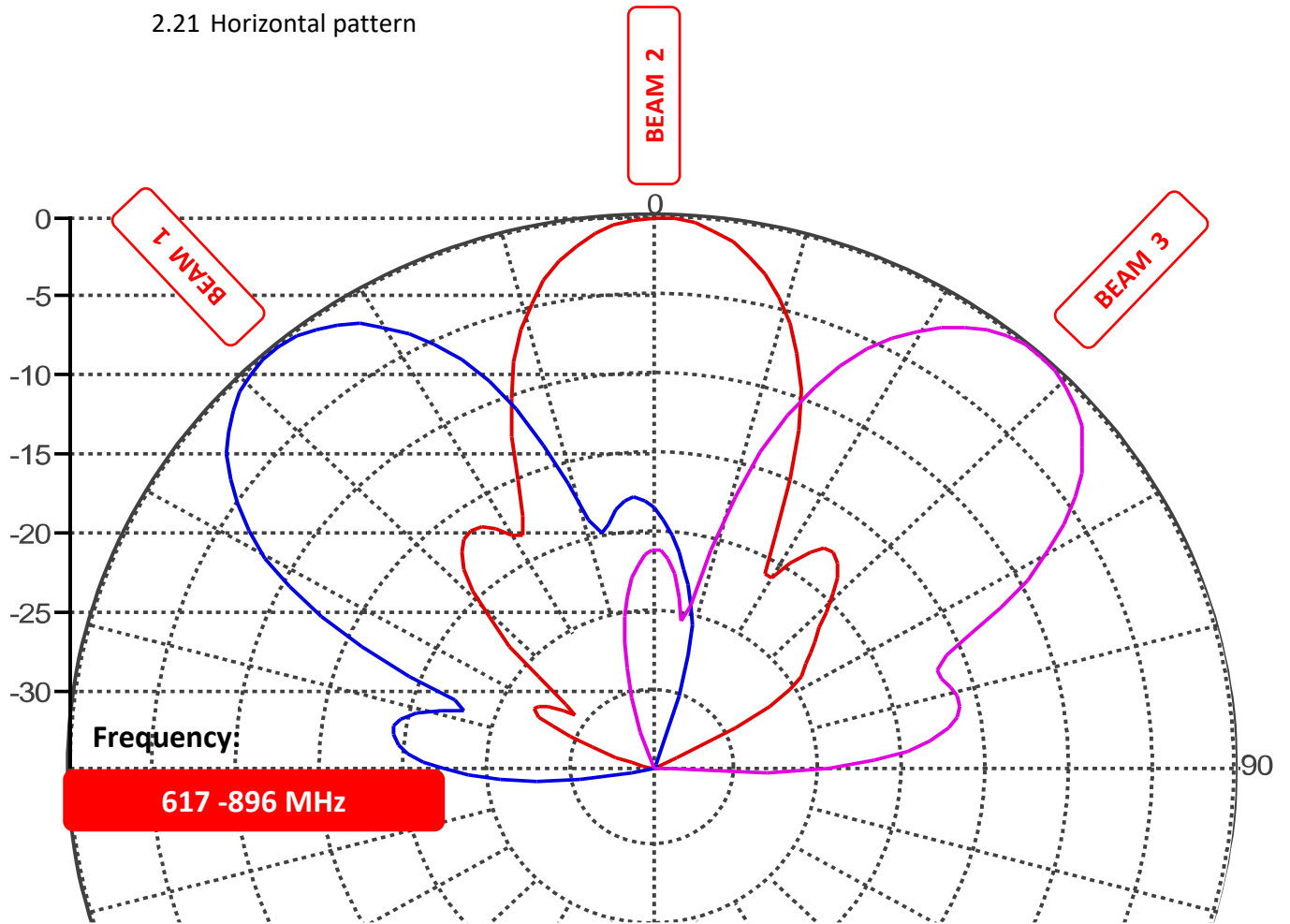


2.12 Vertical pattern

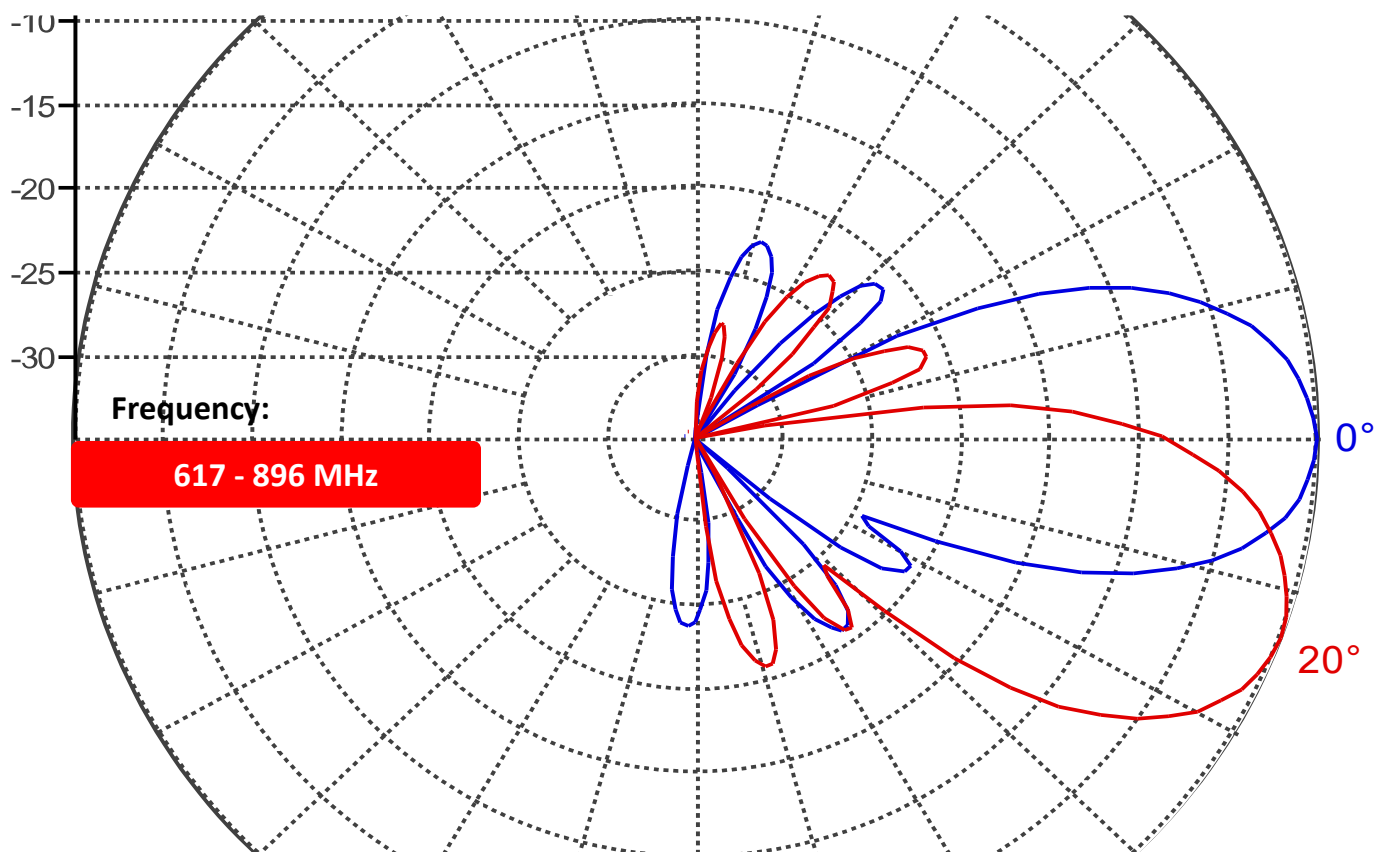


2.20 T-Band

2.21 Horizontal pattern



2.22 Vertical pattern



### 3.00 Bracket installation

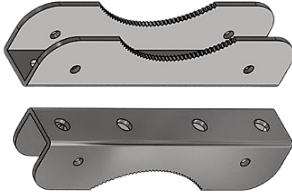
3.10 Bolts and nuts / tools

3.11 Bolt and nuts set



Bracket	Bolts		Nuts	
Qty	Size	Qty	Size	Qty
2	M12 x 200mm	4	M12	10

3.12 Bracket



3.20 Tools requirement

Adjustable spanner



M12 spanner



3.30 Bracket spacing & installation guide

