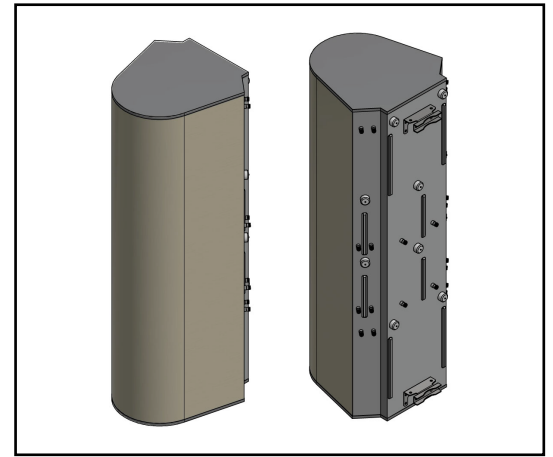


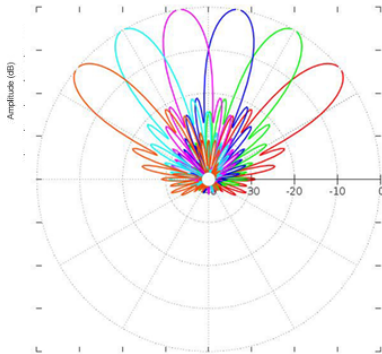
MS-MBA-6.6.3-C4-H4-L2

Lens Technology Enabled™ Multi-Beam Tri Band Base-Station Antenna utilizes a patented spherical lens design with 6 isolated C-Band (3700MHz – 4200MHz) cross-polarized beams, 6 isolated High Band (1695MHz – 2690MHz) cross-polarized beams and 3 isolated Low Band (698MHz – 960MHz) beams, each C & H Band beams have 4 ports to support 4X4 MIMO. Each L-Band beam has 2 ports to support 2x2 MIMO. RET for C Band & High Band Beams 0°-15°. RET for Low Band Beams 0°-20°.

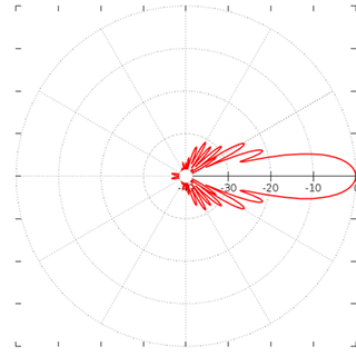


PATTERN RESULTS:

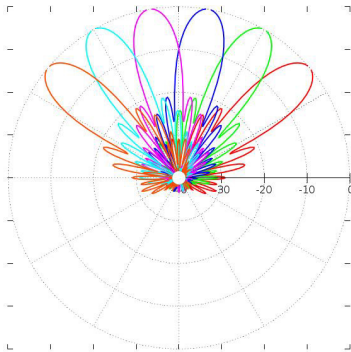
C-Band Horizontal Pattern (3.5GHz)



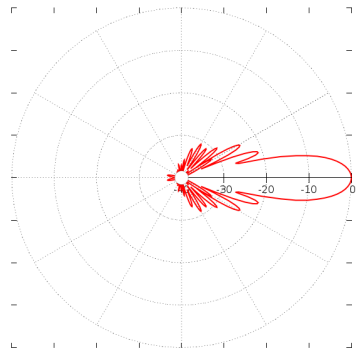
C-Band Vertical pattern (3.5GHz) at tilt 0° and 15°



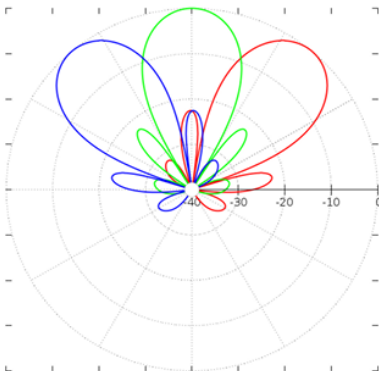
High-Band Horizontal Pattern (1.92GHz)



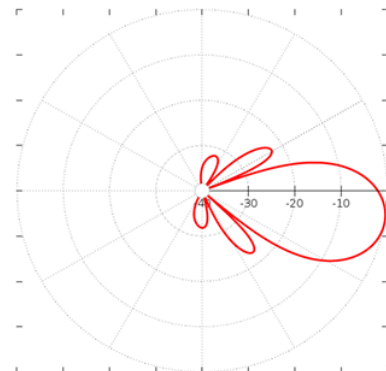
High-band Vertical Pattern (1.92GHz) at tilt 0° and 15°



Low-band Horizontal Pattern (0.8GHz)



Low-band Vertical Pattern (0.8GHz) at tilt 0° and 20°



TECHNICAL SPECIFICATIONS PER BEAM

	3700 - 4200 MHz	1695 - 2690 MHz	698 - 960 MHz
Frequency	3700 - 4200 MHz	1695 - 2690 MHz	698 - 960 MHz
Gain	21.5dBi	22dBi	16dBi
VSWR	<1.5:1	<1.5:1	<1.5:1
Polarization	Dual Slant ±45°	Dual Slant ±45°	Dual Slant ±45°
Horizontal Coverage	120°	120°	120°
Horizontal Beamwidth (10dB)	21°	20°	41°
Horizontal Beamwidth (3dB)	12°	11°	24°
Vertical Beamwidth (10dB)	22°	22°	41°
Vertical Beamwidth (3dB)	13°	13°	24°
Beam Cross-over	10dB typical	10dB typical	10dB typical
Total Number of Beams	6	6	3
Number of Ports per Beam	4	4	2
Number of Ports Total	24	24	6
Tilt Per Cross-Pol; Remote Electrical Tilt (AISG 2.0)	0° - 15°	0° - 15°	0° - 20°
First Sidelobe Level	<-16dB	<-16dB	<-15dB
Front to Back Ratio	>28dB	>28dB	>28dB
Isolation Port to Port - Polarization	>28dB	>28dB	>28dB
Isolation Port to Port - Beam	>28dB	>28dB	>26dB
Power Rating	200W per port	200W per port	250W per port
Intermodulation	<-153dBc	<-153dBc	<-153dBc
Impedance	50 ohm	50 ohm	50 ohm
Connector Quantity and Type	24 x 4.3-10 female	24 x 4.3-10 female	6 x 4.3-10 female

MECHANICAL DATA

Dimensions (H x W x D)	241.8 x 93.4 x 108.4 cm 95.2 x 36.8 x 42.7 inch
Antenna Weight	105 kg 231 lbs
Radome Material	Fiber Glass
Mounting	Standard pipe mount Compatible pipe diameter: 6.1 – 11.4 cm 2.4 – 4.5 inch

ENVIRONMENTAL RATINGS

Humidity	95% RH @ +30°C
Temperature	-40°C to +70°C
Wind load @150km/hr	N/lbf Frontal: 1445/324.9 Lateral: 2037/458 Rear: 2399/539.3

CONNECTOR LAYOUT

