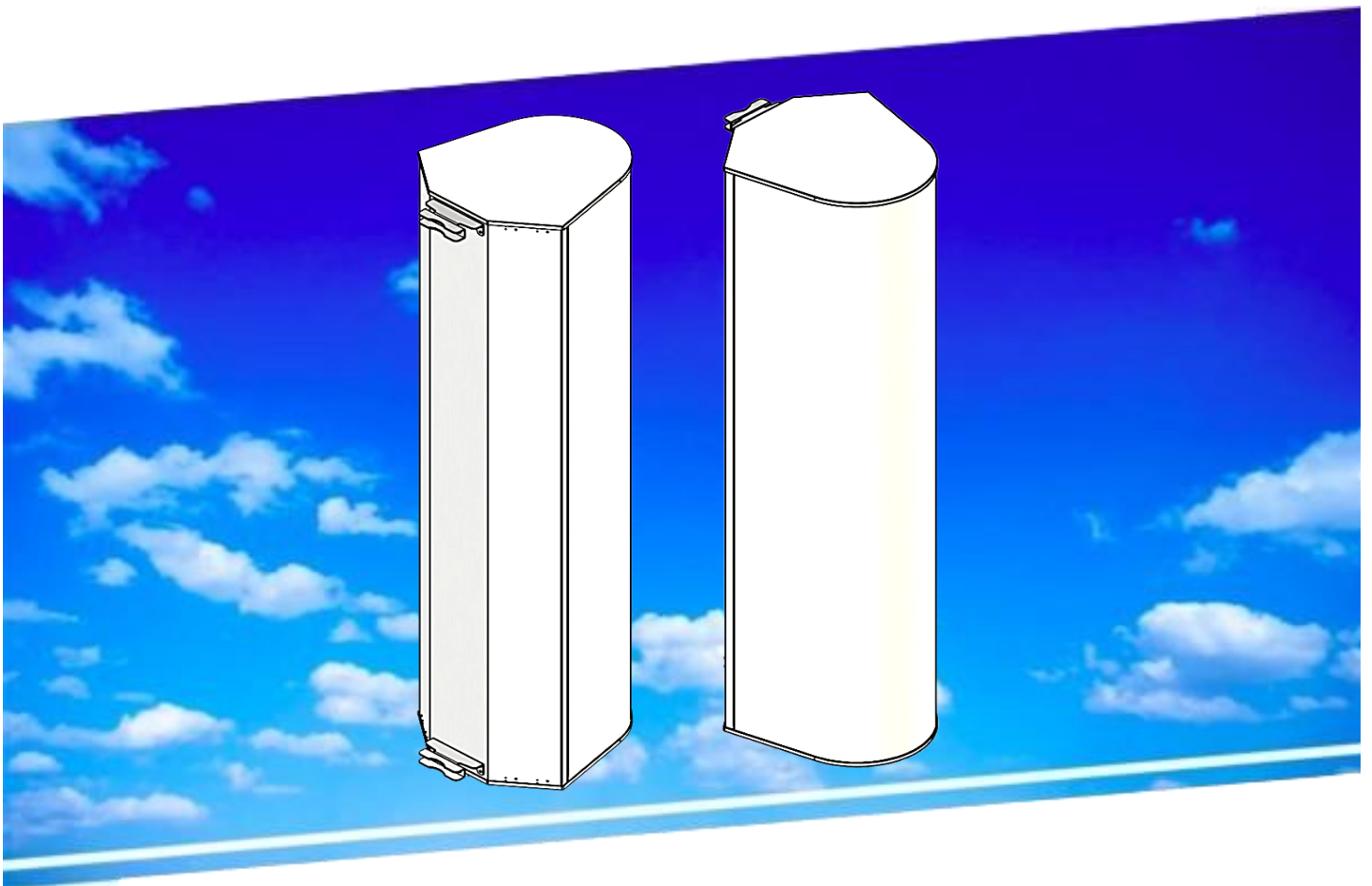


# **MATSING**<sup>®</sup>

LENS TECHNOLOGY ENABLED

## **MS-MBC-2-L4-15**

Instruction Manual



# Table of Contents

## 1.00 Pattern diagram

- 1.10 Horizontal pattern
- 1.20 Vertical pattern

## 2.00 Beams and connectors

- 2.10 Plan view resultant beam layout
- 2.20 Connector port table
- 2.30 Connector detail
- 2.40 Connector layout

## 3.00 Bracket installation

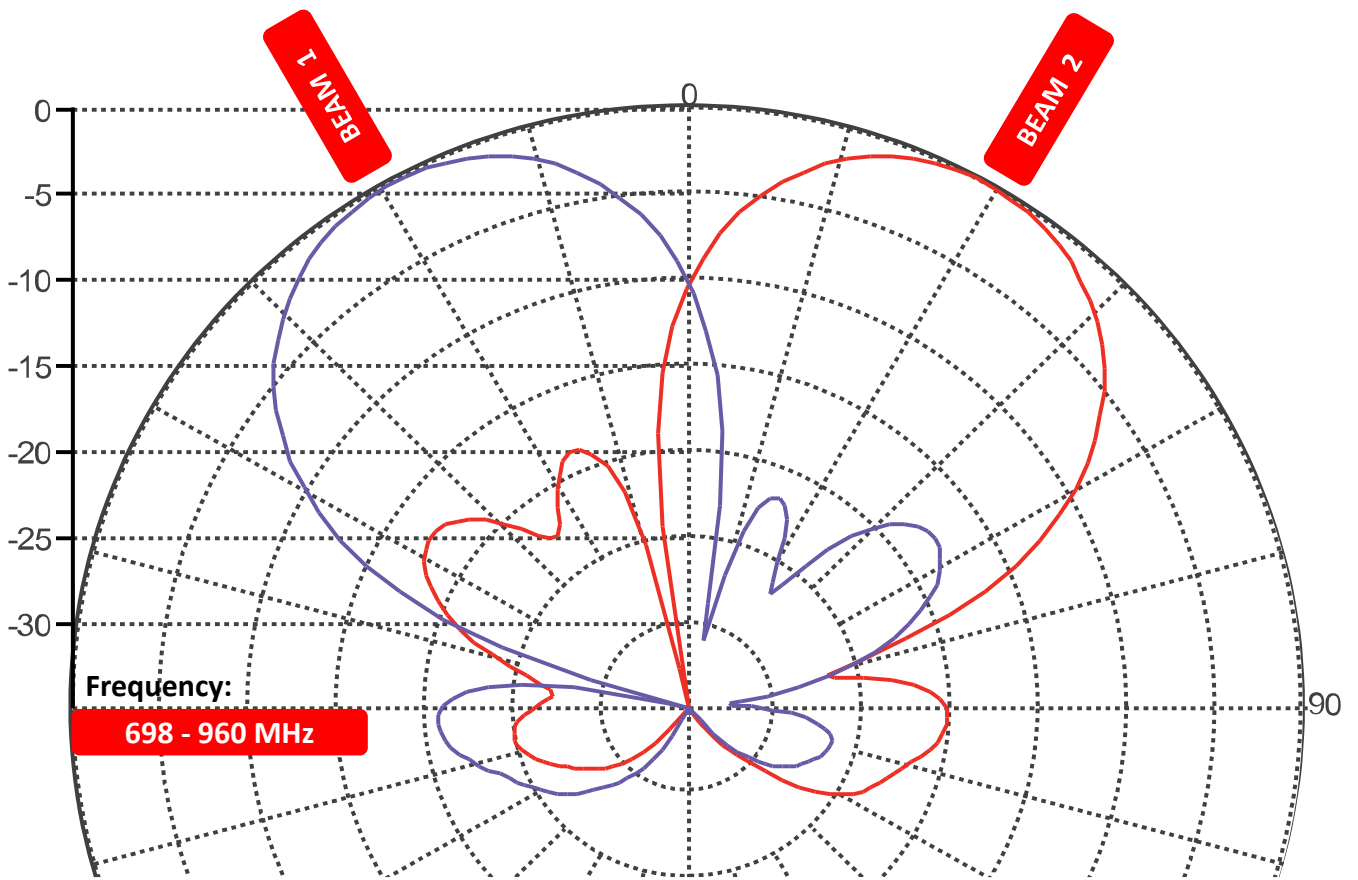
- 3.10 Bolts and nuts / Tools
  - 3.11 Bolts and nuts
  - 3.12 Bracket
- 3.20 Tools requirement
  - 3.21 Adjustable spanner
  - 3.22 M12 spanner
- 3.30 Bracket spacing and installation sample

Revision History:

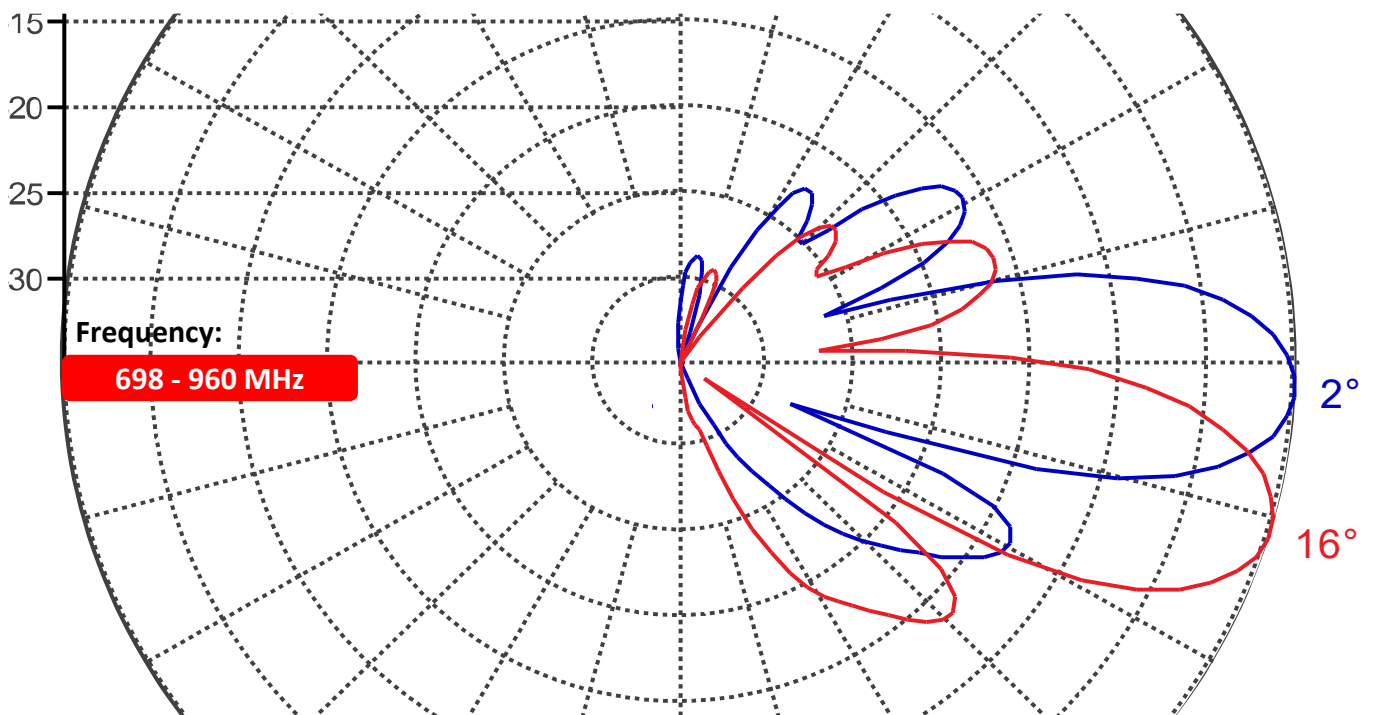
<u>Date</u>	<u>Description</u>	<u>Rev By</u>	<u>Check By</u>	<u>Rev no</u>
04-Nov-2024	Initial Release	RL	Pavel	0

# 1.00 Pattern diagram

## 1.10 Horizontal pattern

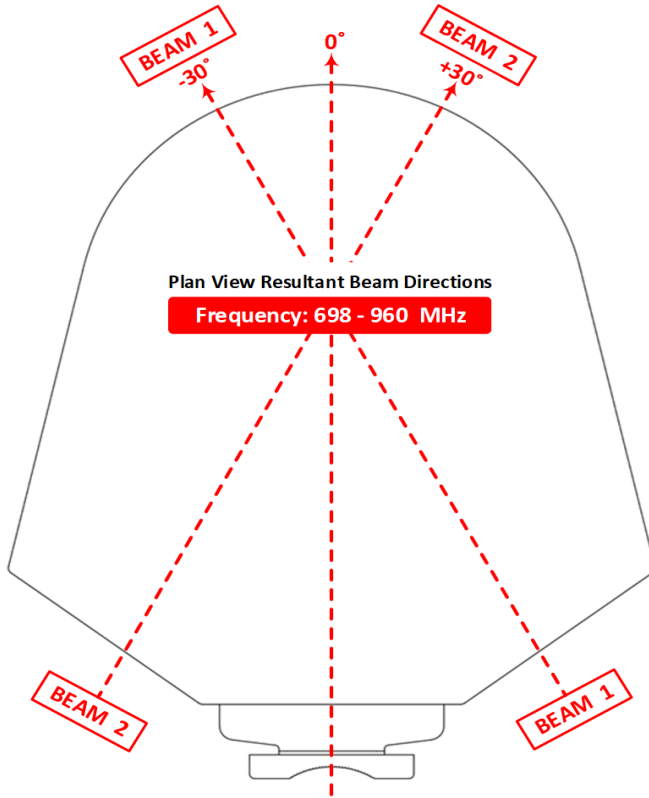


## 1.20 Vertical pattern



## 2.00 Beams and connectors

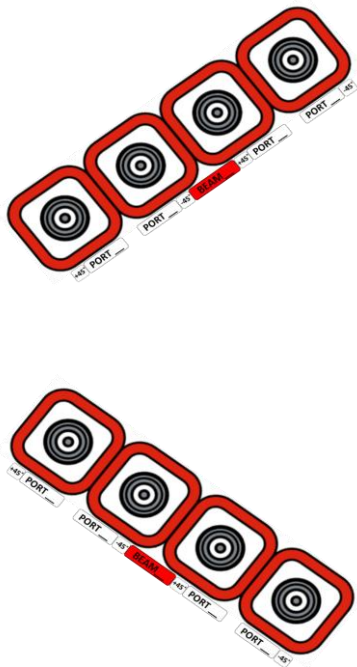
### 2.10 Plan view resultant beam layout



### 2.20 Connector port table

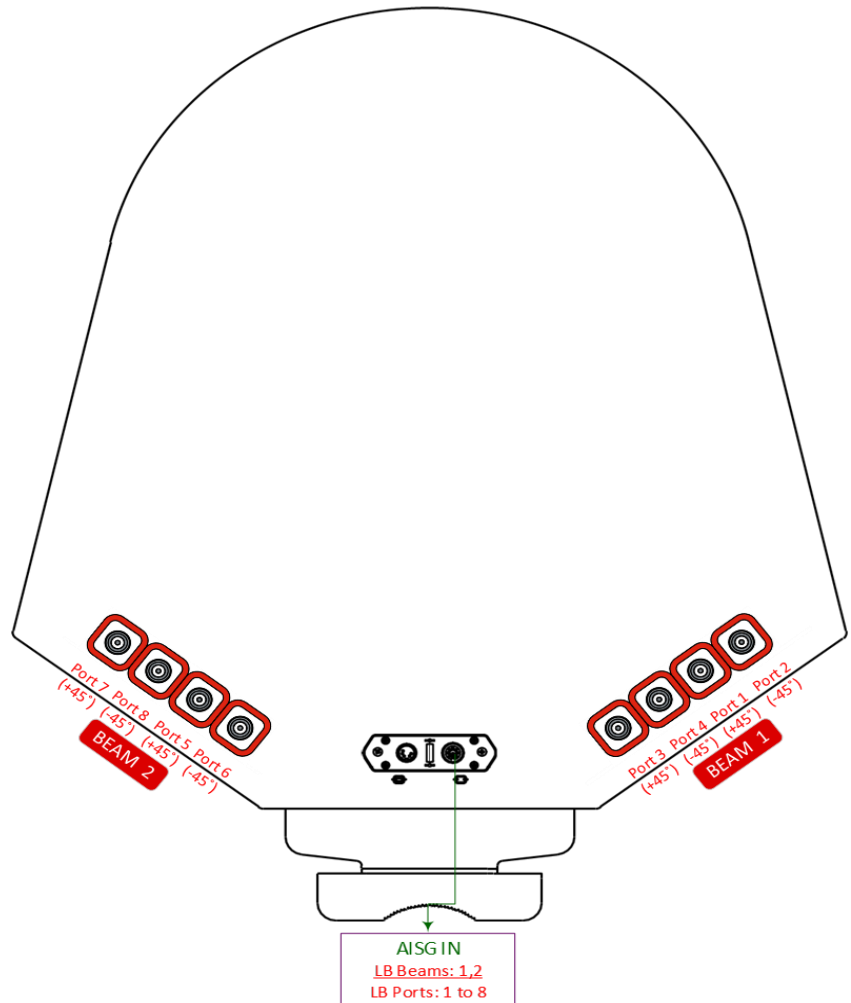
BEAM 2				BEAM 1			
Port 7 (+45°)	Port 8 (-45°)	Port 5 (+45°)	Port 6 (-45°)	Port 3 (+45°)	Port 4 (-45°)	Port 1 (+45°)	Port 2 (-45°)

### 2.30 Connector detail



### 2.40 Connector layout

MS-MBC-2-L4-15  
PLAN VIEW CONNECTOR LAYOUT



### 3.00 Bracket installation

3.10 Bolts and nuts / Tools

3.11 Bolts and nuts

Bracket Qty	Bolts		Nuts	
	Size	Qty	size	Qty
2	M12 x 200mm	4	M12	10



3.12 Bracket



3.20 Tools requirement

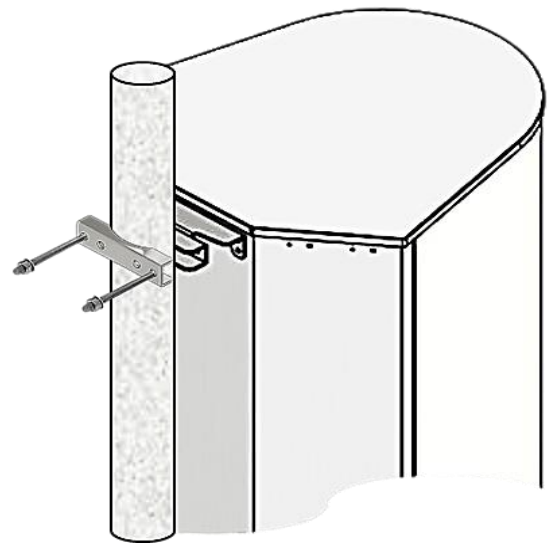
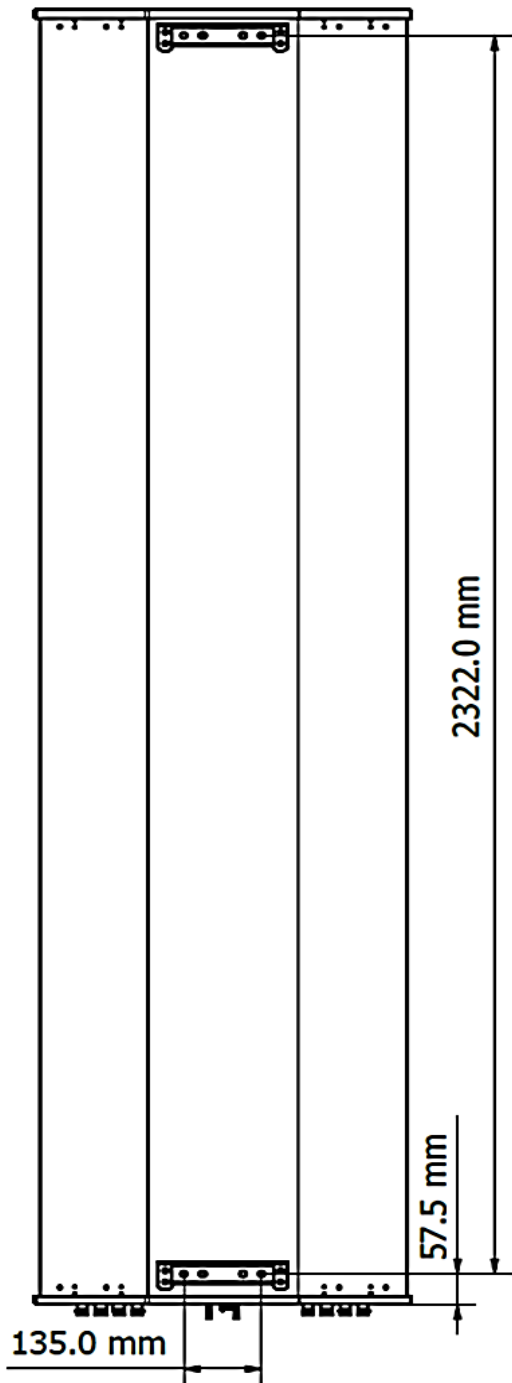
3.21 Adjustable spanner



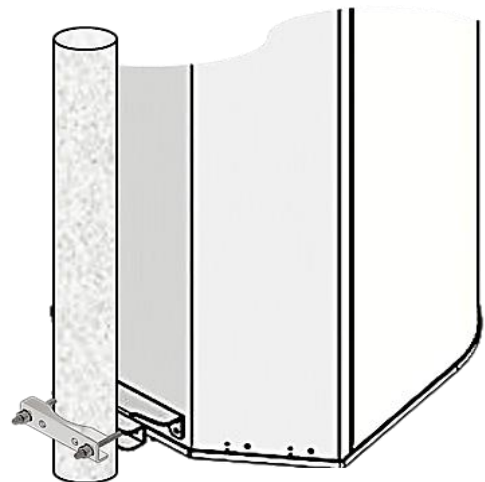
3.22 M12 spanner



3.30 Bracket spacing and installation sample



*Before installation*



*After installation*