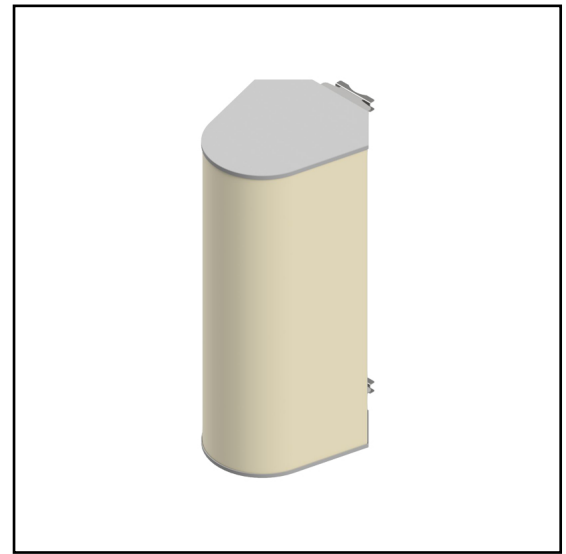


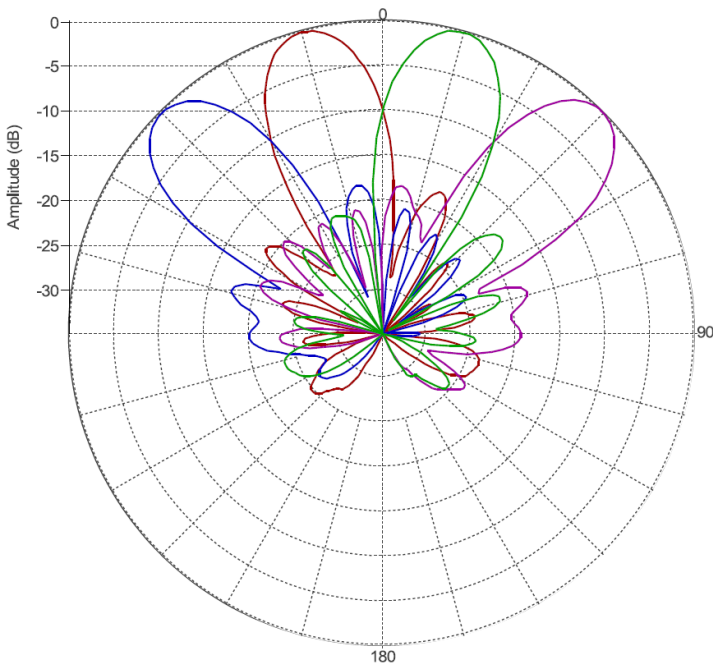
MS-MBC-4-H4-12

Multi-Beam Cylindrical Base-Station Lens Antenna;
Four isolated high frequency (1695-2690 MHz) cross-polarized
beams. Each beam has four ports to support 4x4 MIMO.
RET (Smart Bias Tee & AISG 2.0) with 2-15° for each beam.

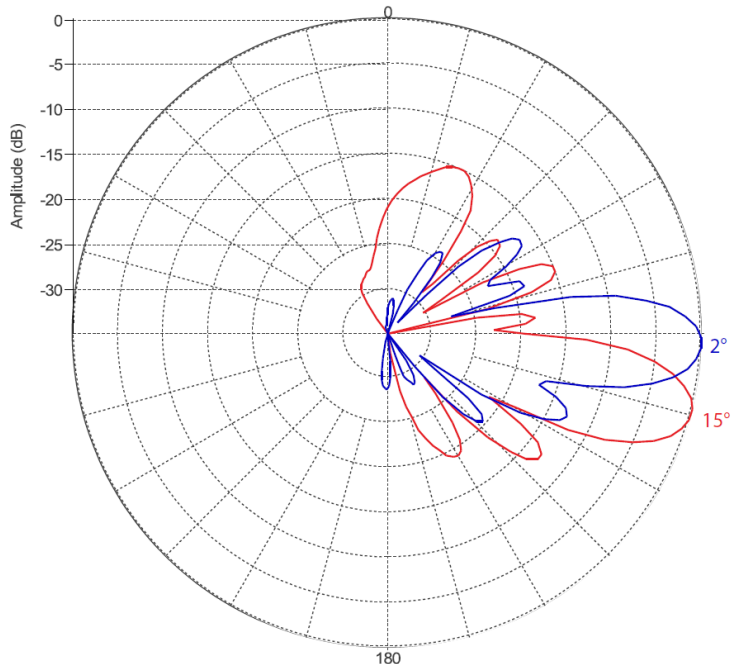


PATTERN RESULTS:

High-Band Horizontal Pattern (1.80GHz)



Vertical pattern at 2° tilt and 15° tilt (1.80GHz)



TECHNICAL SPECIFICATIONS

Frequency	1695 - 2690 MHz
Gain	20.5dBi
VSWR	<1.5:1
Polarization	Dual Slant $\pm 45^\circ$
Horizontal Coverage	120°
Horizontal Beamwidth (3dB level)	18°
Horizontal Beamwidth (10dB level)	30°
Vertical Beamwidth (3dB)	12.5°
Beam Cross-over	10dB typical
Total Number of Beams	4
Number of Ports per Beam	4
Number of Ports Total	16
RET	2° to 15°
First Upper Sidelobe level	< -15dB
Azimuth Sidelobe level	< -15dB
Front to Back Ratio	>28dB
Isolation Port to Port - Polarization	28dB
Isolation Port to Port - Beam	25dB
Power Rating	200W per port
Intermodulation	<-153dBc
Impedance	50 ohm
Connector Quantity and Type	16 x 4.3-10 female

MECHANICAL DATA

Dimensions (H x W x D)	129 x 54.6 x 66.5 cm 50.8 x 21.5 x 26.2 inch
Antenna Weight	38.9 kg 85.7 lbs
Radome Material	Fiber Glass
Mounting	2 position pipe mount Compatible pipe diameter: 6.1 – 11.4 cm 2.4 – 4.5 inch

ENVIRONMENTAL RATINGS

Humidity	95% RH @ +30°C
Temperature	-40°C to +70°C
Wind load @ 150km/h	TBD

CONNECTOR LAYOUT:

