

MATSING[®]

LENS TECHNOLOGY ENABLED

MS-MBC-4.2-H4-8-T4-16

Instruction Manual

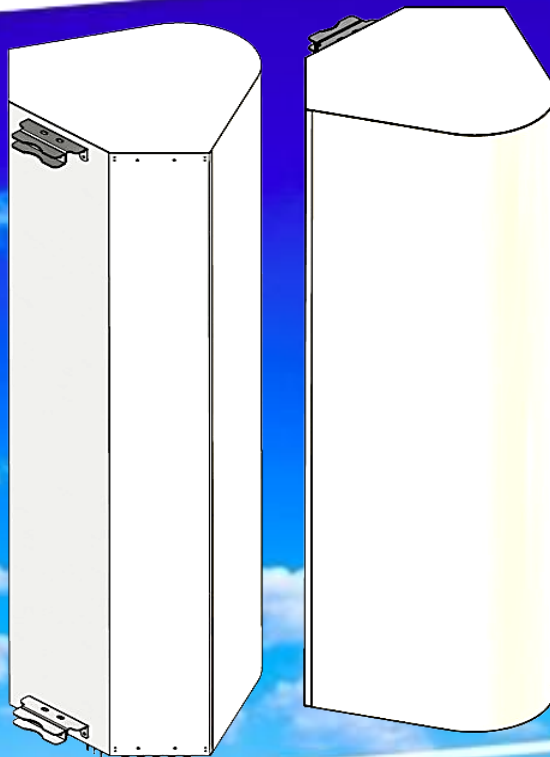


Table of Contents

1.00 Pattern diagram

- 1.10 High band
 - 1.11 Horizontal pattern
 - 1.12 Vertical pattern
- 1.20 T - band
 - 1.21 Horizontal pattern
 - 1.22 Vertical pattern

2.00 Beams and connectors

- 2.10 Plan view resultant beam layout
- 2.20 Connector port table
- 2.30 Connector detail
- 2.40 Connector layout

3.00 Bracket installation

- 3.10 Bolts and nuts / tools
 - 3.11 Bolt and nuts set
 - 3.12 Bracket
- 3.20 Tools requirement
- 3.30 Bracket spacing and installation sample

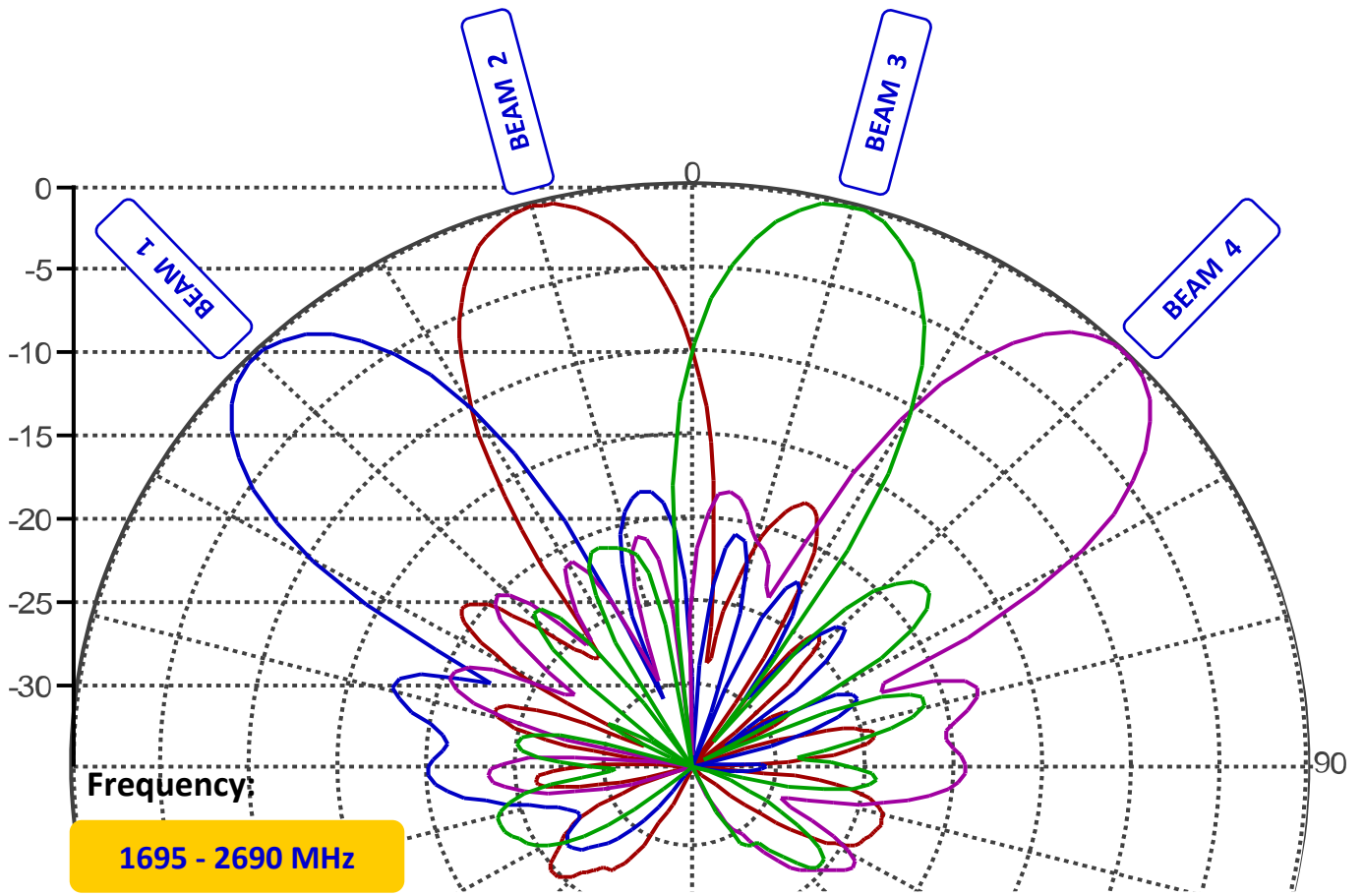
Revision History:

<u>Date</u>	<u>Description</u>	<u>Rev By</u>	<u>Check By</u>	<u>Rev no</u>
13-Mar-2025	Initial Release	RL	Pavel	0

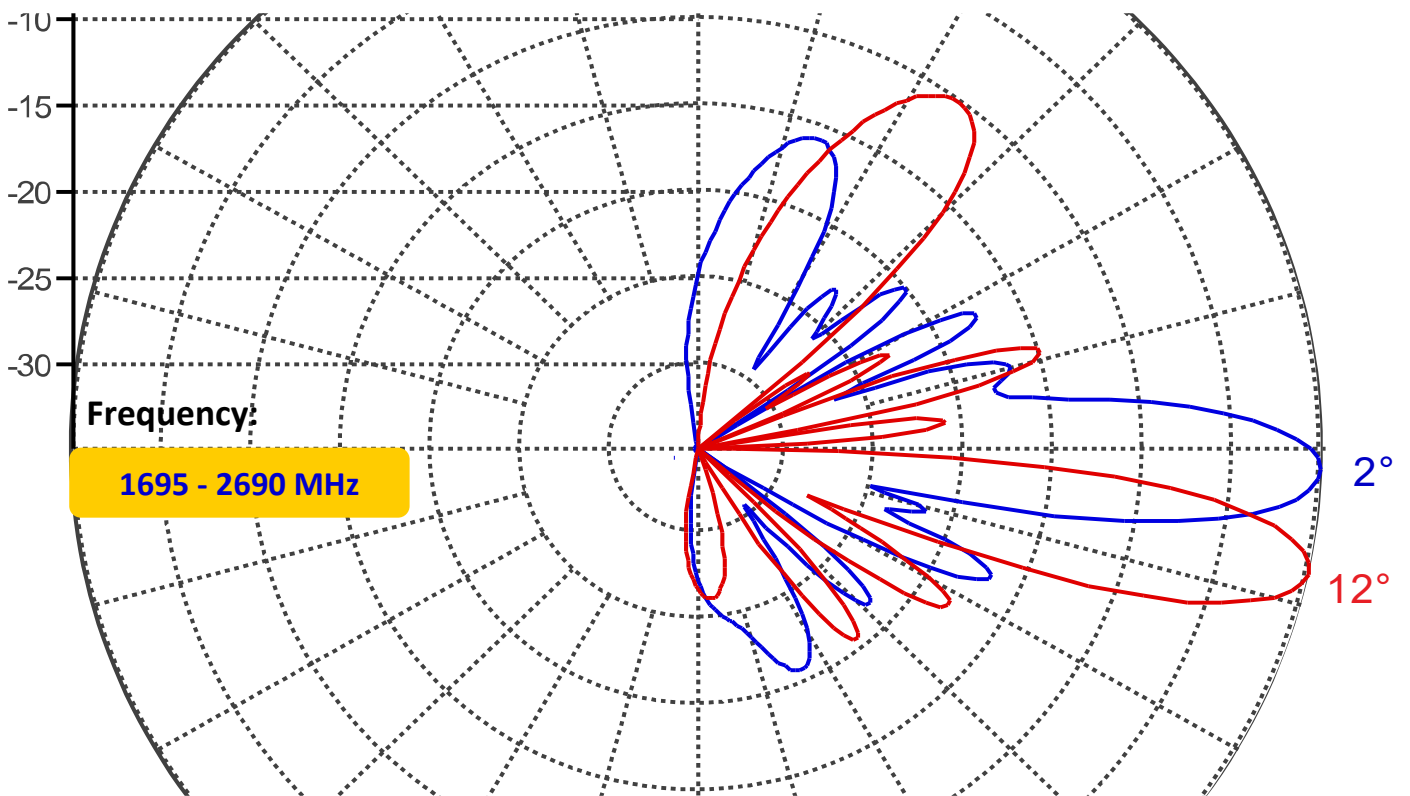
1.00 Pattern diagram

1.10 High band

1.11 Horizontal pattern

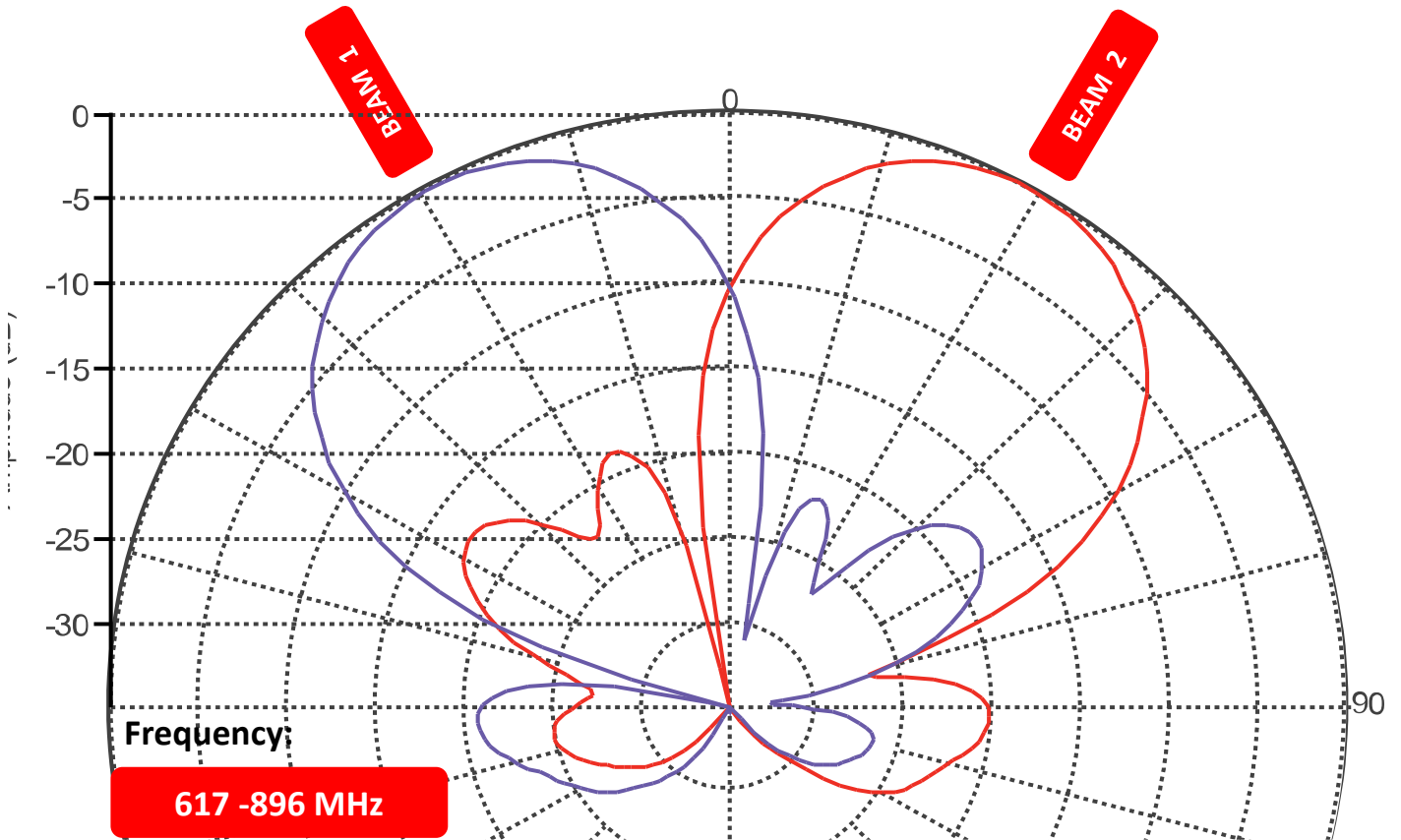


1.12 Vertical pattern

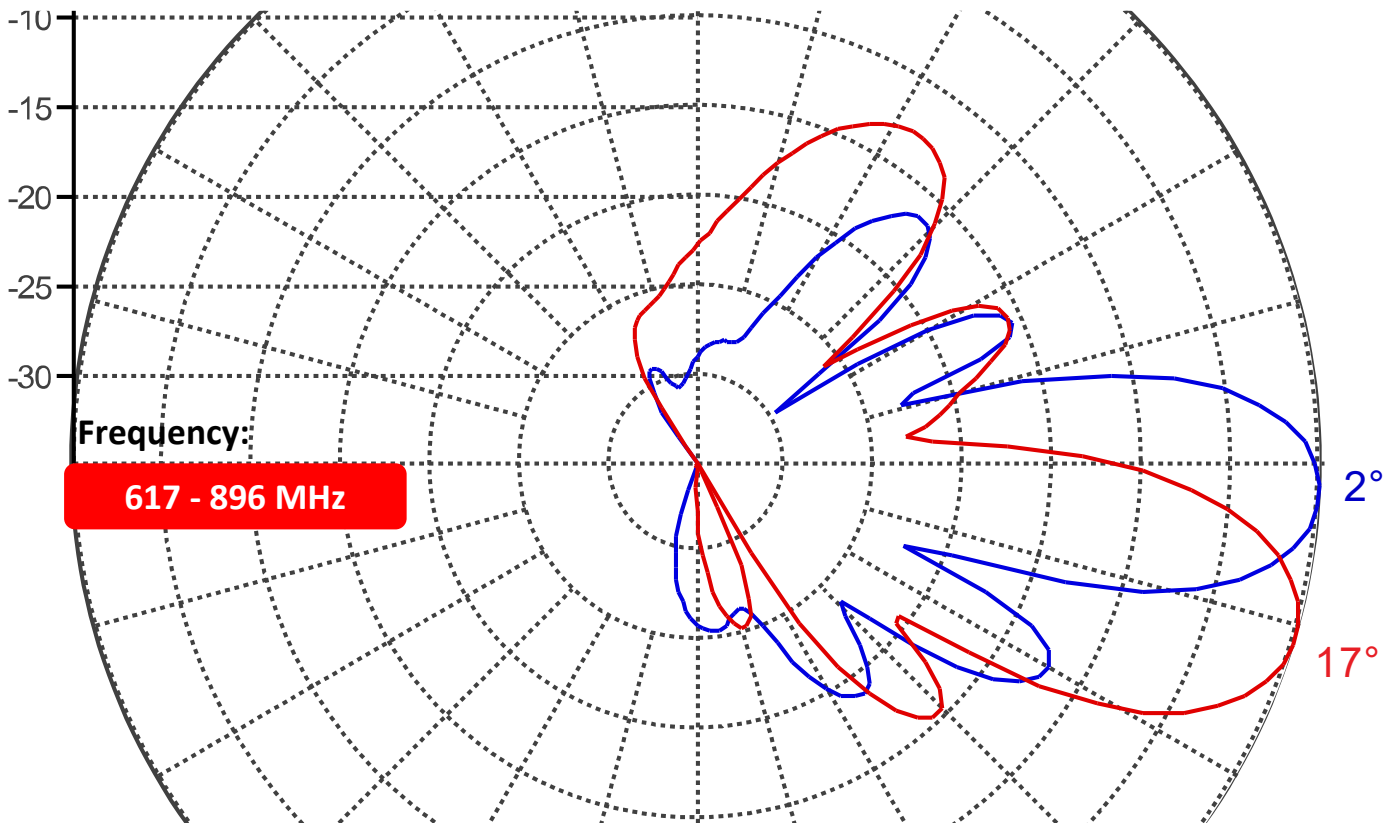


1.20 T - band

1.21 Horizontal pattern

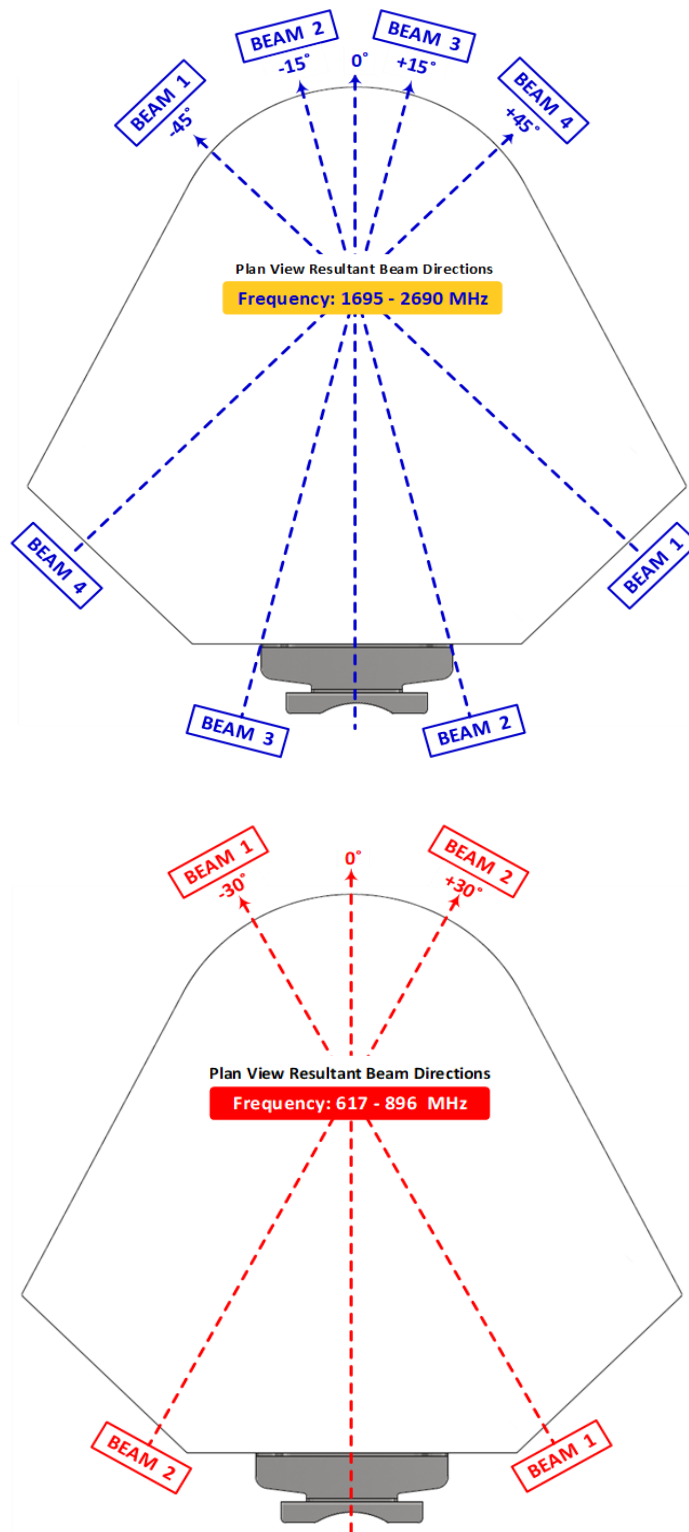


1.22 Vertical pattern



2.00 Beams and connectors

2.10 Plan view resultant beam layout

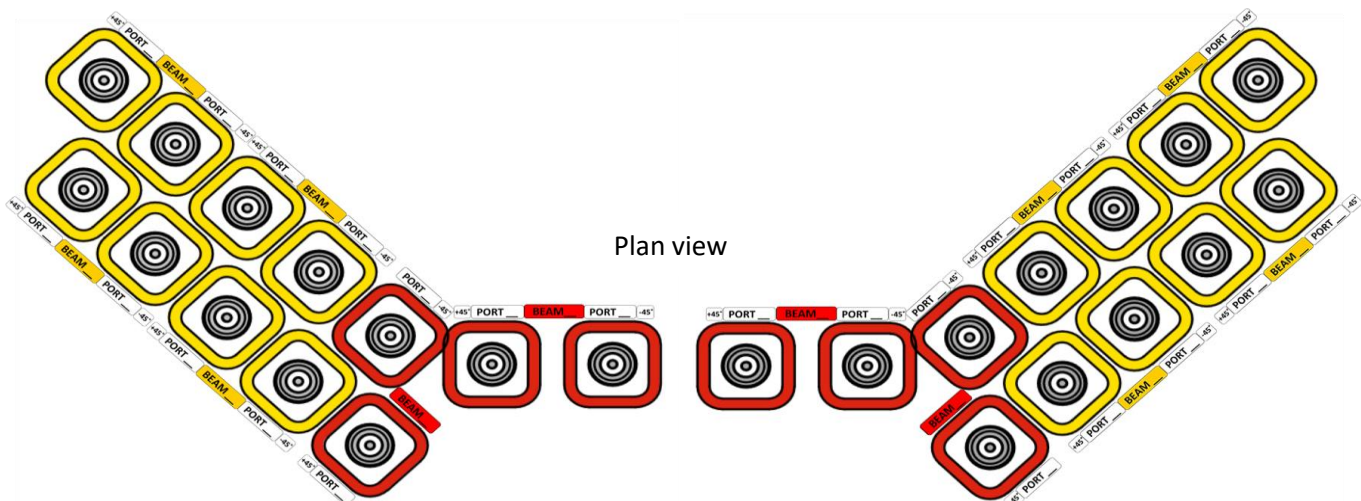


2.20 Connector port table

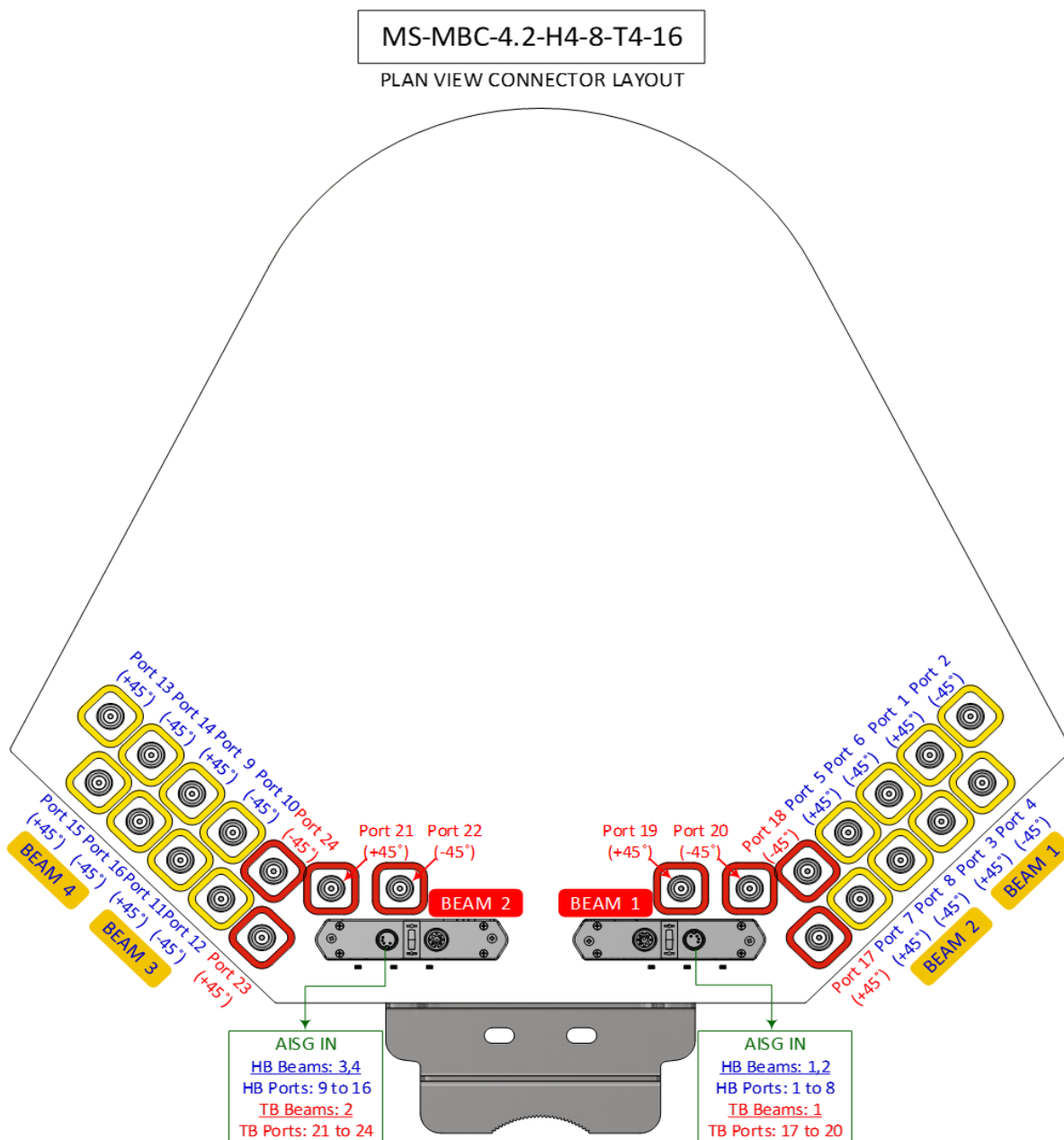
BEAM 4		BEAM 3		BEAM 2		
Port 13 (+45°)	Port 14 (-45°)	Port 9 (+45°)	Port 10 (-45°)	Port 24 (-45°)	Port 21 (+45°)	Port 22 (-45°)
Port 15 (+45°)	Port 16 (-45°)	Port 11 (+45°)	Port 12 (-45°)	Port 23 (+45°)		

BEAM 1			BEAM 2		BEAM 1	
Port 19 (+45°)	Port 20 (-45°)	Port 18 (-45°)	Port 5 (+45°)	Port 6 (-45°)	Port 1 (+45°)	Port 2 (-45°)
		Port 17 (+45°)	Port 7 (+45°)	Port 8 (-45°)	Port 3 (+45°)	Port 4 (-45°)

2.30 Connector detail



2.40 Connector layout



3.00 Bracket installation

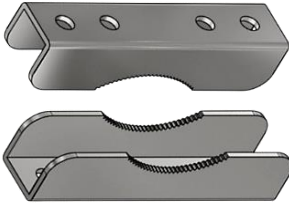
3.10 Bolts and nuts / tools

3.11 Bolt and nuts set



Bracket	Bolts		Nuts	
Qty	Size	Qty	Size	Qty
2	M12 x 200mm	4	M12	10

3.12 Bracket



3.20 Tools requirement

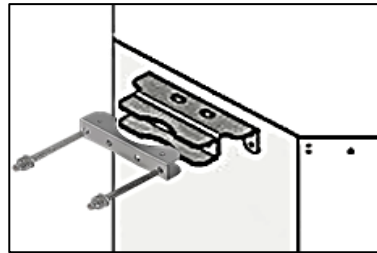
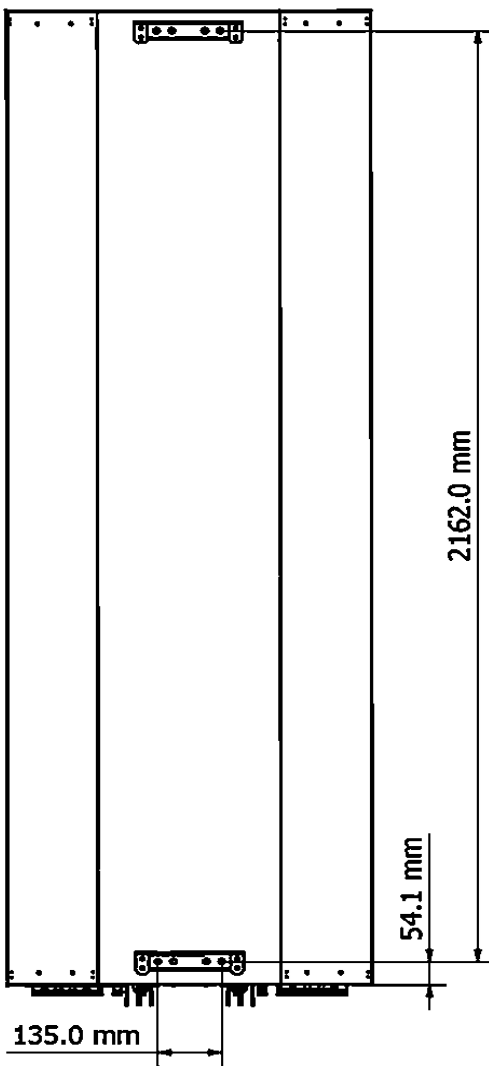
Adjustable spanner



M12 spanner



3.30 Bracket spacing and installation sample



Before installation

