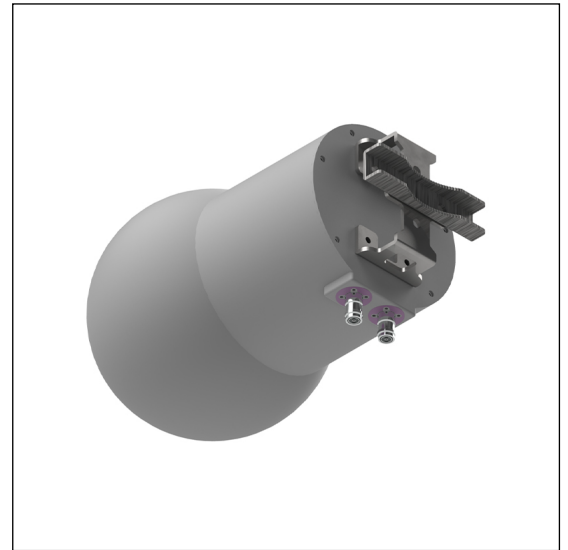


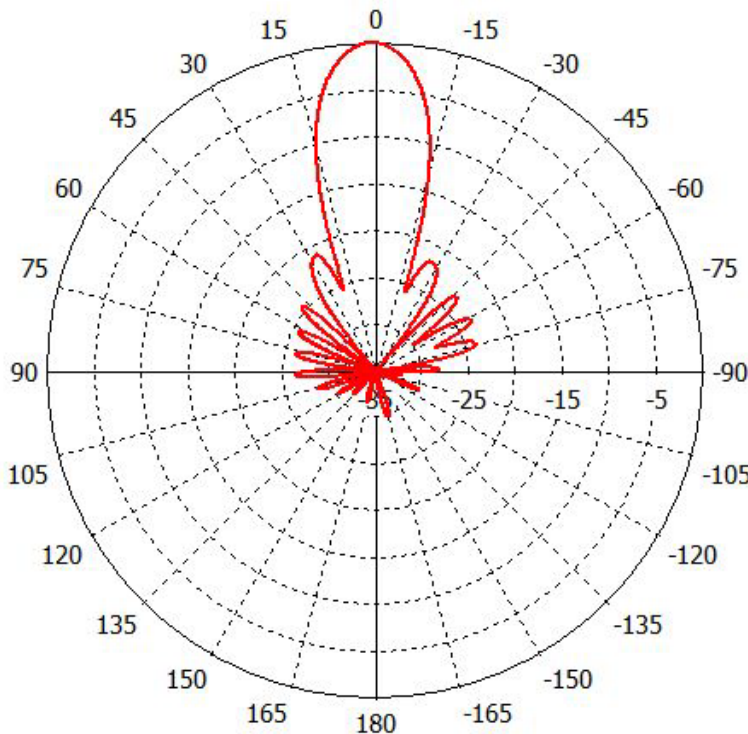
## MS-SB17-C

**Lens Technology Enabled™ Base-Station Antenna perfect for stadium applications, utilizes a patented spherical lens design with 1 C-Band Frequency (3700- 4200 MHz) cross-polarized beam. Beam has 2 cross-polarized ports for supporting 2X2 MIMO and low sidelobes levels.**

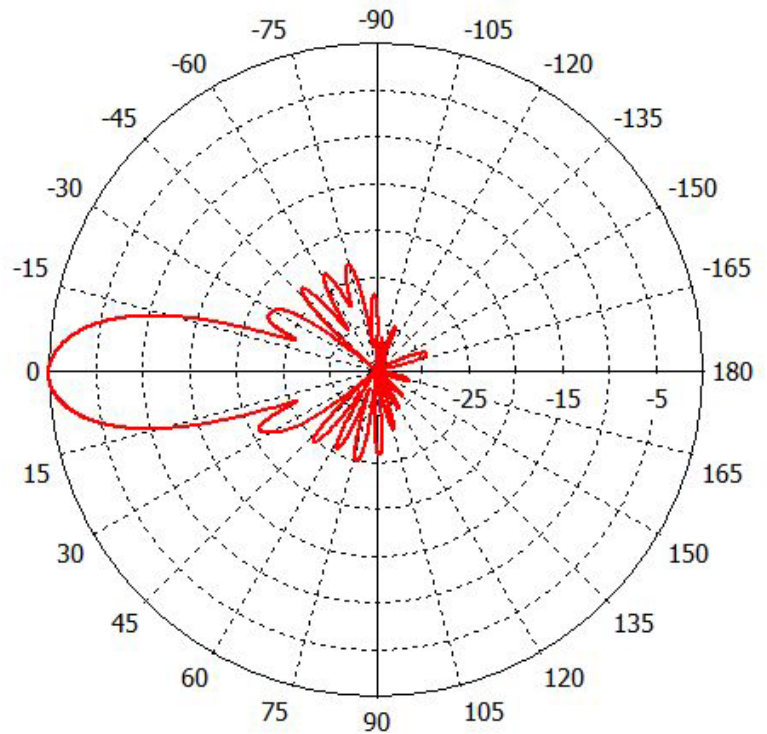


### PATTERN RESULTS:

**Horizontal Pattern (3.7GHz)**



**Vertical Pattern (3.7GHz)**



### TECHNICAL SPECIFICATIONS

|                                       |                           |
|---------------------------------------|---------------------------|
| Frequency                             | 3700– 4200 MHz            |
| Gain                                  | 20dBi                     |
| VSWR                                  | <1.5:1                    |
| Polarization                          | Dual Slant $\pm 45^\circ$ |
| Horizontal Coverage                   | 30°                       |
| Horizontal Beamwidth (3dB)            | 17°                       |
| Vertical Beamwidth (3dB)              | 17°                       |
| Total Number of Beams                 | 1                         |
| Number of Ports per Beam              | 2                         |
| First Sidelobe level                  | <-19dB                    |
| Front to Back Ratio                   | >28dB                     |
| Isolation Port to Port - Polarization | >28dB                     |
| Power Rating                          | 150W per port             |
| Intermodulation                       | <-153dBc                  |
| Impedance                             | 50 ohm                    |
| Connector Quantity and Type           | 2 x 4.3-10 female         |

### MECHANICAL DATA

|                        |  |
|------------------------|--|
| Dimensions (H x W x D) | 27.4 x 27.4 x 45.9 cm<br>10.8 x 10.8 x 18.1 inch |
| Antenna Weight         | 3.5 kg<br>7.7 lbs                                |
| Radome Material        | Polycarbonate                                    |
| Mounting               | TBD  |

### ENVIRONMENTAL RATINGS

|                       |  |
|-----------------------|--|
| Humidity              | 95% RH @ +30°C                                     |
| Temperature           | -40°C to +70°C                                     |
| Wind load @ 160 km/hr | N/lbf<br>Frontal : 25.7/5.8<br>Lateral: 57.6/12.96 |

### CONNECTOR LAYOUT:

