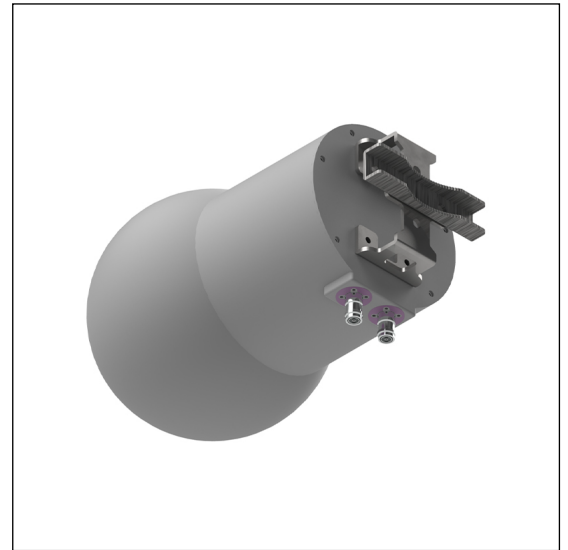


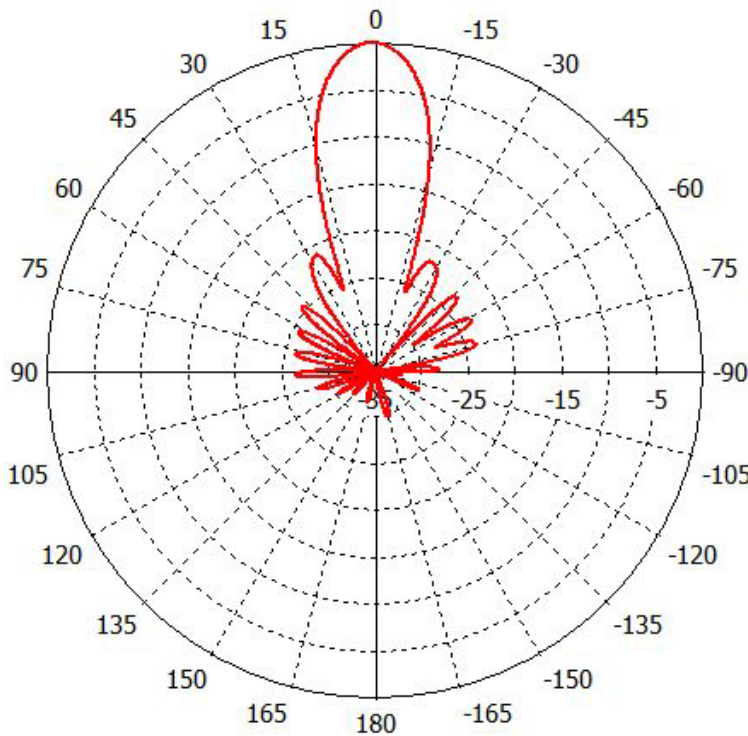
MS-SB17-C

Lens Technology Enabled™ Base-Station Antenna perfect for stadium applications, utilizes a patented spherical lens design with 1 isolated high-frequency (1710-2690MHz) cross-polarized beam. Beam has 2 cross-polarized ports for supporting 2X2 MIMO and low side-lobes.

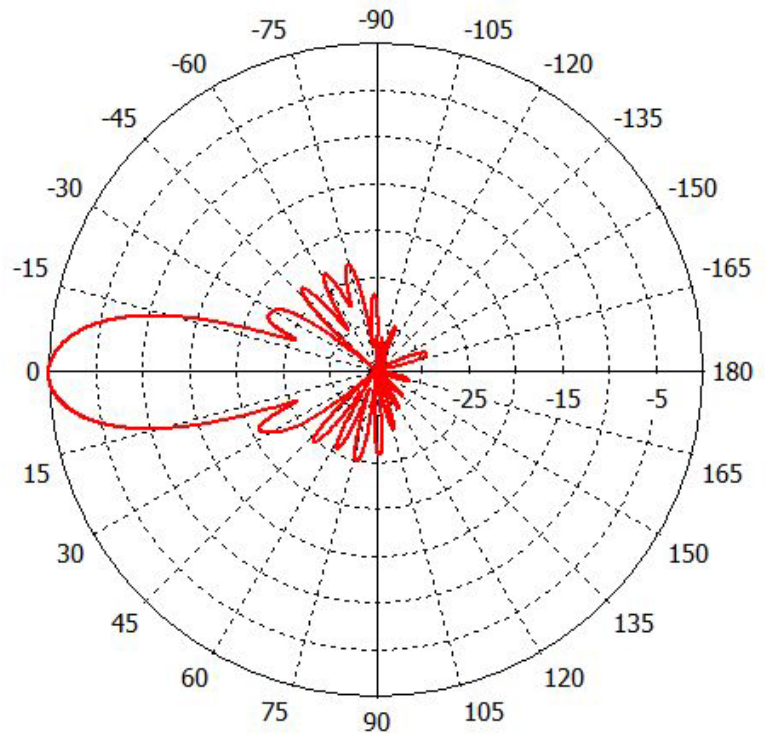


PATTERN RESULTS:

Horizontal Pattern (3.7GHz)



Vertical Pattern (3.7GHz)



TECHNICAL SPECIFICATIONS

Frequency	3700– 4200 MHz
Gain	20dBi
VSWR	<1.5:1
Polarization	Dual Slant $\pm 45^\circ$
Horizontal Coverage	30°
Horizontal Beamwidth (3dB)	17°
Vertical Beamwidth (3dB)	17°
Total Number of Beams	1
Number of Ports per Beam	2
First Sidelobe level	<-19dB
Front to Back Ratio	>28dB
Isolation Port to Port - Polarization	>28dB
Power Rating	150W per port
Intermodulation	<-153dBc
Impedance	50 ohm
Connector Quantity and Type	2 x 4.3-10 female

MECHANICAL DATA

Dimensions (H x W x D)	27.4 x 27.4 x 45.9 cm 10.8 x 10.8 x 18.1 inch
Antenna Weight	3.5 kg 7.7 lbs
Radome Material	Polycarbonate
Mounting	TBD

ENVIRONMENTAL RATINGS

Humidity	95% RH @ +30°C
Temperature	-40°C to +70°C
Wind load @ 160 km/hr	N/lbf Frontal : 25.7/5.8 Lateral: 57.6/12.96

CONNECTOR LAYOUT:

